



Parks and Recreation



Memorial Program



Create a Lasting Way to Commemorate a Beautiful Occasion or honor and remember a loved one

MEMORIAL TREE AND BENCH PROGRAM



Memorial Trees and Benches will be a living remembrance that will also benefit the community for many years to come. If you would like to commemorate a date, person, event or organization, you can arrange to have a tree or bench placed in your favorite Dover Area Park.

*Give the gift of green and shade
or a place to stop and rest*

Trees



\$250 w/ Plaque
\$200 w/ No Plaque

Tree Memorial is dependent upon which park you pick. Please see next pages for details. Tree plaque dimensions are 6"x 8" and can have up to 5 lines of engraving.

Benches



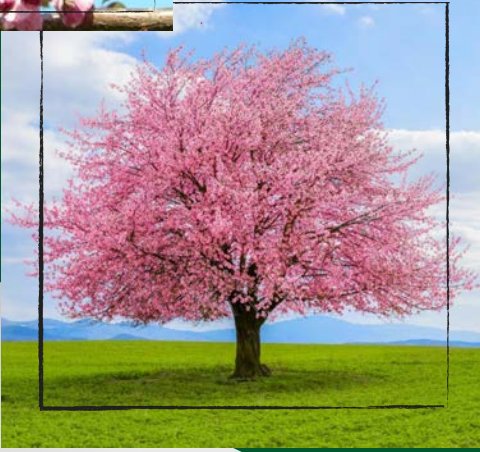
\$1500 Brookside/Lehr
\$2900 Eagle View

Benches are dependent upon which park you pick. Benches are 6 feet long. Please see the pages describing details of the benches. Bench engraving dimensions for Lehr and Brookside are 38 characters on one board. Bench engraving dimensions for Eagle View are 2"x 10" with up to 4 lines at 56 characters/line.

If interested in our Memorial Program please contact Chalet Harris at charris@dovertownship.org or Judd Wolfe at jwolfe@dovertownship.org

Eagle View Park Tree Options

Kwanzan Flowering Cherry



- Prolific Double Pink Blooms Burst into Display in Early Spring
- Foliage is Dark Shiny Green in Summer and Reddish-Copper in Fall
- Upright, Vase Shaped Growth Habit with an Ultimate Height and Spread of 20'-25'

Purple Leaf Plum 'Thundercloud'



- Purple Foliage all Summer long with light pink single blooms in Spring
- Matures to 15'-20' height and 12'-15' spread



Lehr Park Tree Options

Red Pointe Maple



- Brilliant red fall color plus an upright, broadly pyramidal form make this maple a standout
- Straight dominate central leader results in strong branching angles, increasing trees' durability to storm damage
- Grows to 45' high and 25'-30' wide

Crimson Sunset Maple

- Heat Tolerance is the distinguishing characteristic of this maple
- Its foliage resembles that of crimson king, with rich dark purple throughout the summer, turning maroon to red-bronze in fall
- Compact, upright to oval form to 25'-35' with a 20'-25' spread



Brookside Park Tree Options

Autumn Brilliance Serviceberry



- A spectacular show of fragrant snowy white flowers in early spring
- Multi stemmed to 15'-25' height and 15' spread
- Young leaves emerge purple eventually turning to blue-green in summer and finally red, orange, and yellow in fall
- Small, sweet edible fruits, a favorite of birds, ripen in June
- Use as a specimen or in clusters, this easy to grow native provides three seasons of interest and makes an excellent screening tree

Red Pointe Maple



- Brilliant red fall color plus an upright, broadly pyramidal form make this maple a standout
- Straight dominate central leader results in strong branching angles, increasing trees' durability to storm damage
- Grows to 45' high and 25'-30' wide

Bench Options



Lehr
Park

Brookside
Park



Eagle
View
Park



BUY A BRICK

**Want to become a part of history?
Buy a Brick to help the Dover Township
Recreation Department**

Dover Township Recreation is selling engraved bricks to be placed in the patio that is connected to the Carousel Building at Brookside Park: 4054 Fox Run Rd. Engraved bricks will replace blank bricks already in the patio. The bricks could be engraved with an "In Memory of", company name/your name, and special dates/events.

\$75 for 2 lines
\$100 for 3 lines



Contact jkroft@dovertownship.org or come into the Township Building for forms





Parks and Recreation

**If interested in our Memorial Program
please contact Chalet Harris at
charris@dovertownship.org or Judd
Wolfe at jwolfe@dovertownship.org or
call 717-292-3634**