

'R-3' ZONE
'C' ZONE
ZONING BOUNDARY (TYP.)

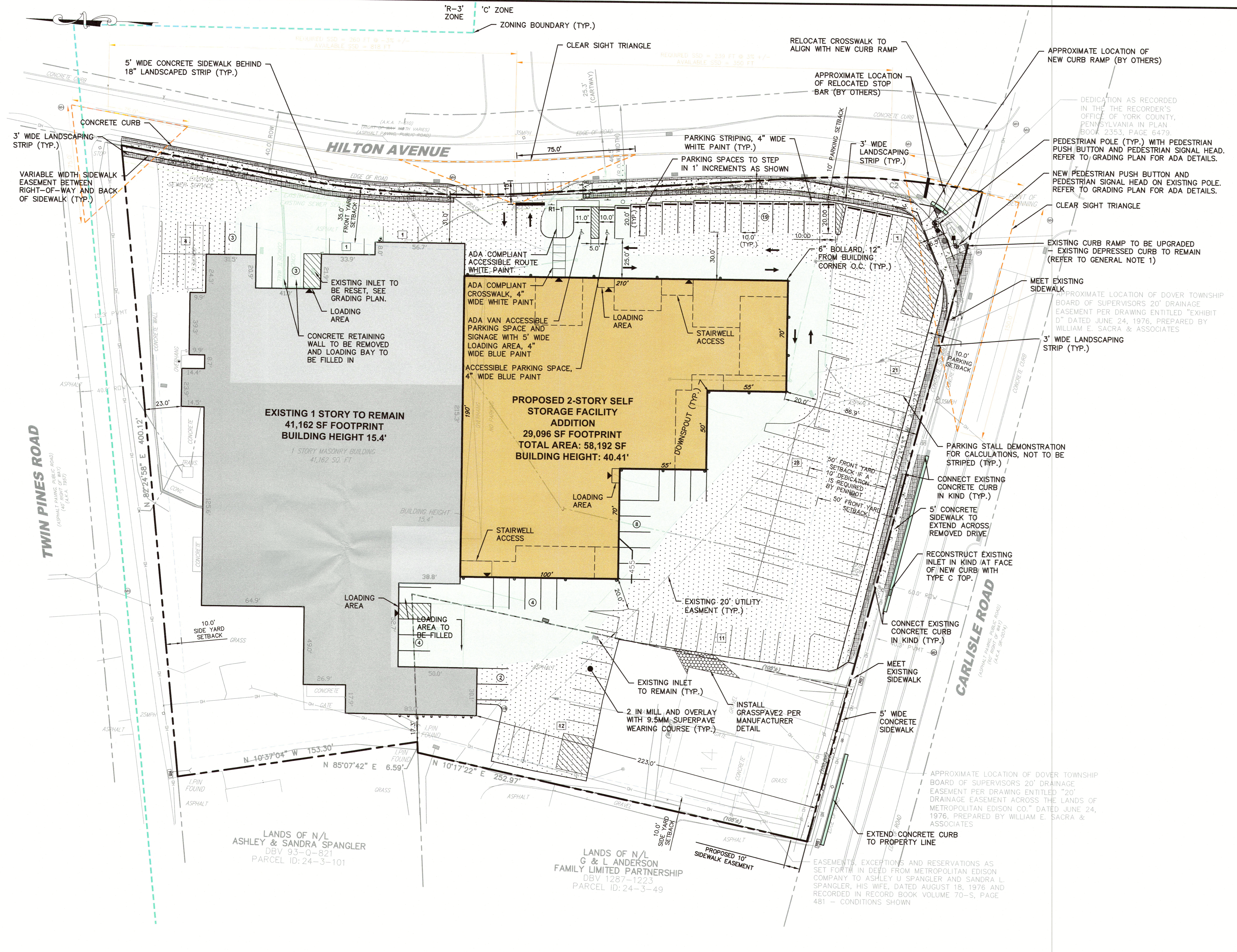
LEGEND: (EXISTING)

- PROPERTY LINE
- - - ADJACENT PROPERTY LINE
- - - DRAINAGE EASEMENT
- - - RIGHT OF WAY LINE
- ▭ BUILDING
- CONCRETE CURB
- DRAINAGE INLET
- MANHOLE
- HYDRANT
- OVERHEAD LINE

LEGEND: (PROPOSED)

- BUILDING SETBACK LINE
- - - PARKING SETBACK LINE
- △ CLEAR SIGHT TRIANGLE
- ▭ BUILDING
- ▭ FULL DEPTH PAVEMENT
- ▭ 2" MILL AND OVERLAY
- ▭ LANDSCAPE STRIP
- ▭ CONCRETE SIDEWALK
- ▭ GRASSPAVE2 UNITS
- ▭ DETECTABLE WARNING SURFACE
- ▭ TRAFFIC SIGN
- ▭ STORM SEWER INLET
- MANHOLE
- DOWNSPOUT
- FIRE HYDRANT
- ▭ PROPOSED DOOR
- ▭ WHEEL STOP
- ▭ ADA ACCESSIBLE PARKING SPACE, SYMBOL, AND SIGNAGE
- ▭ STRIPED PARKING SPACE AND STRIPED PARKING SPACE COUNT
- ▭ NON-STRIPED PARKING SPACE AND NON-STRIPED PARKING SPACE COUNT

TOTAL PARKING SPACE COUNT: 122 SPACES

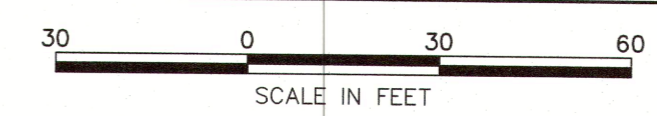


CURVE	RADIUS	ARC LENGTH	CHORD LENGTH	CHORD BEARING	DELTA ANGLE
C1	662.74'	163.86'	163.44'	S01°18'31"W	14°09'57"
C2	460.38'	188.77'	188.44'	S01°36'58"W	14°46'52"

GENERAL NOTES:

- RAMP, SIDEWALKS AND CROSSWALKS TO REMAIN WITHIN THE INTERSECTION SHALL BE REVIEWED AND UPGRADED AS APPLICABLE BY DOVER TOWNSHIP AND PENNDOT.

No.	Date	Revision	Revised By	Checked By
9	01/19/2024	REVISED PER PENNDOT COLLABORATION MEETING	SP	LB
8	11/15/2023	REVISED PER TOWNSHIP AND PUBLIC WORKS COMMENTS	SP	LB
7	10/10/2023	REVISED PER TOWN AND YCCD COMMENTS	SP	LB
6	9/8/2023	REVISED PER PUBLIC WORKS COMMENTS	LB	LB
5	9/5/2023	REVISED PER TOWN AND FIRE DEPARTMENT COMMENTS	KN	LB
4	8/15/2023	REVISED PER PLANNING COMMISSION COMMENTS	SP	LB
3	7/26/2023	REVISED PER TOWNSHIP COMMENTS	CE	LB
2	5/26/2023	REVISED FOR LAND DEVELOPMENT RESUBMISSION	KN	LB
1	4/10/2023	PER DOVER TOWNSHIP PLANNING COMMISSION COMMENTS	CPE	LB



FPA FRENCH & PARELLO ASSOCIATES

Corporate Office:
1600 Rte 34, Suite 101
Wall, New Jersey 07719
732.312.9800

Wayne, NJ
New York, NY
Pennsylvania, PA
Georgia, GA

WAYNE INGRAM, PE
PROFESSIONAL ENGINEER, PA LIC NO PE80169

LAYOUT AND DIMENSION PLAN FOR PRELIMINARY / FINAL MAJOR LAND DEVELOPMENT PLAN FOR MOOVE IN SELF STORAGE 3025 CARLISLE ROAD

PARCEL ID: 240003004700

DOVER TOWNSHIP
YORK COUNTY, PA

DATE: 2/17/2023	DESIGNED BY: CFE	SCALE: 1" = 30'	PROJECT NUMBER: 19393.001
DRAWN BY: CFE	CHECKED BY: LBB	FIELD BOOK	SHEET: 3 of 13

COPYRIGHT © 2023, FRENCH & PARELLO ASSOCIATES - THE COPYING OR REUSE OF THIS DOCUMENT, OR PORTIONS THEREOF, WITHOUT THE WRITTEN PERMISSION OF FRENCH & PARELLO ASSOCIATES, PA IS PROHIBITED. DUE TO INHERENT ERRORS IN REPRODUCTION METHODS, ERRORS MAY OCCUR WHEN SCALING THIS DRAWING.