



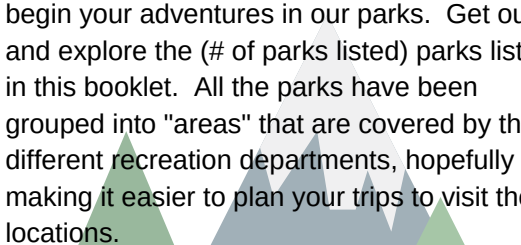
PARKS LOCATED IN

**DOVER TWP/BOROUGH , EASTERN YORK REC AUTHORITY,
SPRING GROVE REGIONAL REC, SPRINGGETTSBURY TWP,
WEST MANCHESTER TWP, YORK TWP**




Dear Park Explorer:

We are so excited you've decided to visit the beautiful parks and facilities of York Area Recreation Directors (YARD). With over 397 acres, there's something for everyone. Enjoy hiking, walking, biking, playgrounds, wildlife, unique buildings and so much more!

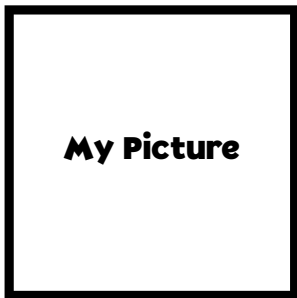


Use this passport booklet as your guide as you begin your adventures in our parks. Get out and explore the (# of parks listed) parks listed in this booklet. All the parks have been grouped into "areas" that are covered by the different recreation departments, hopefully making it easier to plan your trips to visit these locations.

Don't forget to look for all the unique items that are listed on each "checklist" and make sure to complete the challenge activities and coloring pages. But most importantly have fun enjoying nature and exploring the world around you!



Passport Holder Information



My Name:

Location:

My Favorite Parks:

1.

2.

3.

4.

5.



Dover Township/ Borough Parks

Brookside Park - 4054 Fox Run Rd: This park was created in 1901 as a “trolley park”. The park sits in a grove of mature trees with the Fox Run stream running through. Guests can enjoy basketball, sand volleyball, and a short walk will lead to a baseball field. There is also a playground at the park.

Dover Community Park - 2481 West Canal Rd: This park is home to two historic buildings. The Log House was moved to this location in 1983, piece by piece and reconstructed. The Dover Jail was moved from its original location in the Dover Borough. Be sure to read the plaque about the interesting history regarding the jail. Two bridges cross the stream that flows through the park.

Lehr Park - 3700 Davidsburg Rd: This park offers baseball and soccer fields and a popular 1/2 mile walking trail. There is a playground to the rear of the Community Building.

Edgewood Park - 5001 Nittany Dr: This park is in the Salem Run development. There is a playground and two small baseball fields.

Mayfield Park - Sedgewick Ave: This park is bordered by the Little Conewago Creek. There is a lighted football field and a playground.

Ketterman Park - Edgeway Rd: This park is located in the borough of Dover with a 1/2 mile walking track. There is an old blacksmith's shop located here as well as two baseball fields and a basketball court. There are also two small playgrounds.

Dover Checklist:

-  **A Round Building**
-  **An Old Jail**
-  **A Blacksmith Shop**
-  **Trolley Trail**
-  **A Library**

"WE DON'T STOP PLAYING BECAUSE WE GROW OLD. WE GROW OLD BECAUSE WE STOP PLAYING."

— GEORGE BERNARD SHAW

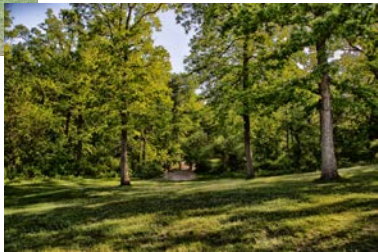
**For a map of Dover
Twp/Borough Parks
scan the QR
code**



Which Park?

Dover Township/Borough

Activity: Take a picture of your own to add to your booklet...



Dover's Challenge Activity

Birdwatching is a great way to study nature in the backyard, local, national, and state parks, and nature reserves. For this challenge look at the pictures below and spend time finding the backyard birds of Pennsylvania.



Red-winged Blackbird

☐ _____

Blue Jay

☐ _____

Red-bellied Woodpecker

☐ _____

Song Sparrow

☐ _____

American Robin

☐ _____

Downy Woodpecker

☐ _____

American Crow

☐ _____

Mourning Dove

☐ _____

Gray Catbird

☐ _____

House Sparrow

☐ _____

Common Grackle

☐ _____

European Starling

☐ _____

Hairy Woodpecker

☐ _____

House Finch

☐ _____

Northern Cardinal

☐ _____

Common Yellowthroat

☐ _____

Barn Swallow

☐ _____

American Goldfinch

☐ _____

Tufted Titmouse

☐ _____

Black-capped Chickadee

☐ _____

LIFE IS BETTER



OUTSIDE

West Manchester Township Parks

Bennett Williams Park – 1101 Taxville Road: This park was named after Bennett Williams Real Estate, they donated the land to West Manchester Township to create a park. This park is home to our “Tot” Summer Playground program and has a sand volleyball court and a half court basketball court. The playground is geared towards the under five children and is our newest addition to this park. There is also a walking path, perfectly suited so you can keep an eye on your children while you are getting some exercise as well.

Dunedin Park – 224 Hanover Road: This park is the home location for our West York Soccer Club teams. There is a nice sand volleyball court and two full size basketball courts at this park. Some of the nicest things about this park are the close to a half mile walking path, the playground and the very large pavilion. We are also hoping this park will eventually have two-four Pickleball courts.

Loman Park – 1881 Hempfield Drive: This park offers two different playground areas; one geared towards the under five children and the other is for 5-12 year old children. We have a Summer Playground program at this location every summer for our 5-12 year olds. There is also a half court basketball court, a Gaga pit and a sand volleyball court.

Westgate Park/Happy Trails – 1600 Westgate Drive: If you like nature and enjoy the “outdoorsy” feel, this is the park-walking trail for you! This park has a very nice walking trail going all through the wooded area. There are picnic tables and benches placed throughout the area for you to sit, relax and take in the nature around you.

West Manchester Parks Continued

Shetter Park – 2175 Parkton Lane: This park has one of our newest playground structures and new pavilion, which includes a high tower, good for climbing to the top and overlooking the whole park. There is also a newly resurfaced tennis court and pickleball court to enjoy. This park also includes a half basketball court with a hoop for our younger children to practice their basketball skills. This is the only park we have in the township that offers a tetherball court too.

Sunset Lane Park – 2458 Sunset Lane: This is our largest park in the township, which offers a very nice walking trail the whole way around the park. There are two sand volleyball courts and two full size basketball courts located at this park. This park also has the largest pavilion, available to rent for parties, family reunions, etc. We offer a Summer Playground program for 5-12 year olds every summer at this location. We can't let out the Gaga pit and nice playground area this park offers as well.



Which Park?

West Manchester Township

Activity: Take a picture of your own to add to your booklet...



West Manchester's OUTDOOR ADVENTURE HUNT

- ☐ Something colorful.
- ☐ A pinecone.
- ☐ An acorn.
- ☐ Something smooth.
- ☐ Something rough.
- ☐ Two kinds of leaves.
- ☐ Two kinds of sticks.
- ☐ Something bumpy.
- ☐ A flat rock.
- ☐ Something fuzzy.
- ☐ Something pretty.
- ☐ A chewed leaf.
- ☐ A flower or petal.
- ☐ A piece of litter.
- ☐ Something you think is a treasure.

**For more information
about West Manchester
Parks and Rec scan
the QR code**



OUTDOOR ACTIVITIES FOR THE BACKYARD

Go on a nature hunt

Have a backyard picnic

Camp out in the backyard

Set up an obstacle course

Paint the fence with water

Look at the stars at night

Start a rock collection

Draw shadow pictures

Have a treasure hunt

Play a game of i-spy

Play handball

Make mud pies

Play hopscotch

Blow Bubbles

Catch bugs

Pick flowers

Paint with flowers

Look at the clouds

Make chalk paint

Build a cubby house

A large, mature tree with a thick trunk and a wide, spreading canopy of green leaves stands in a grassy field. Sunlight filters through the leaves, creating dappled shadows on the ground. The background shows more trees and a clear sky.

**WE ALL HAD A
PLAYGROUND WHEN WE
WERE GROWING UP.**

IT WAS CALLED "OUTSIDE"

SAY YES TO

ADVENTURE



Springettsbury Township Parks

Springettsbury Park- Springettsbury Township Park is the Township's only community park serving the entire Township and large amounts of users on a regular basis. This 51-acre park is a destination for residents with diverse recreation facilities and gathering areas. Active Recreation Facilities: Three sand volleyball courts, three basketball courts, six tennis courts, one adult baseball/multi-purpose field, two youth baseball fields one with overlapping football field, one softball field, an in-line hockey rink, two picnic shelters, and a playground. Passive Recreation Facilities: Two picnic pavilions, loop trails, open lawn areas and an Amphitheatre. Support Facilities: Picnic grills, water fountains, restrooms, two parking areas, concession stands and seating areas.

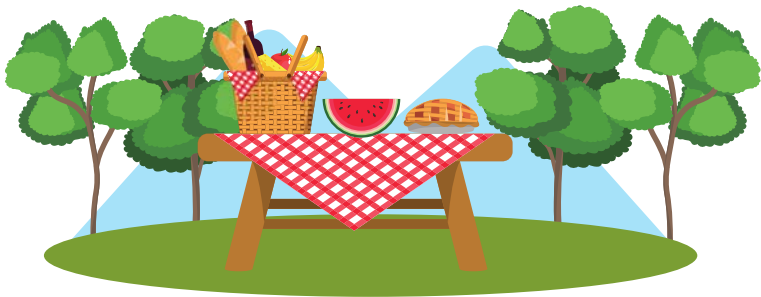
Camp Security Park- An 11-acre neighborhood park located between two residential neighborhoods in the southeast quadrant of the Township. The park offers active recreation facilities in a natural setting along a wooded creek corridor. Active Recreation Facilities: Two multi-purpose athletic fields and playground equipment. Passive Recreation Facilities: Stream access, earthen woodland trails, and picnic pavilion.

Rockburn Park - This small one-acre mini park with active recreation facilities is located on the northern edge of a residential area. Active Recreation Facilities: One basketball court and playground equipment. Passive Recreation Facilities: Picnic pavilion, open lawn area, and painted pavement games area. Pavilion grill, bicycle rack, portable toilet, fence along the Industrial Highway, and one off-street, handicap-accessible parking space.

Springettsbury Township Parks Continued...

Augustus Schaefer Park- Schaefer Park is a small two-acre mini park in the center of a residential block of homes. The park has mainly active recreation facilities and is accessed from Lynbrook Drive via a narrow pedestrian right-of-way. Active Recreation Facilities: One ball field with a 60' baseline and 245'-265' outfield, playground equipment, and a basketball court. Passive Recreation Facilities: Picnic pavilion. Support Facilities: Pavilion grill, water fountain, and bleacher pad.

Stonewood Park - Stonewood is a nine-acre neighborhood park in eastern Springettsbury Township located within three quarters of a mile from August Schaefer and Camp Security Parks. Active Recreation Facilities: One basketball court, playground, and multi-purpose field. Passive Recreation Facilities: Picnic pavilion and accessible wetland area. Support Facilities: Picnic grill, wetland boardwalks, pedestrian bridge, and an aggregate parallel parking area along Stonewood Road for 10+/- cars.



Springettsbury Checklist:



Amphitheater



Athletic Field



Paved Walking Path



Wooded Walking Trail



Basketball Court

"PLAY TURNS OUT TO BE SO STUNNINGLY ESSENTIAL TO CHILDHOOD, IT'S LIKE LOVE, SUNSHINE, & BROCCOLI ALL JUICED TOGETHER.

-LENORE SKENAZY

QR code to Springettsbury Park Map

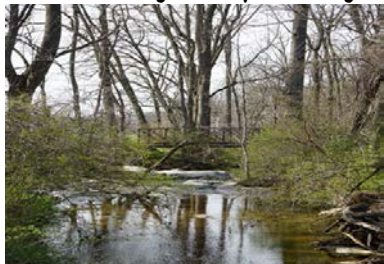
**FOR A MAP OF
SPRINGETTSBURY PARK
TRAILS SCAN
THE QR CODE**



Which Park?

Springettsbury Township

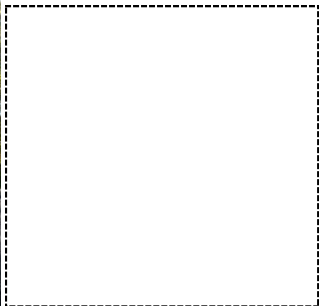
Activity: Take a picture of your own to add to your booklet...



Which Park?

Springettsbury Township cont...

Activity: Take a picture of your own to add to your booklet...



Springettsbury Challenge Activity

M	C	A	M	P	S	E	C	U	R	I	T	Y	H	P	F	D	W
T	R	E	E	S	F	B	I	R	D	S	A	Q	O	O	V	A	H
O	J	P	E	P	I	L	V	O	L	L	E	Y	B	A	L	L	R
E	F	S	B	A	S	K	E	T	B	A	L	M	A	Z	I	O	
K	A	L	N	N	E	E	D	V	R	T	R	A	I	L	S	O	C
V	A	U	G	U	S	T	U	S	S	C	H	A	E	F	E	R	K
Y	H	O	C	K	E	Y	I	S	T	O	N	E	W	O	O	D	B
P	L	A	Y	G	R	O	U	N	D	B	E	R	Q	W	G	V	U
D	B	V	S	O	C	C	E	R	E	V	U	R	O	N	K	G	R
X	Z	P	Z	N	U	N	L	T	E	N	N	I	S	Y	X	H	N
E	O	N	S	P	R	I	N	G	E	T	T	S	B	U	R	Y	S
B	C	T	D	Y	G	I	U	K	M	G	N	A	T	U	R	E	H

Find the following words in the puzzle.
Words are hidden → ↓ and ↘ .

AUGUSTUS SCHAEFER
BASKETBALL
BIRDS
CAMP SECURITY
HOCKEY
NATURE

PLAYGROUND
ROCKBURN
SOCCER
SPRINGETTSBURY
STONEWOOD
TENNIS

TRAILS
TREE
VOLLEYBALL





Eastern York Recreation Parks

Eastern York Recreation serves 3 municipalities: Lower Windsor Township, Hellam Township and Hallam Borough. Below are the three parks that Eastern York Recreation utilize for their programs.

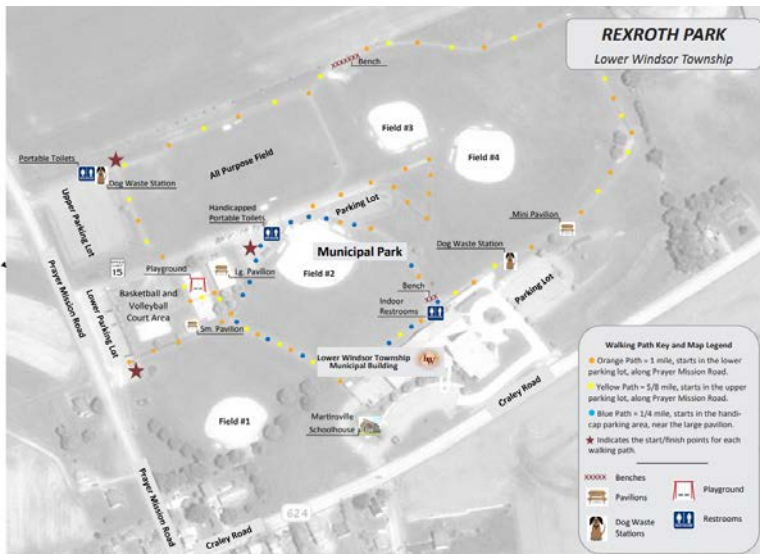
Rexroth Park (1895 Prayer Mission Road, Windsor) - Rexroth Park is a 31 acre park located in Lower Windsor Township. Along with softball diamonds, a multi-use sport field, basketball court and sand volleyball court, the park offers three walking/running marked paths. There is also a play area, gaga pit, and restroom facilities. Parking lots are available off Prayer Mission Road and Craley Road, adjacent to the lower level of the Township building. Lower Windsor Twp has two pavilions available for rent. The large pavilion accommodates up to 120 people and the smaller pavilion can seat approximately 60. Both are located near the playground and offer charcoal grills and electricity. Contact LWT at 717-244-6813 to reserve. A picnic shelter is available on a first come first serve basis. Rexroth Park is home to Eastern York Rec Softball and Eastern York Young Knights Football. It is open daily, dawn to dusk.

Barshinger Complex (95 Accomac Road, York) - This 27.92 acre facility in Hellam Township can be viewed from Route 30 East. With 5 soccer fields, it is home to the Eastern York Soccer Club. It also serves as a community park with a 0.3 mile walking trail, small playground, covered pavilion and picnic shelter which are first come first serve.

Emig Park (2 Buttonwood Lane, York) - The Clayton Eli Emig Park located in Hallam Borough is 20.5 acres and includes two pavilions, several play areas, a paved basketball court, and public restrooms. Hiking on the trail leads you past a small creek and wildlife viewing opportunities. Pavilion rentals are available by contacting Hallam Borough at 717-755-0810.

QR Code for link to Rexroth Park Map

**FOR A MAP OF
REXROTH PARK
SCAN THE QR
CODE**



Which Park?

Eastern York Recreation

Activity: Take a picture of your own to add to your booklet...



what's fit activity for kids your name?

SPELL OUT YOUR FULL NAME AND COMPLETE THE ACTIVITY LISTED FOR EACH LETTER. FOR A GREATER CHALLENGE INCLUDE YOUR MIDDLE NAME & DO EACH ONE TWICE! FOR VARIETY YOU CAN USE A FAVORITE CHARACTER'S NAME OR A FAMILY MEMBER'S NAME.

- | | |
|---|--|
| A jump up & down 10 times | N pick up a ball without using your hands |
| B spin around in a circle 5 times | O walk backwards 50 steps and skip back |
| C hop on one foot 5 times | P walk sideways 20 steps and hop back |
| D run to the nearest door and run back | Q crawl like a crab for a count of 10 |
| E walk like a bear for a count of 5 | R walk like a bear for a count of 5 |
| F do 3 cartwheels | S bend down and touch your toes 20 times |
| G do 10 jumping jacks | T pretend to pedal a bike with your hands for a count of 17 |
| H hop like a frog 8 times | U roll a ball using only your head |
| I balance on your left foot for a count of 10 | V flap your arms like a bird 25 times |
| J balance on your right foot for a count of 10 | W pretend to ride a horse for a count of 15 |
| K march like a toy soldier for a count of 12 | X try and touch the clouds for a count of 15 |
| L pretend to jump rope for a count of 20 | Y walk on your knees for a count of 10 |
| M do 3 somersaults | Z do 10 push-ups |

HAKE
MORE



WORRY LESS



Sensory Nature Walk SCAVENGER HUNT



How many of these can you do?



FEEL the sun on
your face



SMELL a flower



LISTEN to the sound
of running water



TOUCH the soil



LISTEN to the sound
of birds chirping



LOOK at crawling
bugs



FEEL the
smoothness/roughness
of a rock



SEE how many
different animals
you can spot



LOOK for animal
tracks



TOUCH a
pinecone



LISTEN to the sound
of leaves crunching



FEEL the texture of
tree bark

York Township Parks

York Township Park – 25 Oak Street York, PA 17402: The largest and most well-known park in our park system, is just over 67 acres and is the home of the largest playground, Kids Kingdom. Along with the 2 picnic pavilions, a gazebo and a community building that can be rented, this park also has 4 multipurpose fields, 3 baseball/softball fields, 2 basketball courts, 2 sand volleyball courts, 2 bocce courts, 2 horseshoe pits, and 2 smaller playgrounds. All of this is surrounded by a 1.2-mile walking trail. York Township Park is the location to where most programs and events are held by the Township.

Stump Memorial Park – 525 Days Mill Rd York, PA 17408: At approximately 24 acres, this park includes four multi-use fields, two parking areas, a walking trail, and a picnic pavilion. Early in the acquisition phase, the site was identified as a property of interest by the Pennsylvania Historical and Museum Commission (PHMC) and a Phase I Archaeological Survey was performed by an archaeological consultant. The results indicated that a portion of the frontage was indeed used as a settlement by Native Americans. An agreement was reached between the PHMC and the township that approximately 0.6 acres would remain intact, with no construction activities located in that area. This area was incorporated into the design as open space, with the access drive creating a loop around it.

Mill Creek Preserve – located along Chestnut Hill Rd and Camp Betty Washington Rd: This 8.1 acres of natural woodlands include a complete walking trail that crosses over the Creek. It is also home to the Townships only community gardens that were constructed as a community project by residents and scouts. These plots are available to rent from May 1 – October 31.

York Township Parks continued

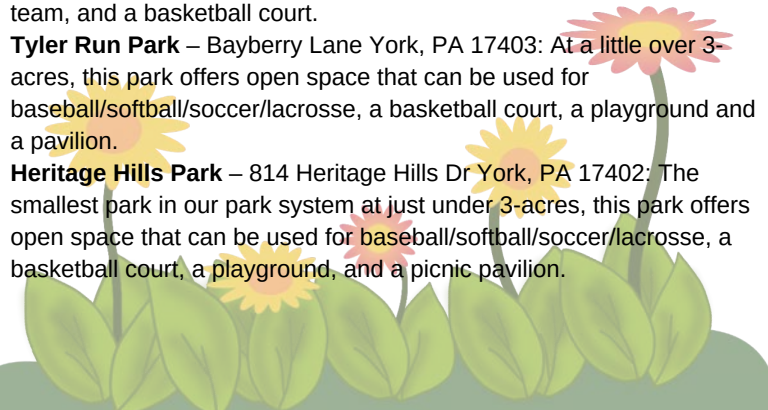
Snyder Park – located where Beaumont Road and Locust Road meet: This 8-acre park offers open space that can be used for baseball/softball/soccer/lacrosse, a basketball court, and a playground.

Fitz Park – 916 S. Sharon Ave Red Lion, PA 17356: This 6.9-acre park is home to the only courts the township currently has for the fastest growing sport in America, pickleball. These pickleball courts can also be used as tennis courts. In addition to these courts, this park offers a basketball court, a playground area, a multi-purpose field, and a picnic pavilion.

Shryock Park – 2462 South Queen Street York, PA 17402: Once the location of the York Township Municipal Offices, this 6-acre park is known for its baseball diamond, dedicated in memory of McCrae Shryock, a member of the 1966 American Legion Post 605 baseball team, and a basketball court.

Tyler Run Park – Bayberry Lane York, PA 17403: At a little over 3-acres, this park offers open space that can be used for baseball/softball/soccer/lacrosse, a basketball court, a playground and a pavilion.

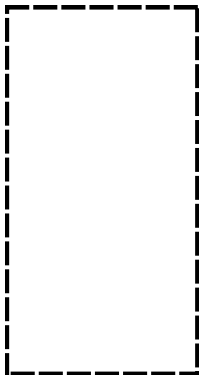
Heritage Hills Park – 814 Heritage Hills Dr York, PA 17402: The smallest park in our park system at just under 3-acres, this park offers open space that can be used for baseball/softball/soccer/lacrosse, a basketball court, a playground, and a picnic pavilion.



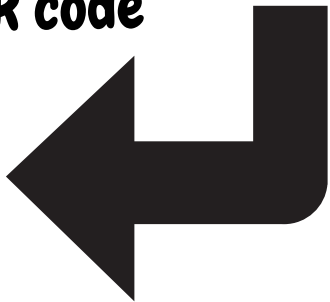
Which Park?

York Township

Activity: Take a picture of your own to add to your booklet...



For York Township's Recreation Page scan the QR code



"PLAY IS THE ROAD TO CHILDHOOD
HAPPINESS AND ADULT BRILLANCE."

-JOSEPH PEARCE





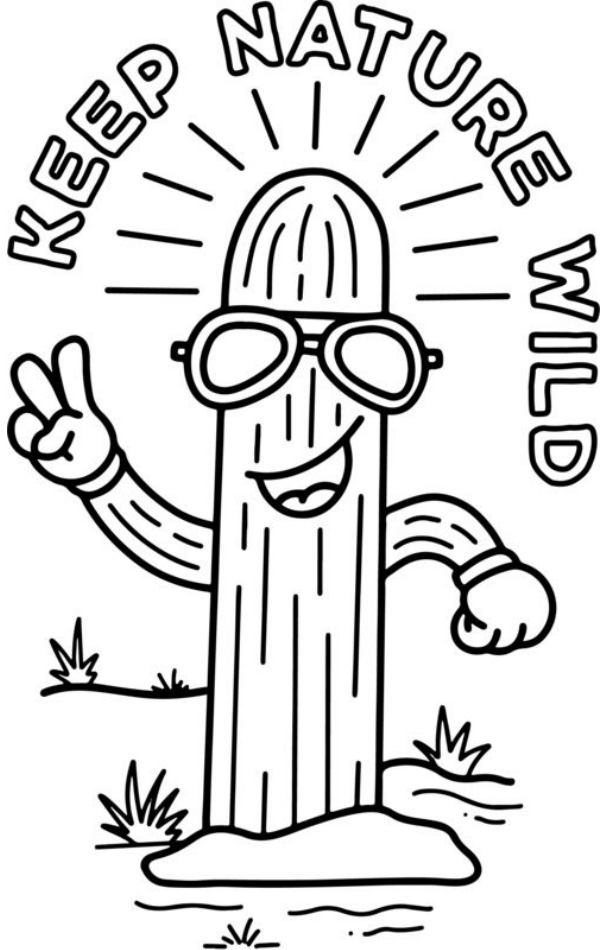
Supplies:

- Construction paper
- Glue
- Nature Items

Instructions:

- Gather leaves, flowers, sticks, etc from nature.
- Glue your gathered nature items to create your name!





Spring Grove Regional Parks

Farmers Field (Paradise Twp) - 3074 Church Rd,

Thomasville: This park offers an outdoor pavilion that holds up to 100 people. The athletic fields can accommodate baseball, softball and soccer teams. Playground, walking paths and portable restroom facility on site.

Spring Grove Community Park (SG Borough) - 210 E

Railroad St, Spring Grove: This park offers an outdoor pavilion that holds up to 60 people. The athletic fields accommodate baseball, softball and soccer teams.

Playground, walking paths, basketball courts, volleyball court, dog park and restroom facility on site.

Stone Ledge Park (Jackson Twp) - Off Route 116 in

Jackson Heights Development: This park offers an outdoor pavilion that holds up to 40 people. Playground, walking paths, game tables, basketball court, and free play area. Portable restroom onsite.

Little Creek Park (Jackson Twp) - 1657 Route 116, Spring

Grove: This park offers an outdoor pavilion that holds up to 100 people. Playground, walking paths, basketball and pickleball courts. Little Creek Golf Course: 9-18 holes golf course on backside of this park and is open from April - October.

Which Park?

Spring Grove Regional Parks

Activity: Take a picture of your own to add to your booklet...



Spring Grove Loves Local Parks!



**Find our Selfie
Station at Little
Creek Park and
add your selfie
to your passport**

**For more information
about Spring Grove
Regional Parks scan the QR**



CAMP
HIKE
REPEAT

Leave it Alone

If you're walking on the wild side or even trimming a bush in your yard, keep an eye out for poison oak, sumac, and ivy.



Poison Oak

3 leaves (never 5)



Looks similar to
poison ivy



Leaf groups grow in
an alternating
pattern on the stem



Grows in dry, sandy
areas as a vine or
small shrub



Less common than
poison ivy



No thorns



Poison Sumac

Red Stems



Oblong, tapered leaves



Grows as a small tree
only in wet areas (often
mud)



Wavy or smooth-edged
leaves (not saw toothed)



Parallel rows of upward
growing leaves



May have pale yellow or
green flowers in spring or
summer green berries in
fall



Poison Ivy

3 leaves (never 5)



Leaves may be
rounded or have
points



Leaf groups grow in
an alternating
pattern on the stem
(not directly across
from each other)



Leaves may be red
or green, even
slightly yellow



No thorns

Very Common!



We've got Knots



overhand knot



figure-eight knot



granny knot



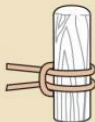
square knot



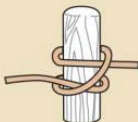
common whipping



fisherman's knot



cow hitch



clove hitch



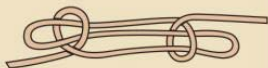
heaving line knot



sheet bend



double sheet bend



sheepshank



bowline



running bowline



bowline on a bight



📍 KEEP NATURE WILD | @KEEPNATUREWILD

OUT is IN

JULY
2023

Celebrating Parks and
Recreation Month



KIDS SUMMER CAMPS

**Full &
Half Days**

**FUN, CREATIVE &
EXCITING ACTIVITIES
FOR GRADES 1-6**

June 12-16

**HANDS ON
SCIENCE**

9am - 3pm

July 17 - 20

**LEGOS
WEEK**

9am - 1pm

July 31 - Aug 3

**OUTSIDE THE
LINES ~ ART**

9am - 1pm

- ✓ **Learn**
- ✓ **Explore**
- ✓ **Imagine**
- ✓ **Play**
- ✓ **Design**

Lower Windsor Twp/ Rexroth Park
2425 Craley Road, Wrightsville

Registration Link

www.easternyorkrec.com

More Information 717-487-5295 eyrecauthority@gmail.com



INDEPENDENCE DAY CELEBRATION

Springettsbury Park
1501 Mt. Zion Road
York, PA 17402

SUNDAY
JULY 2

Food Trucks
6:00 PM



STONEWOOD
7:00 PM



FIREWORKS
9:15 PM





**JOIN US AT DUSK ON JULY 3RD FOR DOVER'S
FIREWORK EXTRAVAGANZA! HELP US
CELEBRATE OUR NATION'S BIRTHDAY.
FIREWORKS WILL BE LAUNCHED FROM EAGLE
VIEW PARK. SPECIAL ACTIVITY AREAS AT
LEHR PARK, STATION 6 AND DOVER TOWNSHIP
BUILDING. FOOD TRUCKS BEGINNING AT 6 PM.**

**Friday Night Flicks
at York Township
Park**

7/7 - Top Gun Maverick

7/14 - DC League of Superpets

7/21 - Black Panther Wakanda Forever

7/28 - Hotel Transylvania Transformania



West Manchester Township's Olde Tyme Carnival And Fireworks

Where: Sunset Lane Park

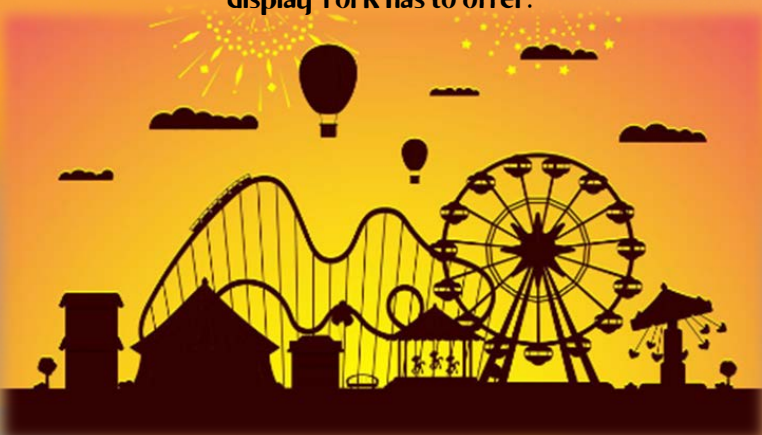
2458 Sunset Lane, York PA 17408

When: Tuesday, July 18 - 5:30pm

Rain date: Wednesday, July 19



The night starts off with lots of homemade games made by our playground kids. There will be 3-4 inflatables, a petting zoo, face painting, stilt walker, food stands, a DJ playing all different kinds of music...and the evening ends with the best fireworks display York has to offer.



GRAND REOPENING CELEBRATION

SPRING GROVE COMMUNITY PARK



FRIDAY, JULY 21ST, 2023 7-9PM

RIBBON CUTTING & CAKE AT 7PM

**COME OUT AND SEE THE NEW AMENITIES ADDED TO OUR
COMMUNITY PARK!**

Outdoor Movie

Starting at Dusk
Toy Story

***FREE Hot Dogs, Chips and a drink 7-8pm & Free Popcorn during movie**

While supplies last

Candy Bars and Drinks will be for sale during the movie

***If attending the Ribbon Cutting Please RSVP by
July 17th, 2023 to: springgroverec@comcast.net**

Borough of
Spring Grove
Pennsylvania

CELEBRATION PRESENTED BY:
SPRING GROVE BOROUGH &
SPRING GROVE REGIONAL PARKS AND RECREATION CENTER

