



DOVER TOWNSHIP Business & Economic Local

Explore

Construct

Thrive

Succeed

2480 West Canal Road

Our Location, Surroundings & Transportation

by Tiffany Strine, Dover Township Secretary

Our Location

Dover Township, located in the northwestern part of York County, is about eight miles from the City of York and thirty-four miles from the City of Lancaster. The cities of Carlisle and Harrisburg are both approximately the same distance (twenty-six miles) from Dover Township. Harrisburg is directly north of Dover Township while Carlisle is to the northwest. Dover Township is approximately twenty-eight miles from the City of Gettysburg.

Our Surroundings

As part of York County, Dover Township finds itself located in close proximity to major cities along the eastern seaboard of the United States. Due to these factors, Dover Township as part of York County is considered to be on the fringe of "megalopolis", the emerging super-

city conceived to be developing along the Atlantic Coast from Boston, Massachusetts to Norfolk, Virginia. As this super-city develops, its economic, cultural and social influences will be welcomed and received within York County and within Dover Township.

Transportation

Several highways are readily accessible to the residents of Dover Township to provide access to the major cities of the region. United States Route 15 and United States Route 30 provide access to cities such as: Gettysburg, Harrisburg, Lancaster and various points east. Interstate 83 provides access to Baltimore and Washington, D.C. to the south and to the following cities: Harrisburg, Philadelphia, New York and various other cities to the northern portion of the Pennsylvania Turnpike. Pennsylvania Route 74 which navigates the Township from

northwest to southeast, supplies connections between Carlisle and the City of York.

If you need assistance getting to Dover Township, simply contact our municipal office and someone will be more than happy to provide you with directions!

Dover Township Municipal Offices

Dover Township Business and Economic Local is your business guide to the Dover area. We encourage you to consider locating or expanding your business here.



Contact Our Offices

2480 West Canal Road, Dover, Pennsylvania 17315.
Telephone (717) 292-3634 Fax Number (717) 292-1136,
Website www.dovertownship.org

Page 1

Development, Natural Features and Growth

Development and Natural Features

Extensive area is covered by Dover Township. As per the United States Census Bureau, Dover Township has a total area of 42.1 square miles. 42.0 square miles is land and 0.1 square miles or 0.17 percent is water. Dover Township completely surrounds the Borough of Dover.

The main character of development in Dover Township is rural. Much of



the area within Dover Township consists of acres of farmlands and forests. Although this may be the

predominate land use in the Township, it cannot be said to be the most influential.

Growth

Pennsylvania's Municipalities Planning Code (MPC), which is the source of State law on the use and development of land, establishes guidelines for a municipality's comprehensive plan and requires that adopted plans be reviewed periodically. A comprehensive plan is not law. Instead, it is a plan for future development in the municipality. Our plan is a joint one with Dover Borough. The project has involved both a review and analysis of existing conditions and development of goals to achieve in the future. Inquire within for further information regarding the 2020 Joint Comprehensive plan or find more information at the following link <https://www.dovercompplan.org/>.

Township Prospects

Dover Township is advancing growth within the current growth boundary. There is a definite trend towards suburbanization within the Township as evidenced by the many subdivisions and commercial activity taking place in the southeastern part of the Township. This is greatly impacting areas along Route 74 within the Township. There is an emerging pattern of residential and commercial uses that will create an important effect upon the overall development of the Township. This is also creating a growing effort to preserve "important essential farmland" and natural features such as forested areas.

WE ARE GROWING

Dover Township; lies within York County lines. York County is one of the fastest growing counties in Pennsylvania, with a strong base in manufacturing and agriculture. Dover Township has so much to offer to prospective business! Residents are attracted to our homes in the country as well as our suburban subdivisions alike. Our residential growth to over 21,000 residents makes Dover Township an excellent place to bring your commercial endeavor!



DOVER TOWNSHIP

Local Government



Dover Township Municipality



Laurel Oswalt

Township Manager, Dover Township.

Michael Cashman

Mr. Cashman serves as the Chairman, Board Supervisors and liaison to Township Water and police.

Charles Richards

Mr. Richards serves as the Secretary, Board of Supervisors and liaison to Streets and Highways, Ambulance and Fire and Emergency.

Stephen Parthree

Mr. Parthree serves as Supervisor and liaison to Parks and Recreation and the Industrial/Commercial Development Committee.

Stephen Stefanowicz

Mr. Stefanowicz serves as Chairman and a Supervisor liaison to Administration, Sewer and the Waste Water Treatment Plant.

Robert Stone

Mr. Stone serves as a Supervisor and liaison to Water, Sewer and Municipal Separate Storm Sewer Systems



Dover Township Labor & Workforce Statistics

Here you will find statistical information regarding Dover Township's workforce.

DOVER TOWNSHIP CIVILIAN'S

CIVILIAN LABOR FORCE OVERALL

67.3%

CIVILIAN TOTAL EMPLOYMENT

10.3 (In thousands)

CIVILIAN TOTAL UN-EMPLOYMENT

1.9 (In thousands)

DOVER TOWNSHIP CIVILIAN'S

CIVILIAN LABOR FORCE TYPES

Strong areas of employment for Dover Township Residents are centralized in:

Construction and Manufacturing

Wholesale, Retail and Trade

A Township in the Commonwealth of Pennsylvania, a state of the United States of America, is one of three types of municipalities in the state, along with cities and boroughs. There are two types of Townships: first class and second class, each operating under its own laws. Dover Township is a second-class municipality.

DOVER TOWNSHIP IS SERVED BY

PA HOUSE DISTRICT 196
REPRESENTATIVE SETH GROVE (R)

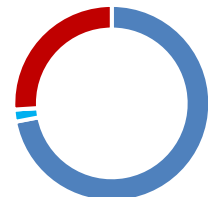
Offices located in York
2501 Catherine Street
Suite 10
York, PA 17408
(717) 767-3947
Fax: (717) 767-9857

PA SENATE DISTRICT 31
SENATOR MIKE REGAN (R)

PA U.S. HOUSE REPRESENTATIVE
SCOTT PERRY (R)

Classes of Workers

- Private Wage and Salary
- Government
- Self-Employed
- Unpaid Family Workers



DOVER TOWNSHIP CLASSES OF WORKERS

Private Wage and Salary
72%

Government Workers
2%

Unpaid Family Workers
0%

Self-Employed
26%

Township Statistics



MEDIAN HOUSEHOLD INCOMES

YEAR 2014-2018

\$62,493.00 for a Household

\$30,508.00 for a Family



Dover Township Households

As of 2011-2015 there were 8,794 households out of which 20.5% had children under the age of 18 living with them, 67% were married couples living together and 30.2% all households were made up of individuals. The average household containing persons 65 years and over was 17.3% and total residing Veterans equates to 1,749 residents.



QUICK STATISTICS

21,246

This is the number of residents of Dover Township during the year 2011-2015.

8,794

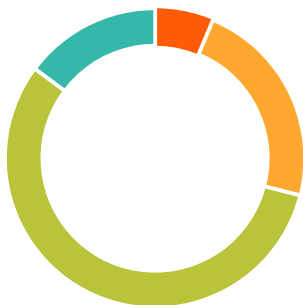
This is the number of households of Dover Township during the year 2011-2015.

Population, Race, Age and Sex

All Dover Township Statistical information contained herein was derived from the U.S. Census Bureau and the American Community Survey.

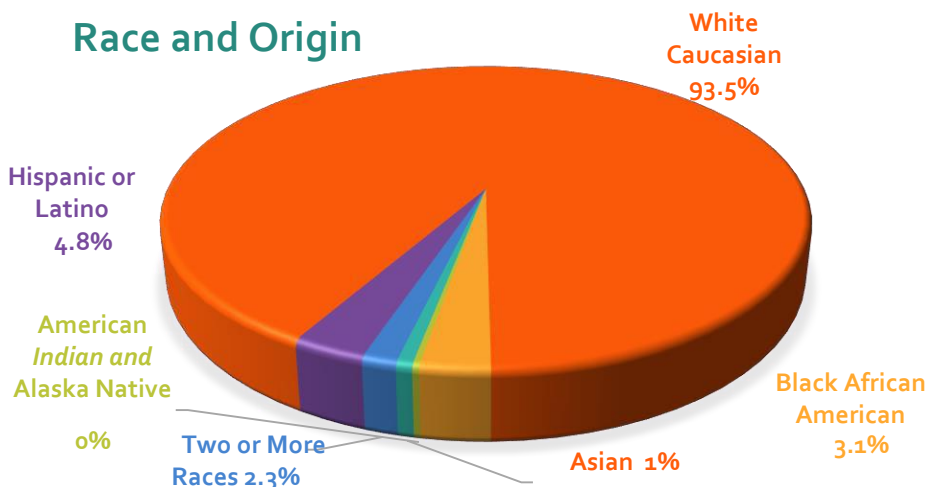
Various county-wide statistics are updated more frequently than the decennial census, including the American Community Survey (ACS), which is administered by the U.S. Census Bureau above and below.

Age and Sex



- Persons Under 5 Years of Age
- Persons Under 18 Years of Age
- Persons 19 thru 64 Years of Age
- Persons 65 Years and Older

Race and Origin



DOVER TOWNSHIP HOUSING

Dwelling Units in 2014
8,794

Owner Occupied Units in 2014
81.9%

Median Value of Owner-Occupied Units - \$157,200.00

Median Monthly Owner Costs with a Mortgage - \$1,469.00

Monthly Owner Costs without a Mortgage - \$523.00

Median Gross Rental Costs - \$860.00

Dover Township Education

Dover Township Education

The Dover School District offers its students specialty areas of study; that many others do not, along with core curriculum to help better prepare the students for the future. Dover Township is served by the Dover Area School District.

Students may also attend one of the Commonwealth's cyber charter schools at no additional cost to the family or student. The local school district pays the Pennsylvania

Department of Education a set tuition fee to the cyber charter school that the student chooses to attend. One key program Dover School District offers its students is the Dover Area High School CTE Programming. Students can preplan their futures for careers in the following fields of study:

1. **Marketing**
2. **Accounting**
3. **Business Management Admin.**
4. **Agriculture Mechanics**
5. **Horticulture**
6. **Commercial Advertising and Art**

7. **Engineering Technology**
8. **Computer Technology**
9. **Geospatial Technology**
10. **Workforce Development**

The local school district also provides Pennsylvania Skills Certificates. The Pennsylvania Skills Certificate is a program created by the Pennsylvania Department of Education to recognize career and technical education students who have shown advanced skill achievement in their technical programs. The Pennsylvania Skills Certificate is one of the qualifying documents used to offer students advanced college credits with partnering postsecondary institutions.

School Age and Early Childhood

School Age

The Dover Area School District believes that every child deserves a life-changing education and are committed to getting outstanding results for their students. Below are the names of the schools located in Dover.

Dover Area High School

Dover Area Elementary School

Dover Area Intermediate School

North Salem Elementary School

Weigelstown Elementary School

Leib Elementary School

Early Childhood

The Dover Area offers various early childhood educational opportunities. Below are the names of the schools located in Dover.

Creative Kids

Robin's Nest

Weigelstown Child Care Center

Tiny Blessings

And Various Churches offering early childhood curriculums.

DOVER AREA SCHOOL DISTRICT CONTACT DOVER SCHOOLS CONTACT INFORMATION

Dover Area School District

www.doversd.org

Superintendent – Tracy Krum
101 Edgeway Road, Dover,
Pennsylvania 17315

Telephone (717) 292-3671

Dover School Board of Directors

President – Mr. Nathan Eifert
101 Edgeway Road, Dover,
Pennsylvania 17315

Telephone (717) 292-3671



Dover Township Public Works and Utilities

Township Highways and Roadways

Dover Township's Highways and Roads consist of 121 miles of Township roads and bridges. The Township also consists of and is divided by numerous PennDOT roadways. These roadways consist of the following:

PennDOT Roadways

East and West Canal Road

Bull Road

South Salem Church Road

Admire Road

Biesekcer Road

Colonial Road

Harmony Grove Road

Dauidsbrug Road

Big Mount Road

Dover Township owns and operates an exceptionally maintained fleet of equipment to maintain its highways and roadways infrastructure. Maintenance and safety of the Dover Township roadways is our greatest concern. The Road Crew Chief Superintendent, road crews, public works personnel, managers and elected officials of Dover Township are constantly striving to create and maintain the safety of our community and its citizens.



DOVER TOWNSHIP HIGHWAYS AND ROADWAYS DEPARTMENT

The Dover Township Highways and Roadways are strategically overseen and maintained by a Highways and Roadways Crew Chief. The Dover Township Road Crew is comprised of a crew of seven crew members, one of which is the Road Crew Superintendent. Amongst the Dover Township Road Crew, a collection of over thirty years of experience has been achieved. The Dover Township Road Crew works diligently and tirelessly to assist Dover Township residents in emergencies, projects, and ongoing maintenance of Township roadways. All Dover Township crew members are fully trained professional Road Scholars. The Pennsylvania Department of Transportation Local Technical Assistance Program provides in-depth training to municipal employees on the latest road-related technologies and innovations. Road Scholars help serve the community with high standards and priority care to the community in which they serve.

Electrical Utility Services

Electric utility service for Dover Township are currently Adams Electric Co Operative and Met Ed Electric.

Adams Electric Co Operative: A not-for-profit member-owned electric distribution utility, serving 32,000 member-accounts in Adams, Cumberland, Franklin, Perry and York counties of South-Central Pennsylvania.

Met Ed Electric: The Pennsylvania Met-Ed Electric Choice program is available Dover wide. Met-Ed or Penelec may deliver the electric service to your home or business.

Cable and Internet Utility Services

Cable and internet utility services for the Dover area may be obtained residentially or commercially, optimizing to fit any need large or small.

Cable and internet utility services that are offered within the Township may be obtained through various entities and a few of these entities are listed below.

Dover Township Utilities

Dover Township Collective Utilities

Dover Township maintains the infrastructure for both public water and public sewer service within the Township. The area contains various electrical, cable, gas and internet utility services to the area as well.

Dover Township continues to explore new resources to increase capacities in all areas for productive and positive expansion.



Dover Township utilities are reviewed for systematically future expansions and improvements to the Township Water, Wastewater Collection and Wastewater Treatment functions thru the Dover Township Comprehensive Plan.

Dover Township creates its Comprehensive Plan for continuous future growth and improvement with a five to ten year planning structural base.

DOVER TOWNSHIP UTILITIES

WATER UTILITIES

The Dover Township water system consists of:

- ⇒ 10 Wells with Pump Houses
- ⇒ 75 Plus Miles of Water Line
- ⇒ 5 Storage Tanks
- ⇒ Approximately 400 Hydrants
- ⇒ And Growing!

The Dover Township Water System is operated and managed by a DEP Licensed Water System Operator with various certifications, licenses and extensive years of experience. A cumulative twenty years of experience is held by the Dover Township Water

Department. The following Water Licensures are held by the Dover Township Water Department personnel: Water Licenses A, B, E, 4, 9, 11, 12. The Dover Township Water Department also maintains personnel that hold Waste Water Licenses Classes A, E, 1, 4. Additional credentials of the Dover Township Water Department include Pennsylvania Spray License, and IRC Residential Plumbing Inspector License.

MAINTENANCE AND FACILITIES

Public parks and daily maintenance that keep Dover Township beautiful are routinely maintained by a Dover Township Maintenance, Parks and Facilities Crew with over a combined 50 years of service! Playground maintenance and safety inspections are performed consistently. Seasonal maintenance of the roadways and community are essentially served. The Dover Township Maintenance and Facilities personnel have licenses to spray for vegetation and inspect playgrounds for safety. Dover Township possesses a diverse workforce that is always ready and able for any new challenge!

Dover Township is currently in the works of expanding park space and adding a new park is currently in process! The New Park is called Eagle View Park. Eagle View Park will include recreation space, walking trails, an amphitheater, a sledding hill, a warming station and more!



SEWER UTILITIES

Collection System consists of:

- ⇒ Both Township and Joint Authority Sewer Collections
- ⇒ 2,136 Manholes
- ⇒ 411,840 Feet (or 78 Miles) of Collector Lines

⇒ 264,000 Feet (or 15 Miles) of Interceptor Lines

⇒ The Joint Interceptor is 24,548 Feet (or 4.65 Miles) of the 62,890 of the total footage.

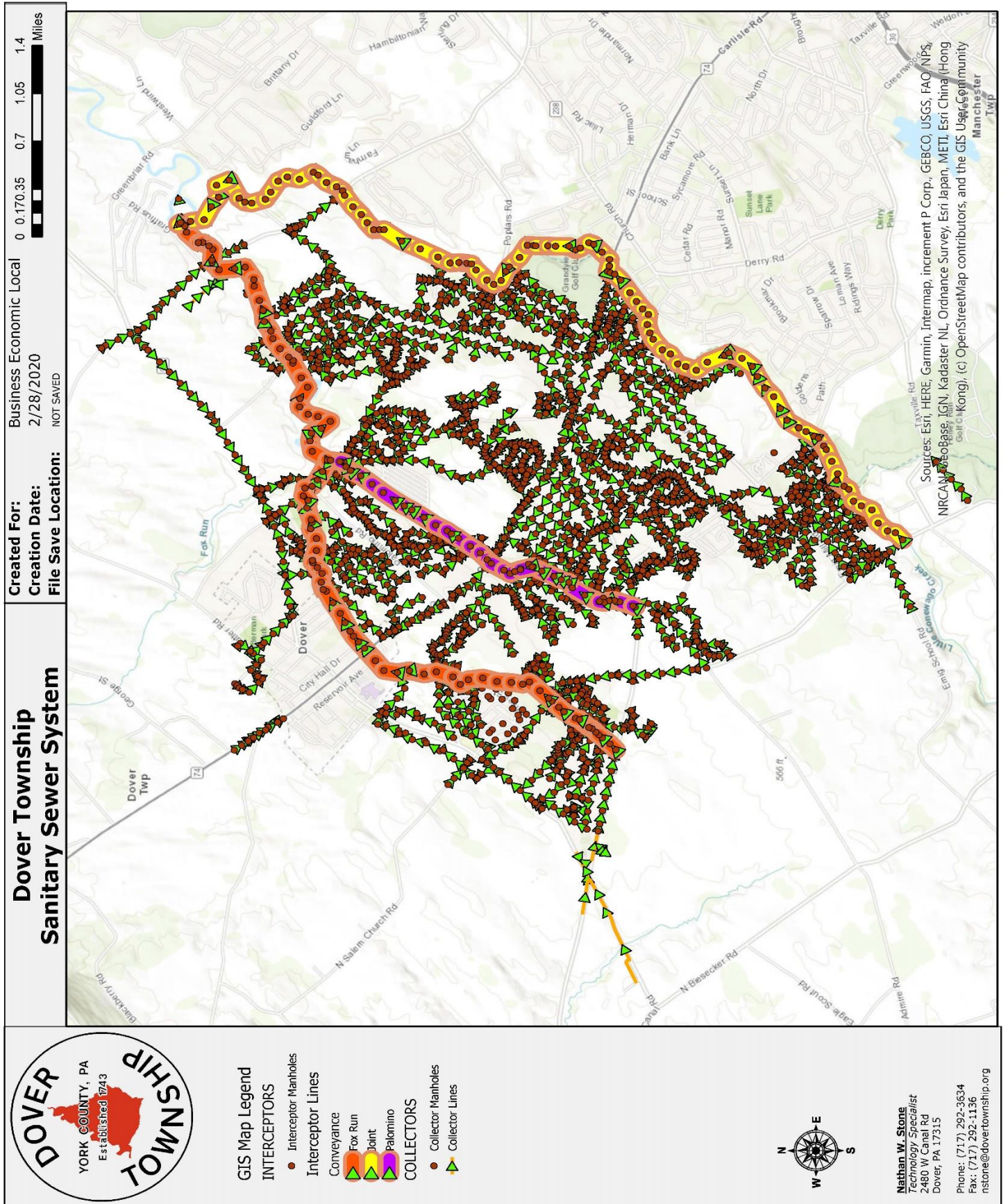
The Dover Township Wastewater Collection System is operated and maintained by a DEP Licensed Wastewater Collection System Operator who has years of private sector experience in the field. The Dover Township Wastewater Collection System department has two full time licensed employees. The licenses are with the Commonwealth of Pennsylvania.

WASTE WATER TREATMENT

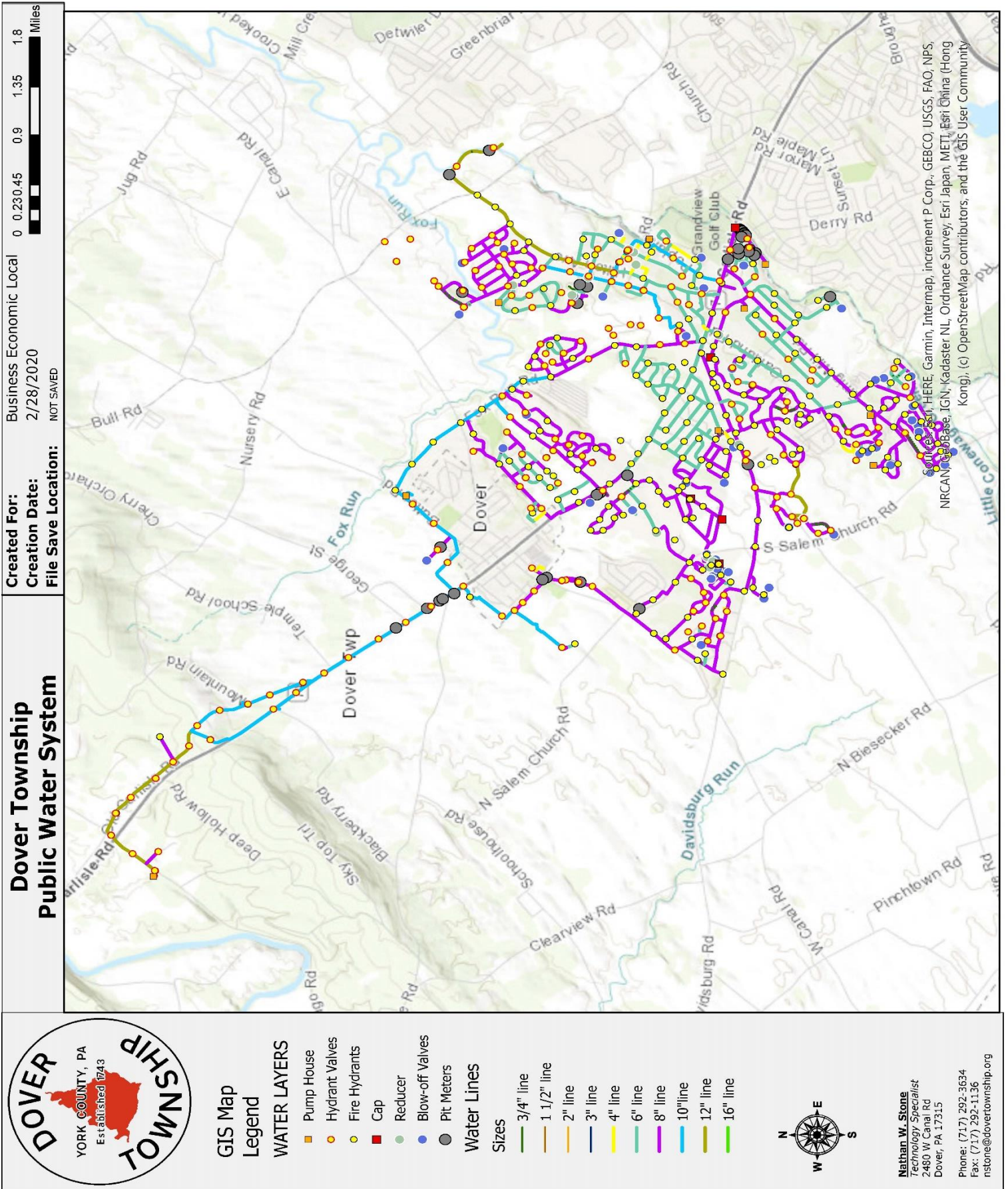
The Dover Township wastewater treatment facility consists of:

- ⇒ The Dover Township Wastewater Treatment Plant is a Regional facility.
- ⇒ Receives from Dover Township lines and joint lines with West Manchester, Manchester and Conewago Townships.
- ⇒ 8,000,000 Gallons Per Day Capacity and an Average 4,000,000 Daily Capacity.
- ⇒ Ability to withstand and maintain all levels of flows.

The Dover Township Wastewater Treatment Plant is operated and maintained collectively by a team of specialized personnel. The Plant is operated and managed by a DEP Licensed WWTP Operator for a Class A Plant. The Wastewater Treatment crew proudly serves their community 24 hours a day 7 days a week with eight personnel members. The WWTP Superintendent has been with Dover Township for 19 years and has been a certified operator for over 25 years. The Assistant Superintendent has 10 years' experience in the wastewater field, and the Laboratory Supervisor has been with Dover Township since 2002. Educational backgrounds include 4 bachelor's degrees that include Environmental Studies, Science with Physics minor, Medical Technology and Computer Information Systems. Personnel possess 2003 EPA Region III Operations & Maintenance Excellence, 2006 PWEA Safety Award, 2011 CPWQA Laboratory Excellence, 2014 CPWQAQ Operator Excellence and many more! The WWTP Laboratory continues to be accredited to perform many tests, through PA Act 252.



Above is a map of the lines of service for the Dover Township Sewer System.



Above is a map of the lines of service for the Dover Township Water System.

Quality of Life

HEALTH CARE

Health Care in Dover Township

Dover Township is conveniently located near various healthcare facilities; some lying within the Township, that serve to maintain and improve the health of all of Dover Township!

The area is served by some of the most qualified health professionals consisting of providers and practitioners.

These facilities provide primary care, secondary care, tertiary care and other public health facets. The local health care systems are organizations and establishments instilled to meet the health needs for everyone.

Varieties of Healthcare within Dover Township

Dover Township offers various medical and healthcare facilities that practice and specialize in the following areas:

- ⇒ Allied Health Professions
- ⇒ Mental Health Offices
- ⇒ Chiropractic
- ⇒ Podiatry
- ⇒ Physicians and Physician Associates
- ⇒ Dental
- ⇒ Midwifery
- ⇒ General Medicine and Nursing
- ⇒ Optometry
- ⇒ Pharmacy

Health Care Expansions

UPMC Hospital has opened its doors in York County. This forward growth and expansion will open many facets for growth extending unto Dover Township.

UPMC Hospital is a new, state of the art, 220,000-square-foot hospital with four floors and 102 beds.



Healthcare		
Hospitals in York County Providing Service To Dover Township		
Hospitals	Licensed Beds	Admission
Hanover Hospital	93 Beds	5701
UPMC Hospital	102 Beds	4960
York Hospital	578 Beds	29912
York County Totals	772 Beds	40303

Nursing Homes	16	Licensed Beds	
		2,211	93%
Number of Nursing Homes Providing Service to the Dover Township Area		Admissions	



Local Attractions

Whether you're here to stay or just traveling with the family, your spouse or a few friends, Dover Township and the surrounding areas offers so much to see and do!

The area's best attractions are all located conveniently within reasonable reach! Consider dropping by the Dover Antique Mall and Farmers Market, Round Top Mountain Resort, or bring a picnic to a local park. Nature lover? Consider visiting one of the many local areas like Pinchot State Park or Rusty Rocks Alpaca Farm to experience nature in its true and genuine beauty.

WE ARE GROWING

Dover Township welcomes all varieties of business to the community! Dover Township welcomes you and your business venture with open arms and hopes that you choose to further explore the splendor and possibilities our hometown has to offer!



Varieties of Businesses and Local Attractions within Dover Township

Dover Township offers various businesses and local attractions, and a few are listed below:

- ⇒ **Harbold's RV's (4803 Carlisle Road)**
- ⇒ **Dover Antique Mall and Farm Market (5010 Carlisle Rd)**
- ⇒ **Smittie's Soft Pretzel (6065 Carlisle Rd)**
- ⇒ **Brewvino's (2779 Carlisle Road)**
- ⇒ **Gifford Pinchot State Park**
- ⇒ **Various Historic Events**
- ⇒ **Barefoot Farms (6621 Bluebird Ln)**
- ⇒ **Grandview Golf Course (2779 Carlisle Rd)**
- ⇒ **Camelot Valley (6650 Detters Mill Road)**
- ⇒ **Honey Run Golf Course (3131 S Salem Church Rd)**
- ⇒ **Sarah's Creamery (121 S Main St)**
- ⇒ **Dover Area Community Library (3700-3 Davidsburg Rd)**
- ⇒ **Scrap Pad (3880 Carlisle Rd)**
- ⇒ **Rusty Rocks Alpaca Farm (1721 Temple School Road)**
- ⇒ **Smyser's Farms (2691 E Berlin Rd)**
- ⇒ **Cedar Lake Campground (5051 Pine Hill Rd)**
- ⇒ **Brookside Park (4054 Fox Run Rd)**
- ⇒ **Dover Community Park (2481 W Canal Rd)**
- ⇒ **Gettysburg Farms RV Campground (6200 Big Mt Rd)**
- ⇒ **Mount Zion Offroad (4785 Carlisle Road)**
- ⇒ **Harvest Moon Roadside Stand (3531 Carlisle Rd)**



Dover Township Business& Economic Local

2480 West Canal Road
Dover, Pennsylvania 17315



[Addressee]
[Street Address]
[City, ST ZIP Code]