

DOVER TOWNSHIP

York County, Pennsylvania



WINTER 2012



2013 BUDGET MESSAGE FROM THE TOWNSHIP MANAGER

The tax monies you pay to the Dover Township General Fund in 2013 will be used for the following services: Police, Highway, Facilities, Administration and Recreation Departments. Our anticipated expenses in 2013 total \$5,232,461. No tax increase is scheduled for 2013.

In addition, the Board of Supervisors has borrowed one million dollars to use toward road projects for 2013-2015. The 2013 Projects are:

Schoolhouse Road, from Davidsburg to Conewago
Pine Hill Road, from Davidsburg Road to the bridge (Storm, gutters, 12.5 mm)
Pinchtown Road from Canal to Paradise (Storm, gutters, 12.5 mm)

The Highway Aid Fund, which is funded by Liquid Fuel Allocations from the State, anticipates \$703,000 in expenses for 2013. Projects include the following:

- Poplars Road (Overlay)
- Alta Vista Road (Reclamation and Overlay)
- Conewago/Rohlers Church Roads (Overlay)
- Pine View/Pine View Court (Overlay)
- Anita Drive (Storm water Work)

The Recreation Fee In Lieu of Fund consists of monies paid by developers on a per lot basis for the purposes of providing further recreation facilities in Dover Township. There are no anticipated projects for this fund for 2013.

The Sewer Fund's total expenses are anticipated to equal \$6,171,600. A rate increase of \$5.00 per quarter or \$20 per year has been authorized. The Wastewater Treatment Plant has recently completed its upgrade necessitated by the Chesapeake Bay Initiative. Our Sewer collection crew continues to look for sources of infiltration and inflow in the system to lessen the costs of treatment of flows. Repairs to the collection system will continue to be a top priority in 2013.

The total expenditures for the Water Fund are expected to equal \$2,059,041. The Township anticipates continuing its efforts at new well exploration and working on various upgrades to several of our wells.

As always, Dover Township will continue to work to provide you with the best services we can in the most efficient, professional and cost effective manner possible.

IN THIS ISSUE

Leon B. Lankford Operation Building.....2
Dover's Lion's Club.....3
Composting, Rain Gardens and You3
Hemler Animal Control Service4
Shiloh Garden Club.....4
New Hope Ministries4
Union Fire and Hose Co. #1.....5
Heritage Senior Center.....5

Dover Area Community Library.....6
Sports Registrations.....7
Dover Township Groundhog Day.....7
Fishing & Hunting Flea Market.....7
Fitness Programs8
Easter Egg Hunt.....9
Dover Township Bus Trips for 2013.....9
2nd Annual Dover Recreation Yard Sale 9

Dover Township Volunteer Fire Co.10
We Recycle11
Snow Emergency Routes.....11
Snow Removal Season12
Can We Find You In An Emergency.....12
Water & Sewer Commonly Asked
Questions & Answers13
Dover Twp InformationBack Cover

2480 West Canal Road • Dover, Pennsylvania 17315

www.dovertownship.org



4555 Paradise Rd. | Office 717-292-5696
Dover, PA 17315 | Fax 717-292-5807
www.hivelylandscapes.com

today great care is closer than you think.

MedExpress+
URGENT CARE Great Care. Fast.

Open Every Day
9 a.m. to 9 p.m.

YORK
400 Lincoln Road
Room 30, Across from I & Fitness
717-940-2273

medexpress.com
facebook.com/medexpress

Stone, Duncan & Linsench, PC

Attorneys & Counselors

Nearly All Areas of Law:

Business • Real Estate • Military • Intellectual Property
Family • Criminal • Bankruptcy • Federal & State Litigation
Probate & Estate Planning • Motorcycle Accident •
Nursing Home Malpractice • Immigration • Personal Injury
Municipal & Zoning • Gas & Oil Law • HOA Law



The Key to Great Legal Services

STONEDUNCAN.COM
717-432-2089

Miss Lucy's Dog Treats



Open House February 21-24

Receive **20% OFF** all orders during this event!
You're invited to shop at the bakery, phone or internet.

www.misslucysdogtreat.com
5241 North Salem Church Rd.

Approx. 1 mile west of Dover Square
Thurs, Fri, Sat 9 - 9 and Sun 9 - 5

Decorative items and Easter Baskets will be available.
Light refreshments will be provided. Drawings and Prizes.
Bring your pet's photo eating our treats to enter our **photo contest!**

717-292-6593

Dover Antique Mall Etc.

"Not Just Antiques"

Hours: Thursday through Sunday 10a.m to 5pm

5010 Carlisle Road
Dover, Pennsylvania 17315

(717) 292-2629
Doverantiquemall@gmail.com



Sprayed - On Truck Bed Liners

4785 Carlisle Rd. • Dover, PA 17315
Ph. 717.308.1844 • Cash3610@comcast.net

COMPLETE LINE OF JEEP, TRUCK, & SUV ACCESSORIES

Water Trucks • Sand Spreaders
Waste Containers • Cement Hoppers
Line Utility Trailers • Chemical Room Floors
Chemical Trucks • Chemical Tanks • Street Sweepers
Concrete Forms • Underground Pipes • Scrubber Tanks
Pest Control Vehicles • Rental & Lease Fleets
Dump Truck Beds • Suction Impellers/Fans • Horse Trailers
Fertilizer Hoppers • Kennels • Veterinarian Vehicles
Boat Decking • Pool Decking • Trailer/RV Fronts & Roofs
Roofing • Sounds Deadening • Wood Coating

Sam's Painting & Drywall, LLC

PA019981



Commercial & Residential
Interior & Exterior
Painting • Light Carpentry
Staining • Power Washing
Snow Removal/Junk Removal

Call Sam . . . He's the handy man!

Office 717-308-0373

Cell 717-577-6572

email samuelkearse@yahoo.com



717-792-0536
www.minnichslawn.com

RESIDENTIAL & COMMERCIAL MOWING

- Aeration
- Slit Seeding
- Dethatching
- Top Dressing
- Mulching/Edging/Weeding
- Stump Grinding
- Shrub & Hedge Trimming
- Spring & Fall Cleanup

1700 Baker Road • York, PA 17408
PA 047052

Leon B. Lankford Operation Building

In 2010, the Dover Township Sewer Authority unanimously passed a resolution and presented a signed and sealed copy of it to its former member, Leon B. Lankford. This resolution officially named the operations building which was then undergoing expansion, the "Leon B. Lankford Operation Building." This was in recognition of his many years of service to the Authority and to Dover Township. Recently the lettering was affixed to the building, completing the plant upgrade project.



Leon B. Lankford Operation Building

An advertisement for Laurel Manor Condominiums. The image shows a modern, two-story house with a white garage door and a stone fireplace. The house has a grey roof and white siding. The text "luxury ranch condo living" is overlaid in a green banner at the top left. The name "Laurel Manor" is written in a large, stylized font in the center, with a small leaf icon. Below it, the word "CONDOMINIUMS" is written in a smaller, bold font. At the bottom, the phone number "852-8828" and the website "www.michaelbarshingerbd.com" are displayed.

DOVER LION'S CLUB

The Dover Lion's Club **Spring Chicken Bar-be-que** will be held Saturday, April 6, 2013 starting at 11:00 AM until sold out at the Dover Boro Fire Hall. Thanks to the Community support for the Fall bar-be-que. It was a **Sell Out**.

The Dover Lion's Club has been honored to accept into membership two new members. District Governor Noah E. Krout from Jefferson Lion's Club installed Nancy Feather and Patricia Friedman on Oct. 25 during District Governor Night.

The Dover Lions Club would like to invite anyone interested in joining the Club to contact President, Thomas Fadely. For information and application please call 292-3130 or visit our website at www.lionwap.org/Dover, PA for information. Our mission statement is "to empower volunteers to serve their communities, meet humanitarian needs, encourage, and promote international understanding through Lions Clubs."

We will again be collecting eye glasses and hearing aids at the Spring bar-be-que or they can be deposited in any Lion Clubs boxes located at several businesses throughout the community. Please save these items because there are many people in the world who will experience a new life with them.



The Dover Township Fire Department has **BINGO every Friday night** at 3700 Davidsburg Rd. Door opens at 5 pm and games start at 6:45 pm.

Facts you need to know . . .



- With the upcoming bad weather approaching, **make sure you close the lid on your garbage cart** when taking it back in. There have been reports of the lid flipping back and injuring people.
- **Christmas tree collection** will be on January 12, 2013. If you miss that day, you can put it out the following weeks as your one large item.
- When **placing carts out for pick up** make sure the handle is facing the street. This will make pick up easier for the garbage drivers.

Stormwater Management Seminar **COMPOSTING, RAIN GARDENS AND YOU** *Thursday, April 18*

We'd like to send out a big thank you to everyone who joined us for our first seminar on stormwater. On Thursday November 15, Dover and West Manchester Townships partnered in 'Stormwater 101, It's More than Just the Bay'. Three superb speakers made the new regulations a little easier to understand. Lindsay Gerner of the York County Planning Commission presented The Big Picture; Connected by Water. Gary Peacock of the York County Conservation District spoke on Be water Wise; Managing your On-lot Stormwater, and Terry Myers, P.E. from C. S. Davidson gave a presentation entitled Stormwater....what, how, and why. Each of the speakers touched on different areas of importance in managing stormwater on your lot, and we'd like to thank each of them for their efforts.



When rain or snowmelt flows into the street, over your neighbor's property, or into the neighboring stream, it goes directly into the Susquehanna River and then the Chesapeake Bay, taking any pollutants right with it.

We have scheduled the spring stormwater event for Thursday, April 18th 2013 – again beginning at 6:30. This inter-municipal seminar will be held at the Carousel Building in Brookside Park, on Fox Run Road in Dover. John Dagan, master Gardener will give a presentation on composting, and Gary Peacock, Watershed Specialist, York County Conservation District, will provide information on constructing a rain garden. In addition, Laurel Oswalt, Dover Township's Manager will be speaking about Dover's 'adopt a road, stream and right-of-way' project, a wonderful service activity for churches, scouts and high school students.

We hope to begin construction for a rain garden in front of the Carousel building. The plan is then to have the rain garden finished and growing for the next spring seminar, so the people attending the seminar will see the ease of construction and maintenance for a rain garden.

HEMLER ANIMAL CONTROL SERVICE



We'd like to take this opportunity to wish everyone a very happy and healthy Holiday Season.

Just a reminder that 2013 York County Dog licenses will be available near the first week of December. We've always put the license on a color coordinated collar and placed in our dog's Christmas stocking!

As a precautionary note, please do not feed and encourage outdoor cats. York County has a fairly high number of raccoons that have tested positive for rabies. Outdoor cats compete with wildlife for survival. For everyone's safety and also to keep the feral cat population in check, use a humane trap and take the cats to the SPCA. *Hoping for another mild winter!*

SHILOH GARDEN CLUB

Hoping everyone had a wonderful Holiday Season and another year has come and gone. The Shiloh Garden Club has it's new quarter schedule.

On January 24th, 2013 **NAPKIN FOLDING** - Members, a team, or individuals will be learning how to fold napkins. We are to bring our own place settings. It will be exciting to see all the designs and colors made by the club.

On February 28th, 2013 **DESIGN CHALLENGE** - At this meeting several members will meet the challenge to create a design using similar materials and containers unknown to them prior to the program. This should be a very different creative challenge.

On March 28, 2013 **THE STORY OF AMERICA'S GREAT SEEDHOUSE** - The speaker of this meeting will be Barbara Melera, President and CEO of the D.Landreth Seed Company. The story will begin in 1789 with the first seeds sold in America through the 21st century. This program should be very historical and interesting.

All of our meetings are held at 10:45 on the fourth Thursday of every month at the Dover Community Center on Davidsburg Road. *Come and enjoy the fun and we would love to have new members join our club.*

Thanks a lot, Cheryl Everhart, Publicity Chairman (292-6885)



Sharing Christ's love by meeting human needs.

New Hope Ministries is a community based Christian social service agency which provides assistance to at risk and in crisis individuals and families. New Hope Ministries shows the love and hope of Christ by serving our neighbors in times of need and supporting their efforts toward stability. Our Dover Center is located at 1836 Industrial Court Dover, PA 17315. Our contact information is 292-3441 www.nhm-pa.org.

- The Dover community is a huge supporter of New Hope Ministries! Thank you for your continued dedication to our agency. We could not continue to serve the people in need in your community without the support of the churches, civic groups, municipalities, businesses, schools, individuals and other groups that support our agency.

Our Shelves are Bare! We are out of laundry detergent, cleaning supplies, toilet paper, diapers (sizes 3, 4, 5) and deodorant. We also need, shampoo, conditioner, bath soap, toothpaste, tissues, dish detergent, paper towels and diapers sizes 1 and 2. Donations can be dropped off at the center Monday through Friday from 9:00 a.m. to 4:00 p.m.

Spring Challenge During March and April!

Our annual Spring Challenge is during March and April. Every donation (cash and food) that New Hope receives through April 30th will be matched with a proportionate share of a Million Challenge Grant offered through The Feinstein Foundation. Whether financial support or food, your gift will bless and impact the lives of the more than 6,600 people we help every year.



A Benefit For New Hope Ministries

Sunday, April 21, 2013

Kettnerman Park, Dover

Form a team of friends, your CMC group, church group or family! For more information, visit our website at www.nhm-pa.org

UNION FIRE AND HOSE CO. #1

30 East Canal St
Dover Pa. 17315
Phone # (717) 292-1493
Fax# (717) 292 3521



Check out our new web site www.unionfireandhose.com

EVENTS:

- Bingo:** Every Monday night starting @ 6:45pm.
- Public Suppers:** Serving Baked Turkey pie and Boiled Beef pot pie - serving starts at 3:30 p.m.
- January 26th
 - February 23rd
 - March 23rd
- Lottery Drawing:** Based on the evening daily number - January & March
Interested in tickets, please contact Andrew Kroft @ 873-2416
- Chocolate Bingo:** Sunday, March 17th - doors open at noon - check our website for more information
- 300 Club:** May 4th tickets go on sale in February - check our website for information.



Join Heritage Members and Friends for a
**TRIP TO SAVANNAH, JEKYLL ISLAND
AND BEAUFORT, SC.**

7 Days, 6 Nights - April 21-27, 2013
\$525 per person (double occupancy)
\$75 due w/reservation – Final
payment due 2/13/13.

Call 292-7471 to request a detailed itinerary.

Check out what's happening at Heritage Senior Center for Dover Community residents age 60 and over. Stop in Mon-Fri, 8am-3pm and get acquainted!

We offer a hot lunch at Noon each day. Activities include cards, Wii games, Bingo, Exercise Classes, Bible Study, Knitting Group, Book Discussion Group, Day/Overnight Trips, Computer Lab, German Class, Health/Nutrition Education and lots of fun and socialization.

Volunteer for Our Meals-on-Wheels program that distributes meals to homebound seniors Mon-Wed-Fri. *Call Marci at 292-7471 for details* – you can drive as little or as often as your schedule permits.

HERITAGE SENIOR CENTER

3700 Davidsburg Rd., Dover, PA 17315
Ph: 717/292-7471 www.heritagesrcenter.org



Community Appeal . . . In light of the current reduction in funding for Sr. Centers in Pennsylvania, we are appealing to community businesses, organizations and individuals for donations to help offset this deficit. We are hopeful that the Dover Community will respond to our appeal so that we can continue to offer a full range of services to the Sr. Citizens in the Dover area.

Please contact Emma Crossley, Exec. Director or Gloria Eimerbrink, Asst. Director at 292-7471 to discuss how you can help insure that Heritage Sr. Center's services are available in your community.

WINTER 2013 EVENTS

Monday Evening Story Time

Mondays at 7:00 p.m.

This evening session is geared for families with children of all ages. Join the fun as one of our volunteer shares her love for books! Gather the gang and discover books sure to become favorites! No registration needed, simply stop in!



Toddler Time

Tuesdays, 10 a.m. or Thursdays 11 a.m.

These sessions are geared for 2 and 3 year old children and an adult. Join Miss Lisa as she shares books, rhymes, music, movement activities, finger-plays, crafts and more! Toddler Time has two different sessions – select the one that suits you the best. Winter sessions begin on January 22 and 24.

Baby Time

Tuesdays 11 a.m. or Thursdays 10 a.m.



These sessions are geared for parent and child from birth to 2 years of age. Introduce your baby to literature and the library as Miss Lisa shares favorite books, knee jogs, songs, nursery rhymes and more. This is a great time for social interaction for both baby and parents. Grandparents, caregivers and siblings are welcome, too. Winter sessions begin on January 22 and 24.

Preschool Story Time

Tuesdays 1:00 p.m. or Thursdays 1:00 p.m.

These sessions are geared for children ages 4, 5 and 6. Parents may join us or browse in the library. Join Miss Karen as she shares books, music, action games, and more! Preschool Story Time has two different sessions, select one that suits you. Winter sessions begin on January 22 and 24.

Tales for Tails - Second Saturday

This session is geared for beginning readers, reluctant readers, readers who need some practice and readers who love dogs! Join Kitsy, Crissy, and Cosworth to read a book or two. Kitsy, Crissy, and Cosworth are certified Therapy Dogs who love to listen to stories. Sign-up please, but drop-ins welcome if there is time. Program held 2nd Saturday most months.

Super Saturday - Teddy Bear's Picnic

Saturday, February 9, 10:00 a.m. – noon

Bring a favorite fuzzy friend or find a critter hiding in the library “woods” as we go on a trek through the stacks to get to our picnic site. Stories, songs, craft, and snack round out the morning. Registration requested so that we can adequately plan for the event. Free event!



Super Saturday – Civil War Saturday

Saturday, March 9, 10:00 a.m. – noon

Explore the adventures of some very brave children during the Civil War battle at Gettysburg in July 1863. We will learn about the clothes they wore, chores, schoolwork, and enjoy a typical snack from the time. Registration requested so that we can adequately plan for the event. Free event!

Winter Reading Challenge children from birth – age 10

February 14 - March 16



Pick up a copy of the Winter Reading Challenge at the library beginning February 14th and read 26 different books. Find an author with the beginning letter for each letter of the alphabet. If you can't find a beginning letter, fill in the author with that letter somewhere in his name. Ex. Arnold Lobel is ok to use for “A” or “L”. A cuddly prize will be awarded at the end. Enjoy the challenge!

ADULT PROGRAMS:

Knitting Group - Wednesdays, 6:00 p.m.

Knit, chat, share, learn, and get out of the house... who could ask for more? Check at the main desk to see if there is a special project this month or bring in your current project. All knitters welcome. Group meets each Wednesday of the month.

Christian Fiction Book Discussion Group

3rd Monday Each Month, 7:00 p.m.

This group meets the 3rd Monday each month and is growing but new members are still welcome. Visit the display, borrow and read the book then join in the discussion. For more information or to register call the library at 292-6814.



Book Discussion Group for Adults

Last Monday of each month, 7:00 p.m.

The Book Discussion Group is on hiatus at press time. For more information, visit the library or call 292-6814.

GED Classes

Mondays & Wednesdays 2:00 p.m. to 5:00 p.m.

GED classes are ongoing for adults. Call 741-0820 ex 4315 to register.

Planning for Social Security

Call the library at 292-6814 for date and time.

SPORTS REGISTRATIONS



EAGLE LACROSSE will be holding final registrations for the 2013 spring season on January 15th, 2013 from 6:30-8:30 PM in the Dover Community Center Senior Room located at 3700 Davidsburg Rd (or however you want to word it). The program is open to boys ages 7-15 and girls in grades 3rd-8th. If new to the program, boys must supply a birth certificate copy. *Please contact dover.lacrosse@comcast.net with any questions or visit www.htosports.com/delc for more information.*

DOVER AREA ATHLETIC ASSOCIATION - DOVER BASEBALL & SOFTBALL REGISTRATIONS

www.doverathletics.com online

Ongoing from Nov. 1, 2012- Jan. 13, 2013

Any questions contact Crystal Smith at CSHairstylist@comcast.net or 717-767-8934



Over 30 Basketball



This is a great opportunity for young men over 30 years of age to get some exercise during the winter months and also enjoy some pick up basketball! Any questions please call the township at 292-3634.

January 15 – April 30, 2013

Tuesday Evenings from 7:00 p.m. - 9:00 p.m.

\$1.00 per night

North Salem Elementary School Gym

11th Anniversary of Dover Township Groundhog Day!!

GROUNDHOG DAY

Saturday February 2nd, 2013

Schedule of events:



PROGNOSTICATION

- 7:00 a.m. – at the Log House (Dover Community Park 2481 W. Canal Rd)
- Receive a free ticket to an All-U-Can-Eat Pancake Breakfast immediately following the prognostication at the Dover Community Building (3700 Davidsburg Rd.)

ALL YOU CAN EAT PANCAKE BREAKFAST

- 8:00 a.m. - 11:00 a.m. - Dover Community Building (3700 Davidsburg Road)

ADVANCE TICKET COST:

Adult\$5.00
12 – 3 yrs old\$3.00
2- underFree

TICKETS AT DOOR

Adult\$8.00
12 - 3 yrs old\$5.00
2 - underFree

Dover Township's 1ST FISHING & HUNTING FLEA MARKET

Dover Township Recreation is hosting their **First Fishing and Hunting Flea Market**. It is on **Saturday, February 16, 2013** from 8 am to 4 pm at Dover Community Building, 3700 Davidsburg Rd. There will be many vendors selling fishing and hunting gear (no guns or other weapons allowed). Stock up on supplies for the upcoming fishing and hunting seasons. Concessions will be provided by Heritage Senior Center.

Sign up now to reserve your space for the Fishing Flea Market in Dover Township! Table prices are \$15 for each 8 foot table space if payment is received by February 1st, otherwise tables will be \$20. You will have two chairs and a table per space. **NO GUNS OR WEAPONS ALLOWED!** Sign up early to ensure a space! Boat spaces are available outside for \$10 a space. Please contact us about space sizes for your boat.



Find more information and print out a registration form at www.dovertownship.org or contact Kristal Kennedy at 717-292-3634.

FITNESS PROGRAMS

ZUMBA Toning

When: Wednesday's from 7:00 p.m. - 7:45 p.m.
Where: Community Building; 3700 Davidsburg Rd
Cost: 1 Class a week (12 classes) 12 weeks- \$45 resident/ \$50 non-resident
Class is limited to 20 participants / Must sign up at Township Building



ZUMBA

Zumba is a great workout and is a lot of fun! Don't worry if you are a beginner, our instructor will walk you through the steps. Come out see what the ZUMBA craze is all about!!

Evening class schedule:

Monday 5:00-6:00 p.m. & 6:00-7:00 p.m. • Wednesday 6:00-7:00 p.m. • Thursday 6:00-7:00 p.m.

Where: Community Building; 3700 Davidsburg Rd

Cost - Punch cards:

- ~ 1 Class a week (12 classes) for 2 months- \$36 resident/ \$40 non-resident
- ~ 2 Classes a week (16 classes) for 2 months- \$48 resident / \$52 non-resident
- ~ 3 Classes a week (24 classes) for 2 months- \$72 resident/ \$78 non-resident



Morning- Keep it Fit!: This class is designed to strengthen your body and tone muscles. The class begins with no impact aerobics to strengthen your heart and warm up your body. We then conclude with muscle conditioning exercises and stretches. We use hand weights, stability balls, bands and more! There is something for everyone and you are encouraged to work at your own fitness level. Class is held at the Community Building.

Cost - Punch cards:

- ~ 1 Class a week (12 classes) for 2 months- \$36 resident/ \$40 non-resident
- ~ 2 Classes a week (16 classes) for 2 months- \$48 resident / \$52 non-resident
- ~ 3 Classes a week (24 classes) for 2 months- \$72 resident/ \$78 non-resident

Classes: Monday & Wednesday 9:45 a.m. – 11:00 a.m. and Friday- 10:00 a.m. to 11:15 a.m.

YOGA

Tuesday & Thursday

Gentle YOGA
5:30 p.m. to 6:30 p.m.

Intermediate YOGA:
6:45 p.m. to 7:45 p.m.

Class held at the Dover Township Building.

- ~ 1 Class a week (12 classes) 2 months- \$45 resident/ \$50 non-resident
- ~ 2 Classes a week (16 classes) 2 months- \$60 resident / \$65 non-resident
- ~ 3 Classes a week (24 classes) 2 months- \$90 resident/ \$95 non-resident

Saturday Morning YOGA

Saturday Mornings – 8:30 to 9:30 AM
At the Dover Township Building, 2480 W. Canal Road

To register for any programs, please stop by the Dover Township offices between the hours of 8am – 4:30pm, located at 2480 W. Canal Rd.

Any questions about any programs can be directed to Kristal Kennedy at 292-3634 or visit the Dover Township website for more information: www.dovertownship.org





EASTER EGG HUNT

SATURDAY, March 23, 2013

Lehr Park- 3700 Davidsburg Rd.

Ages 0-2 will hunt on field 1 at 10:00 am

Ages 3-4 will hunt on field 2 at 10:05 am

Ages 5-6 will hunt on field 3 at 10:10 am

Ages 7-9 will hunt on field 4 at 10:15 am

****Refreshments will be served. Please bring your own Easter Basket to collect your eggs.
In case of inclement weather, the egg hunt will be inside the Community Building.**

DOVER TOWNSHIP BUS TRIPS FOR 2013

Washington DC Cherry Blossom

April 6, 2013

\$35 Resident • \$45 Non resident
8:00 a.m. Departure • 6:00 p.m. Return



New York City

June 15, 2013

\$40 resident • \$50 non-resident

December 7, 2013

\$40 resident • \$50 non-resident

6:00 a.m. departure - 6 p.m. Return

Overnight Trip!! Chicago, Illinois

June 23 - 29, 2013 (7 days, 6 nights)

\$579 per person/double occupancy

Depart from Rexroth Park
Wrightsville, PA at 8:00 a.m.
Contact Tim Smith (East York
Recreation)- 717-246-8155



Ocean City, MD SunFest

September 21, 2013

\$35 resident • \$45 Non-resident
6 a.m. departure- 6 p.m. Return



NEW Autumn Timber Festival Shawnee Mountain Ski Resort

October 12, 2013

\$40 Resident • \$50 Non-resident

****Price includes ticket to festival****

8:00 a.m. departure - 6:00 p.m. Return

*Please call Kristal Kennedy for more information at 292-3634. You need to fill out a registration form and bring payment to Dover Township Building to be registered for the bus trips. **There is a two week cancellation period prior to the trip. No refunds will be given after that two week period leading up to the departure date.***

2nd Annual Dover Recreation Yard Sale!!

May 18th, 2013 from 8:00 a.m.-1:00 p.m.

**Old Mid-Atlantic Golf Course- 2351 Municipal Road
(Behind the Dover Township Building)**

Please stop at the township building to pick up a registration form or check our website www.dovertownship.org for more information. 1 space is \$10 for yard sale items, \$20 for vendors/ home businesses. The spaces are 10 x10. You can purchase up to 3 spaces, no refunds. You **MUST** bring your own table and chairs if needed. Pop-up tents are also allowed but must fit in a 10x10 space. Forms must be turned in by May 10th, no day of registration!! **RAIN or SHINE!!** 6 am setup start time.





DOVER TOWNSHIP VOLUNTEER FIRE DEPARTMENT

With the arrival of fall, the Dover Township Volunteer Fire Department would like to remind residents of some Winter Fire Safety measures.

More than one-third of Americans use fireplaces, wood stoves and other fuel-fired appliances as primary heat sources in their homes. Unfortunately, many people are unaware of the fire risks when heating with wood and solid fuels. Heating fires account for 36% of residential home fires in rural areas every year. Often these fires are due to creosote buildup in chimneys and stovepipes. All home heating systems require regular maintenance to function safely and efficiently.

The Dover Township Volunteer Fire Department and the United States Fire Administration (USFA) encourages you to practice the following fire safety steps to keep those home fires safely burning. Remember, fire safety is your personal responsibility ...Fire Stops With You!

Keep Fireplaces and Wood Stoves Clean

- Have your chimney or wood stove inspected and cleaned annually by a certified chimney specialist.
- Clear the area around the hearth of debris, decorations and flammable materials.
- Leave glass doors open while burning a fire. Leaving the doors open ensures that the fire receives enough air to ensure complete combustion and keeps creosote from building up in the chimney.
- Close glass doors when the fire is out to keep air from the chimney opening from getting into the room. Most glass fireplace doors have a metal mesh screen which should be closed when the glass doors are open. This mesh screen helps keep embers from getting out of the fireplace area.
- Always use a metal mesh screen with fireplaces that do not have a glass fireplace door.
- Install stovepipe thermometers to help monitor flue temperatures.
- Keep air inlets on wood stoves open, and never restrict air supply to fireplaces. Otherwise you may cause creosote buildup that could lead to a chimney fire.
- Use fire-resistant materials on walls around wood stoves.
- Don't wear loose-fitting clothes near any open flame.
- Store cooled ashes in a tightly sealed metal container outside the home.

Safely Burn Fuels

- Never use flammable liquids to start a fire.
- Use only seasoned hardwood. Soft, moist wood accelerates creosote buildup.
- Build small fires that burn completely and produce less smoke.
- Never burn cardboard boxes, trash or debris in your fireplace or wood stove.
- When building a fire, place logs at the rear of the fireplace on an adequate supporting grate.
- Never leave a fire in the fireplace unattended. Extinguish the fire before going to bed or leaving the house.
- Soak hot ashes in water and place them in a metal container outside your home.

Protect the Outside of Your Home

- Stack firewood outdoors at least 30 feet away from your home.
- Keep the roof clear of leaves, pine needles and other debris.
- Cover the chimney with a mesh screen spark arrester.
- Remove branches hanging above the chimney, flues or vents.

Protect the Inside of Your Home

- Install smoke alarms on every level of your home and inside and outside of sleeping areas. Test them monthly and change the batteries at least once a year. Consider installing the new long life smoke alarms.
- Remember to practice a home escape plan frequently with your family.
- Provide proper venting systems for all heating equipment.
- Extend all vent pipes at least three feet above the roof.

Electric Space Heaters

- Buy only heaters evaluated by a nationally recognized laboratory, such as Underwriters Laboratories (UL). Check to make sure it has a thermostat control mechanism, and will switch off automatically if the heater falls over. Heaters are not dryers or tables; don't dry clothes or store objects on top of your heater. Space heaters need space; keep combustibles at least three feet away from each heater. Always unplug your electric space heater when not in use.

Kerosene Heaters

- Buy only heaters evaluated by a nationally recognized laboratory, such as Underwriters Laboratories (UL), and check with your local building department on the legality of kerosene heater use in your community.
- Never fill your heater with gasoline or camp stove fuel; both flare-up easily. Only use crystal clear K-1 kerosene. Never overfill any portable heater. Use the kerosene heater in a well ventilated room.

Yours in Fire Safety . . . Chief Jansen

The Dover Township Volunteer Fire Department's Auxiliary meets the last Wednesday of every month at 7:00 p.m. at the fire department on Davidsburg Road. A dance will be held on Saturday, March 9, 2013 featuring the band "Love Haters". Please call 292-5633 for tickets that will be available in January.

We Recycle

ACCEPTABLE ITEMS TO RECYCLE

METAL:

- Aluminum beverage cans
- Steel food and beverage cans & aerosol cans

GLASS:

- Clear, brown & green glass food and beverage containers

PLASTICS:

- #1 - #7 containers & bottles with necks smaller than their bases

PAPER, PAPERBOARD, & CARDBOARD:

- All sizes of cardboard boxes
- Pizza boxes
- Food boxes (i.e. cereal & Jello boxes)
- EMPTY paper towel & toilet paper rolls
- Paperboard packaging (i.e. tissue boxes)
- Office paper (any color)
- Shredded paper (in clear plastic bags please)
- Newspapers & inserts
- Magazines, catalogs & brochures
- Envelopes & junk mail
- Paper bags
- Phone books & other soft cover books



HOW TO PREPARE RECYCLABLES

METAL CANS, GLASS & PLASTICS

- Remove caps/lids
- Rinse thoroughly
- It is okay to leave on labels & neck rings

PAPER, PAPERBOARD & CARDBOARD

- Remove all packaging (Styrofoam, peanuts, plastic, bubble wrap, plastic liners, etc.)
- Flatten ALL boxes/cardboard
- Bundle all cardboard that does not fit into the recycling bin
- Cover loose paper with heavier containers to prevent it from blowing away
- Check weather forecast: If the forecast calls for high winds or rain, keep your recyclables inside until the following week if possible. Wet paper products are difficult to process.

UNACCEPTABLE ITEMS TO RECYCLE

- | | | |
|---|--|--|
| <ul style="list-style-type: none"> • NEEDLES (do not place used needles with recycling! This is a serious health hazard to everyone) • Plastic tubs, cups & trays • Broken glass • Windows, mirrors, ceramics • Drinking glasses | <ul style="list-style-type: none"> • Aluminum foil • Scrap metal • Tupperware or disposable plastic containers • Plastic tableware (knives, forks, etc) • Plastic grocery bags • Light bulbs | <ul style="list-style-type: none"> • All solvent, oil & chemical containers • Food soiled material • Paperboard juice & milk containers • Soaked and/or wet papers or cardboard • Plastic food wrappers • Used paper towels or tissues |
|---|--|--|

SNOW EMERGENCY ROUTES

Clearview Road (entire length)
 North Salem Church Road (entire length)
 Schoolhouse Road (N Salem Church to Harmony Grove)
 Salmon Run Road (entire length)
 Emig Mill Road (entire length)
 Baker Road (entire length)
 Taxville Road (entire length)
 Milky Way Road (entire length)
 Sundial Road (entire length)
 Solar Drive (entire length)
 Glen Hollow Drive (entire length)
 Falcon Lane (entire length)
 Sunshine Drive (entire length)



Weeping Willow Lane (entire length)
 Old Carlisle Road (entire length)
 Park Street (entire length)
 Hilton Avenue (entire length)
 Poplars Road (entire length)
 Fox Run Road (Canal to Cardinal)
 Conewago Road (Carlisle to Rohlers Church)
 Rohlers Church Road (Conewago to Bull)
 Spectrum Road (entire length)
 Rainbow Circle (entire length)
 Timberlyn Drive (entire length)
 Blue Jay Drive (entire length)
 Long Meadow Drive (entire length)
 Condor Lane (entire length)

NOTE: The above roads have been designated as snow emergency routes. No person shall operate a motor vehicle on the designated roads in a manner that may cause the vehicle to become stalled either by not being properly equipped with chains or effective snow tires or running out of gas. The term motor vehicles also include, but are not limited to, snowmobiles, trailers, three-wheeled and four-wheeled vehicles. If a snow emergency is declared, parking on these streets is prohibited until the emergency is declared terminated.

SNOW REMOVAL SEASON



If a storm is anticipated, remove vehicles from the roadside shoulders. This allows plows to clear the area the first time through, making return trips unnecessary.



Do not shovel snow into the road or have your driveway plowed into the road. This can cause a serious traffic hazard.



If possible, wait until the road has been plowed before cleaning out the end of your driveway. There is no practical way to plow the road without depositing snow into your driveway.



Plow operators are urged to take precautions to avoid hitting mailbox posts. Experience has shown that reduced visibility during a storm makes it difficult for a driver to see a post in time to avoid striking it or pushing it over with plowed snow. Any installation within the right-of-way, including a mailbox is placed there at the owner's risk.



Do not be misled by trucks running with their plows raised. They may be returning for fuel or they may be headed to another area. The municipality may not be responsible for all roads in the area. Some roads may be maintained by the state, some by the county, and some roads may be private (as in developments where roads have not yet been dedicated)



Just a reminder with a snow fall of 4-6 inches, it takes approximately 15 HOURS to plow all the township roads at least once.

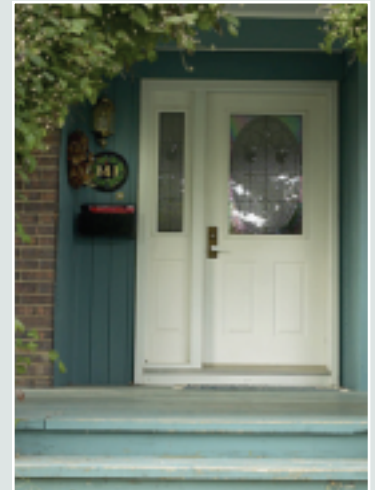
*Can we find you in an **EMERGENCY?***

In an emergency, police, fire and rescue workers depend on house numbers to find YOU as quickly as possible. Finding your home - especially at night - can be challenging if address numbers are unreadable, hidden, unlighted or have missing numbers and may delay emergency responders from getting to you as quickly as possible.

Are your house numbers visible from the street? Are they set on a background of contrasting color? If your house is hidden from the street, are your numbers attached to a visible fence, mailbox or gate? Is your mobile home identified with your house number? If you live on a corner, does your house number face the street named in your address?

If you've answered "no" to any of these questions, please follow the guidelines below to make sure your house number is easy to read:

1. Numbers must be visible from the street. Existing residential home numbering should be at least 3 1/2 inches high.
2. Numbers should be placed on a contrasting background, with a reflective coating on the numbers for easy visibility at night.
3. Repair or replace aging address number placards, especially on mailboxes that are a distance from the front of the residence.
4. Prune any bushes, tree limbs or other growth that has covered your house numbers.
5. Numbers should be placed on or beside the front door. If your door is not easily seen from the street, put the numbers on a post, fence or tree at the driveway entrance so they can be clearly seen from the street. In addition to numbers on the front door of your house, if you have a rural-style mailbox, reflective and contrasting numbers should be placed on both sides of the box so they can be seen by an emergency vehicle approaching from either direction.



Submitted by Chief Glenn Jansen

WATER AND SEWER

Commonly Asked Questions Answered

1. **QUESTION:** *How do I receive notifications if there is a water or sewer emergency, or any Township emergency notifications?*

ANSWER: Please provide the Township office with contact information such as telephone number and mailing address. We recently made public announcements through our auto dialer system and were told by several residents that their neighbors got the call but they did not. The reason: We did not have your contact information. PLEASE make sure you get the next notification should there be one, by providing us with your telephone number.



2. **QUESTION:** *What payment options do we offer?*

ANSWER: You may pay by mail (no cash please), in the office (open Monday thru Friday from 8:00 am to 4:30 pm), use our drop slot (conveniently located in the vestibule area, which is accessible 7 days a week/24 hrs a day), or at the Susquehanna Bank. You may also pay by credit card by visiting our website ONLY www.dovertownship.org. There will be a convenience fee if paying by credit card as we use a third party processor to process the credit card payments for security purposes.

3. **QUESTION:** *Do you add fluoride to the water?*

ANSWER: No, we do not add fluoride to the water.

4. **QUESTION:** *When is my bill scheduled to be mailed?*

ANSWER: If your account number begins with:

- 0 or 1: your bill months are January, April, July and October
- 2 or 6: your bill months are February, May, August and November
- 3: your bill months are March, June, September and December

You should always have your bill by the 5th of these months. If you do not receive your bill by that date, please contact the office for your bill amount due, so you can avoid late fees. Typically your bill will be due on the 15th of the same month, after the due date a penalty will be assessed. Make sure that if you move or are going to be away from home when your bill is scheduled to arrive, that you provide an updated address to us, so that you can receive your bill in a timely manner and avoid being charged a late fee.

5. **QUESTION:** *What is causing my water to be cloudy/brownish in color, or sputtering when I turn it on?*

ANSWER: It is possible we are flushing hydrants or had to turn off the water for a short period to do maintenance. Please try letting the water run for a short period to clear the line. If this does not resolve the issue, please contact our office.

6. **QUESTION:** *Why can't I set up an account in my name if I am renting?*

ANSWER: Dover Township bills property owners only. If your landlord has it in the lease that you are responsible for the water and sewer bills, it will be up to them to contact our office and authorize redirection of the bill. We cannot change the bill based on the tenant notification.

DOVER TOWNSHIP

York County, Pennsylvania

Address:

2480 West Canal Road • Dover, PA 17315

Phone: (717) 292-3634 • **Fax:** (717) 292-1136

E-mail: dovertwp@dovertownship.org

Municipal Office Hours: 8:00am to 4:30pm except Holidays

Laurel Oswalt - Township Manager

DOVER TOWNSHIP BOARD OF SUPERVISORS

Madelyn Shermeyer-Chairperson-Administration, Fire, ICDC

Monica J. Love-Vice Chairperson-Water, MS4 stormwater

Michael G. Husson- Asst Secretary-Sewer & Wastewater, Ambulance Club

Matthew D. Menges-Supervisor- Police

Charles S. Richards- Supervisor-Highways, Recreation & Parks

York County, Pennsylvania



Dover Township would like to thank the businesses that appear in this newsletter and to recognize them each as supporters and cornerstones of our community. For it is with their contributions that this newsletter has been produced at no charge to our residents.



DOVER AREA ANIMAL HOSPITAL

Daniel A. Pike D.V.M.

David W. Pike D.V.M.

Richard D. Greenwalt D.V.M.

Michael R. Burrell D.V.M.

Carrie A. Vigeant D.V.M.

Daniel P. Laucks V.M.D.

Donald C. Sunday D.V.M.

Amy A. Gerhardt D.V.M.



- Small Animals & Farm Animals
- Multi-Pet Discount
- Boarding & Grooming Facility
- Family Owned and Operated

717.292.9669

**5030 Carlisle Road
Dover, PA 17315**

(1 mile North of Dover Square on Rt. 74)



www.doveranimalhospital.com

DOVER TOWNSHIP

2480 West Canal Road
Dover, PA 17315

PRSRT STD
ECRWSS
U.S. POSTAGE
PAID
PERMIT NO. 609



This Community Newsletter is produced for the
Dover Township by **Hometown Press**
215.257.1500 • All rights reserved®

To Place An Ad Call Sara Pifer at Hometown Press • 717-395-1634

You would cry too
if you knew what you could have saved.

Rob Stone, President
855-292-2028

*Give us a call today.
We'll put a smile back on your face.*

Commercial & Personal Insurance

- Liability
- Property
- Workers Compensation
- Auto & Home
- Life
- Motorsports



www.covenantcares.com

