

# DOVER TOWNSHIP

*York County, Pennsylvania*



SPRING 2013



## WE NEED YOU! THURSDAY, APRIL 18 COMPOSTING, RAIN GARDENS AND YOU

**WHO:** Dover Township Residents, Community Groups, Youth Organizations, etc.

**WHAT:** Join us for an informative session about how you can help contracot stormwater on your property and in the Dover Community while also improving our water quality! See what it takes to compost and install a rain garden at home. Find out how your community group can partner with the township to clean up our community.

**WHERE:** Dover Township's Brookside Park Carousel Building



**WHEN:** April 18th, 2013 at 6:30 p.m.

**WHY:** Because you care about the community you live in and want to do your part to make it a better place to live! It's up to all of us to work together!

*Sponsored by  
Dover Township & West Manchester Township in  
conjunction with York County Planning Commission  
and York County Conservation District*

Photo: David Hymel, Rain Dog Designs - [www.thisoldhouse.com](http://www.thisoldhouse.com)

### IN THIS ISSUE

Dispose of Unused or  
Expired Medications .....2  
Recycling Guidelines .....3  
Doublecreek Bike Tour &  
Half Marathon/5K .....4  
Union Fire and Hose Co. #1 .....4  
Dover Township Volunteer

Fire Department .....5  
Heritage Senior Center .....5  
Shiloh Garden Club .....6  
New Hope Ministries .....6  
Dover Area Community Library .....7-8  
Dover Sports Organizations .....9  
Summer Concert Series .....9

Y.A.R.D. Track & Field Meet .....9  
Tennis for Kids .....9  
Summer Program for Kids .....10  
Fitness Programs .....11  
Dover Township Bus Trips .....11  
2012 Annual Drinking  
Water Quality Report .....12-13

2480 West Canal Road • Dover, Pennsylvania 17315

[www.dovertownship.org](http://www.dovertownship.org)



4555 Paradise Rd. | Office 717-292-5696  
Dover, PA 17315 | Fax 717-292-5807  
www.hivelylandscapes.com

ARCHITECTURE | ENVIRONMENTAL | TRANSPORTATION

Strengthening Communities  
through Engineering Excellence



The Russell E. Horn Building  
445 West Philadelphia Street | York, PA 17401-3383  
T: (717) 852-1400 | F: (717) 852-1401 | www.bh-ba.com



## DOVER AREA ANIMAL HOSPITAL

Daniel A. Pike D.V.M.

David W. Pike D.V.M.

Richard D. Greenwalt D.V.M.

Michael R. Burrell D.V.M.

Carrie A. Vigeant D.V.M.

Daniel P. Laucks V.M.D.

Donald C. Sunday D.V.M.

Amy A. Gerhardt D.V.M.



- Small Animals & Farm Animals
- Multi-Pet Discount
- Boarding & Grooming Facility
- Family Owned and Operated

**717.292.9669**

**5030 Carlisle Road  
Dover, PA 17315**

(1 mile North of Dover Square on Rt. 74)



www.doveranimalhospital.com

## Stone, Duncan & Linsench, PC *Attorneys & Counselors*

### Nearly All Areas of Law:

Business • Real Estate • Military • Intellectual Property  
Family • Criminal • Bankruptcy • Federal & State Litigation  
Probate & Estate Planning • Motorcycle Accident •  
Nursing Home Malpractice • Immigration • Personal Injury  
Municipal & Zoning • Gas & Oil Law • HOA Law



*The Key to Great Legal Services*

**STONEDUNCAN.COM**  
**717-432-2089**

## Why Not Greenhouses

Container Gardens  
Vegetable Plants  
Annuals  
Herbs

**10%  
DISCOUNT**  
with ad

### HOURS OF OPERATION

April through May  
Mon-Sat: 8 am - 7 pm  
Sunday: 8 am - 5 pm  
June through July  
Closed Tuesdays

4920 Harmony Grove Road  
Dover, PA 17315

717-292-7818

www.whynotgreenhouses.com

## SPANGLER'S HOME CENTER



Annuals • Perennials  
Vegetable Plants  
Soil • Mulch  
Stone • Pavers

SEEDERS • AERATORS • HAND POWER TOOLS  
TILLERS • AUGERS • CHAIN SAWS  
WOOD CHIPPERS • STUMP GRINDER  
DETHATCHER • LOG SPLITTERS

### SPANGLER'S HOME CENTER & RENTAL

4072 Carlisle Road • Dover, PA 17315-3508

292-6055 voice / 292-7476 fax

Spanglershomecenter@hotmail.com

**STORE HOURS:** Monday thru Friday 7:30 a.m. to 8:30 p.m.  
Saturdays 7:30 a.m. to 7:00 p.m. • Sunday 9:00 a.m. to 5:00 p.m.  
**RENTAL STORE HOURS:** Monday thru Friday 7:00 a.m. to 6:00 p.m.  
Saturday 7:00 a.m. to 3:00 p.m. • Closed Sunday





Any girl from K-12 grade and adults that would like to join Girl Scouts to have fun, learn, and experience new things come sign up today! Girl Scouts Spring Registration dates are April 22 at Palasta 6:00-8:00 and April 30 at the Dover Community Building in the scout room from 6:00-8:00. Please bring cash or check for the fee of \$15.00 to sign up.

Any questions please call Elaine Kroft 292-1392.



## Dispose of unused or expired medications

At the Northern York County Regional Police Department  
1445 East Canal Road • Dover, PA 17315

**FREE, Secure, & Confidential**  
Monday - Friday: 8:00 a.m. to 4:00 p.m.



### ACCEPTED

Prescriptions • Over-the-Counter Medications • Vitamins • Samples  
Pet Medications • Ointments • Liquid Medications in Leak-Proof Containers

### NOT ACCEPTED

Needles (Sharps) • Thermometers • Bloody or Infectious Waste • Hydrogen Peroxide  
Aerosol Cans • Medications from Businesses, Clinics, or Long-Term Facilities

**PLEASE CALL 717.292.3647 FOR MORE INFORMATION**

*This program is made possible by the York County Solid Waste Authority*



**York County  
Solid Waste Authority**

## LIVE THE *Luxury Life!*



## Laurel Manor

• CONDOMINIUMS •

Custom built by Michael Barshinger Builder Developer. Conveniently located to many amenities, and still tucked away in a natural paradise on South Salem Church Road in Dover. Come visit **LAUREL MANOR CONDOMINIUMS** to see the quality & elegance you deserve in luxury ranch condominium living.



Personal Tours are by appointment to give you the time necessary to see just how wonderful your new condominium will be. **CONTACT US TODAY!**

**FROM SOUTH** - Rt. 74 North | Left onto Darrsburg Road. At traffic light make a right onto South Salem Church Road. Development is 1.2 mile on left hand side.

**FROM NORTH** - Rt. 74 South to Dover square. Turn right onto Canal Road. Make left turn onto South Salem Church Road. Development is 1.2 mile on the right hand side.

Luxury Condominium  
Products Supplied By



**717-852-8828 | [www.michaelbarshingerbd.com](http://www.michaelbarshingerbd.com)**

# RECYCLING GUIDELINES

## ACCEPTABLE ITEMS:

- Aluminum food and beverage containers
- Glass food and beverage containers-brown, clear, or green
- Bi-Metal, Steel and Aerosol cans
- PET Plastic containers with the symbol #1 narrow neck containers only
- HDPE Plastic containers with the symbol #2 narrow neck containers such as milk and water bottles, detergent, shampoo, bleach bottles etc without caps
- Plastics with symbols #3,#4,#5,#6 #7 narrow and screw top containers
- Newsprint
- Cardboard-flattened in 2' x 2' bundles (may be placed in recycling bin along with other recycling)
- Residential mixed paper (Junk Mail, magazines, glossies, telephone books, printer/copier paper)
- Cereal Boxes



## NON-ACCEPTABLE ITEMS:

- Window or Auto glass, drinking glasses, mirrors, light bulbs, ceramic, porcelain, microwave trays, glass cookware/bake ware
- Unnumbered plastic items
- Plastic Bags
- Salad/Deli containers, Plastic food tubs
- Household items such as cooking pots
- Batteries
- Cardboard/Paper with wax coating or liners
- Scrap metal, siding

*Penn Waste will take ONE large item once a week with your regular trash pickup. If you need to put out more bags than your limit you can buy bags at the Township Building. The price of a bag is \$4.00.*



### BRUSH COLLECTION FOR SPRING OF 2013

will begin April 15 2013, and will continue until May 10 2013

### FALL BRUSH COLLECTION

will begin September 16, 2013 and will continue until October 25, 2013



### FALL LEAF COLLECTION

will begin November 12, 2013 and will continue until December 20, 2013

## CHILDREN'S HOME OF YORK

Business Card Size Ad  
Waiting for Artwork



Dover Township would like to thank the businesses that appear in this newsletter and to recognize them each as supporters and cornerstones of our community. For it is with their contributions that this newsletter has been produced at no charge to our residents.



## Double Creek Bike Tour & Half Marathon/5k - Quick Info

- Saturday, June 15, 2013
- Start and Finish at North Salem Elementary
- Half Marathon starts 7:00am
- Bike Tour starts 7:30 a.m. - 9:00 a.m.
- 5k starts 9:30 a.m.
- 1/2 mile Fun Run 10:00 a.m.

On Saturday, June 15th, 2013 WellSpan Health will be sponsoring the Double Creek Tour and Run in Dover. This is the 10th year we have conducted the event in Dover and the fifth year that we have requested road closures. The race will start at the North Salem Elementary School and wind through the country roads surrounding the Dover area, passing the scenic Conewago, Salmon Run and Bermudian Creeks from which the race gets its name. The first event, the Half Marathon run, will start at 7:00 AM. At 7:30, the 63 and 30 mile bike tour will begin. At 9:30, the 5K run will start and at 10:00 is the Fun Run.

Since safety is a top priority, once again we are asking that the Northern Regional Police and the Dover Fire Police support our event to help with traffic control and support proposed road closures. Also as a safety precaution, we would again like to send an informational letter to race route residents to make them aware of the event and ask that they please keep their dogs tied or indoors between 7 AM and Noon on the day of the race. Last year the Double Creek event had grown to over 900 participants. The proceeds from the event benefit the Healthy Community Pharmacy program. This program provides prescription for those people who might not otherwise be able to afford it. There are currently over 200 residents in the Dover area alone that take advantage of the Healthy Community Pharmacy.

### MAP LEGEND

**Yellow** = Runners and Bikers share road (Proposed road closure)

**CM-#** = Where DCHM/Sk course marshals will be positioned (there may be more). Additional uniformed traffic control will be at "CM-1", "CM-2", "CM-3", "CM-8", "CM-9", and "CM-10".



## UNION FIRE AND HOSE CO. #1

30 East Canal St • Dover Pa. 17315

Phone # (717) 292-1493 • Fax# (717) 292 3521



Check out our new web site [www.unionfireandhose.com](http://www.unionfireandhose.com)

### EVENTS:

- Bingo:** Every Monday night starting @ 6:45pm.
- Public Suppers:** Serving Baked Turkey pie and Boiled Beef pot pie. Serving starts @ 3:30pm April 27th & June 22nd
- Lottery Drawing:** Based on the evening daily number. April & June  
Interested in tickets, please contact Andrew Kroft @ 292-1392
- Mother Day Flower Sales:** May 10th, 11th, & 12th, 2013
- 300 Club:** May 4th doors opening @ 5:00 eat @ 6:00 contact Cathy Strine @ 873-0385 or Elaine Kroft 292-1392.

SUPPORT OUR FIRE DEPARTMENT AND EARN CASH ON PURCHASES — GO TO [shopunionfireandhose.com](http://shopunionfireandhose.com) SIGN UP, SHOP & SAVE.



# DOVER TOWNSHIP VOLUNTEER FIRE DEPARTMENT



Hello All,

Last year your 100% Volunteer Fire Department responded to a total of 568 calls for service in Dover Township and the surrounding areas. We could not have responded to these without your support and we would like to thank you.

Remember to come out on Friday nights for bingo at the Dover Community center located at 3700-2 Davidsburg Road! The money raised goes directly to help us better keep you safe.

Do you have a group or organization that would like us to visit? Call us at 292-4196 or stop by and schedule a visit to see us and learn about fire safety! We are located at 3700-1 Davidsburg Road directly in front of the Dover area library.

Lastly we would like to remind you of some fire safety.

- Please do not drive thru flood waters. Turn around, don't drown!
- Remember to check your smoke detectors and have them on every floor of your home and in every bedroom.
- Have a fire extinguisher in your kitchen and know how to use them. Make sure that they are fully charged.
- Always have two ways out of your home and set up a meeting place for your family.
- Once out, stay out! Do not go back inside and risk being hurt or worse.

*Like us on facebook at [www.facebook.com/Dover.Township.Fire.Department](http://www.facebook.com/Dover.Township.Fire.Department) or visit our website at [www.dtvfd9.com](http://www.dtvfd9.com) for more updates.*



## UPCOMING EVENTS . . .

### Ham & Cheese Pretzel Sandwich Sale

Place your order (292-7471) by  
April 11 for pick-up on April 19 @ 11am.

### Car Show, Dover High School

May 18th – 8am-1pm

Dover HS students Seth Ahrens and Joe Abate are planning a car show at the high school to benefit Heritage Sr. Center. Check out the cars and stop by our baked goods table.

**York County Sr. Games** – June 17-22



**Check out what's happening at Heritage Senior Center** for Dover Community residents age 60 and over. Stop in Mon-Fri, 8am-3pm and get acquainted!

**We offer a hot lunch at Noon each day.** Activities include cards, Wii games, Bingo, Exercise Classes, Bible Study, Knitting Group, Book Discussion Group, Day/Overnight Trips, Computer Lab, Crafts, Health/Nutrition Education and lots of fun and socialization.

**Volunteer for Our Meals-on-Wheels Program** that distributes meals to homebound seniors Mon-Wed-Fri. Call Marci at 292-7471 for details – you can make a difference in someone's life.

## HERITAGE SENIOR CENTER

3700 Davidsburg Rd., Dover, PA 17315

Ph: 717/292-7471 [www.heritagesrcenter.org](http://www.heritagesrcenter.org)

## Advertise with Heritage . . .

Heritage Sr. Center is currently offering an inexpensive advertising opportunity to local businesses and organizations. For as little as \$50/month (3.5"x 2") your ad can appear in our newsletter and on our web site. Larger ads available – call Gloria or Emma at 292-7471 for more info or to place your ad.

## SHILOH GARDEN CLUB

Spring has arrived and our new programs are up and coming. In March we were involved with the York Garden Show. Some of our members tended the area designated to the Garden Clubs.



In the month of April, we will be displaying garden articles and events at the Dover library. For the month of April our agenda is "The Love of Hosta's." Charles and Donna Seitz opened the Hosta Hideaway Nursery and Gardens in York Springs in 2008. She will bring hostas with her which will be available for purchase.

For the month of May a Garden Tour. We will tour the James Buchanan Home and Gardens in Lancaster County. Lunch will be at a nearby restaurant.

A new election of officers who will be installed in April for a two year term. *All meetings are held at Dover Community Center the fourth Thursday of the month at 10:45 AM.*

Cheryl Everhart, Publicity Chairman



### WALK FOR HOPE - April 21, 2013

Welcome to WALK for Hope 2013!

WALK DATE: Sunday, April 21  
REGISTRATION: 1:30 to 2:00 PM  
START OF WALK: 2:00 PM promptly



DISTANCE: Approximately 5K (3.1 miles) - Contact local center for exact route.

You Can  
Register  
Online for  
The WALK!

This packet contains several pieces of information that should help you raise funds for WALK FOR HOPE.

- **Walker & Team Registration:** You can register online for WALK for Hope by visiting our website at [www.nhm-pa.org](http://www.nhm-pa.org). Look for the link to WALK for Hope, and follow the directions. You may also complete the attached form and return to New Hope. Registering for WALK in advance is greatly appreciated. Consider forming a team this year!
- **Fundraising Tips for Walkers:** Easy ideas on how you can raise funds for Walk for Hope.
- **Walk Sponsor Letters:** Generic letters which you can use to ask people to support your Walk for Hope. Use the blank space at the beginning and end of the letter to personalize your letter.
- **Reply Envelopes:** Available at all our centers, these envelopes are a great way to encourage your donors to support you in the WALK. Be sure to fill in the Walker Name, Team (if applicable), and WALK Site on the inside of the reply envelope.
- **Sponsorship Collection Form:** If you collect a donation from a sponsor directly, you can keep track of these donations with this handy form. Be sure to keep all donations together, and bring them with this form to the Walk, or turn them in prior to the day of the Walk.

If you need additional copies of materials, please visit New Hope online at [www.nhm-pa.org](http://www.nhm-pa.org) or call your local center for assistance. **Thanks so much for Walking for New Hope!**

#### QUICK TIP

Keep a few copies of the letter and reply envelopes with you, even in your car. You never know when you might run into someone who would be a great person to ask for support!

#### STARTING POINTS:

- Dillsburg - Logan Park
- Dover - Ketterman Park
- Mechanicsburg West Shore – Hampden Township Park

#### FOR MORE INFORMATION, CONTACT YOUR LOCAL CENTER:

- Dillsburg: 432-3053
- Dover: 292-3441
- Mechanicsburg West Shore: 766-7333
- Executive Office: 432-2087

# SPRING 2013 EVENTS

## **Monday Evening Story Time: Mondays at 7:00 p.m.**

This evening session is geared for families with children of all ages. Join the fun as one of our volunteer shares her love for books! Gather the gang and discover books sure to become favorites! No registration needed, simply stop in!

## **Toddler Time: Tuesdays, 10:00 a.m. or Thursdays 11:00 a.m.**

These sessions are geared for 2 and 3 year old children and an adult. Join Miss Lisa as she shares books, rhymes, music, movement activities, finger-plays, crafts and more! Toddler Time has two different sessions – select the one that suits you the best. Spring sessions continue through May 14-16, 2013.



## **Baby Time: Tuesdays 11:00 a.m. or Thursdays 10:00 a.m.**

These sessions are geared for parent and child from birth to 2 years of age. Introduce your baby to literature and the library as Miss Lisa share favorite books, knee jogs, songs, nursery rhymes and more. This is a great time for social interaction for both baby and parents. Grandparents, caregivers and siblings are welcome, too. Spring sessions continue through May 14-16, 2013.



## **Preschool Story Time: Tuesdays 1:00 p.m. or Thursdays 1:00 p.m.**

These sessions are geared for children ages 4, 5 and 6. Parents may join us or browse in the library. Join Miss Karen as she shares books, music, action games, and more! Preschool Story Time has two different sessions, select one that suites you. Spring sessions continue through May 14-16, 2013.

## **All About Me: Thursday, April 11 at 1:00 p.m.**

Join the preschool story time group for a special program about healthy habits for a good beginning. All About Me will be a presentation from the Susan Byrnes Health Education Center. Children will create a MyPlate Booklet to help them classify different food items that keep our body healthy.

## **Tales For Tails: Second Saturday**

This session is geared for beginning readers, reluctant readers, readers who need some practice and readers who love dogs! Join Kitsy, Crissy, and Dusti to read a book or two. Kitsy, Crissy, and Dusti are certified Therapy Dogs who love to listen to stories. Sign-up please, but drop-ins welcome if there is time. Program held 2nd Saturday most months.



## **Super Saturday – Bingo for Kids: Saturday, April 13th, 10:00 a.m. – 12 noon**

Play Bingo and try to win books and other prizes. Free event!



## **Super Saturday – Knights and Princesses: Saturday, May 11th, 10:00 a.m. – 12 noon**

Meet the York County Dairy Princess at a special story time, make a sparkly wand, and come dressed up if you like. Registration requested so that we can adequately plan for the event. Free event!

## **Summer Reading Club Highlights: June 1, 2013, 10:00 a.m. - 1:00 p.m.**

Kick-off at Cousler Park, Church and Greenbriar Road, York, Pennsylvania 17404

Sign-up for Summer Reading Club and enjoy crafts and activities with several York County Libraries, including Dover Area Community Library.

## **Wiggly Worm Race: Saturday, June 8th, 10:00 a.m. - 12 noon** - Bring your own crawler or use one of ours.

## **Cy Young, Aesop's Fables: Wednesday, June 12th 1:30 p.m.** - Event held in the Dover Community Center next to the library.

## **Wilderness Survival Skills, Part 1: Thursday, June 13th, 10:00 a.m. – 12 noon**

Instructor Ed Goad will teach an in-depth 4-part series on basic survival tactics. Sessions continue June 13, 20, 27, and July 11. Ages 9 and up. Registration required.





**Dover Area Community Library: Phone (717) 292-6814  
3700-3 Davidsburg Rd., Dover, PA 17315**



**Make your own T-shirt or Pillowcase:** *Thursday, June 13th, 1:00 p.m. – 3:00 p.m. or Friday 10:00 a.m.-12 noon.*

**Tracking Dinosaurs with Jeri Jones:** *Tuesday, June 18th, 10:30 a.m.*

**Matthew Dodd, Songs and Stories from Underground:** *Tuesday, June 25th, 10:30 a.m.*  
Event held in the Dover Community Center next to the library.

**Adult Programs: GED Preparation classes** Each Monday and Wednesday 2:00 p.m. – 5:00 p.m.

**Knitting Group:** *Wednesdays, 6:00 p.m.*

Knit, chat, share, learn, and get out of the house... who could ask for more? Check at the main desk to see if there is a special project this month or bring in your current project. All knitters welcome. Group meets each Wednesday of the month.

**Friday Morning Knitting Group:** *Second Friday, 10:00 a.m.*

Knit, chat, share, learn and get out of the house...who could ask for more? Check at the main desk to see if there is a special project this month or bring in your current project. All knitters are welcome.



**Christian Fiction Book Discussion Group:** *3rd Tuesday Each Month, 7:00 p.m.*

This group meets the 3rd Tuesday each month and is growing but new members are still welcome. Visit the display, borrow and read the book then join in the discussion. For more information or to register, call the library at 292-6814.



**Antique Appraisal Clinic:** *Thursday, April 11th, 5:00 p.m.-8:00 p.m.*

David Cordier of Cordier Antiques will talk about the background, history, and provide a verbal appraisal of your item(s). \$5 donation/registration fee per item (up to 4 items per person). For more information or to register, call the library at 292-6814.

**Maximizing Your Social Security:** *Tuesday, April 16th, 6:00 p.m.*

This is an important message regarding your social security benefits.

Did you know there are 729 ways for a married couple to claim Social Security?

Not making the best choice could cost you up to \$100,000 in lost benefits.

Don't make a costly and irreversible mistake. Seating is extremely limited and is on a first-call, first served basis. To register, call the Dover Library at 717-292-6814 or 717-292-3217.

**Friendly's Family Fun Night:** *Wednesday, April 17th, 5:00 p.m. – 8:00 p.m.*

Enjoy a good meal and 10% of your receipt that evening will benefit the library.

**Spring Plant Sale:** *Saturday, May 25th, 8:00 a.m. – 1:00 p.m.*

Friends of Dover Library have gorgeous plants, bulbs, and shrubs ready to beautify your yard. Come support the library at this annual event. If you have too many plants and wish to donate some, please drop by the library on Friday, 9 a.m. – 12 noon. Either way, you are helping your library to blossom! Thanks!



**Bikers Book It! For York County Branch Libraries:** *Saturday, September 7th, 10:00 a.m.*

Register now for Bikers Book It! For York County Branch Libraries. The event, a Round Robin Poker Run, will be held on Saturday, September 7. Join the Friends of the Branch Libraries with presenting partner, York Motorcycle Club, and enjoy a fun day to support the libraries. Details at Dover Library and 'Like' Biker Book It! Facebook page for updates.



## DOVER SPORTS ORGANIZATIONS



**DOVER AREA ATHLETIC ASSOCIATION** - Online registrations for fall baseball & softball begins June 1, 2013 thru July 14, 2013. First come first serve. [www.doverathletics.com](http://www.doverathletics.com) Please contact Crystal Smith for more information 717-767-8934 [CSHairstylist@comcast.net](mailto:CSHairstylist@comcast.net)

**TRI-TOWN FOOTBALL** - Registration is May 3rd 6-9 pm and May 4 10 am- 2 pm at the Heritage Senior Center, 3700 Davidsburg Rd. You can also register online at [www.tri-townboysclub.com](http://www.tri-townboysclub.com). For more information please contact Cyndie Grove at 717-991-7794 or [cyndiegrove@gmail.com](mailto:cyndiegrove@gmail.com).

**DOVER AREA SOCCER ASSOCIATION** - Registration for fall season will be open from May 1st till June 30th. Please visit [www.doverareasoccer.com](http://www.doverareasoccer.com) to register. For more information please contact Chuck Lambert at 410-507-7224 or Email: [president@doverareasoccer.com](mailto:president@doverareasoccer.com).

**EAGLE LACROSSE CLUB** - For more information please contact Dana Gamble at 717-586-6057. [www.eaglelacrosseclub.com](http://www.eaglelacrosseclub.com) [dover.lacrosse@comcast.net](mailto:dover.lacrosse@comcast.net).

### 2nd Annual Dover Recreation Yard Sale!!

*May 18th, 2013 from 8:00 a.m. to 1:00 p.m.*

*Old Mid-Atlantic Golf Course- 2351 Municipal Rd. (Behind the Dover Township Building)*

Please stop at the Township Building to pick up a registration form or check our website at [www.dovertownship.org](http://www.dovertownship.org) for more information. 1 space is \$10 for yard sale items, \$20 for vendors/ home businesses. The spaces are 10 x 10. You can purchase up to 3 spaces, no refunds. You MUST bring your own table and chairs if needed. Pop-up tents are also allowed but must fit in a 10 x 10 space. Forms must be turned in by May 10th. There is no day of registration permitted!! RAIN or SHINE!! 6 am setup start time.



### Summer Concert Series

Dover Township Recreation is very excited to announce their lineup for the 2013 Summer Concert Series! Our concerts are held at the Dover Community Park, which is located at 2481 W. Canal Road (just across from the Township Building). In the case of bad weather "The show must go on," and it will be at the Community Building located at 3700 Davidsburg Road. ALL proceeds from concession sales will go to a local organization. Come out on a Sunday afternoon with your lawn chair, have a hot dog to support a local organization, and enjoy some great music for free! Yes that's right all the concerts are FREE!!

**DOVER INTERMEDIATE BAND** - Sunday, May 12th, 6 pm - 8 pm  
Dover's Intermediate Band will be performing some wonderful summer classics. Come out and support your local community!

**SHERWOOD COUNTRY** - Sunday, June 9th, 6 pm - 8 pm  
Do you miss the good old days of country? Sherwood Country will help take you back in time and enjoy all the good old sounds of yesterday!

**TALL IN THE SADDLE** - Sunday, July 14th, 6 pm - 8 pm  
We don't have Chili in a bowl but we have Chili in the Band!! Join "Chilibear" and the gang for some good time music!

**THE DOOZEES** - Sunday, August 18th, 6 pm - 8 pm  
The Doozees perform music from the 50's through the 80's in a high-energery experience, rich with harmonies and skilled musicianship. Come and check out this new band to the Dover Area.

### Y.A.R.D. Track & Field Meet

Join our outdoor elementary level track meet where children have fun and are introduced to physical fitness through basic track and field events such as running, jumping and throwing. Youth ages 9-14 are welcome to participate. All interested persons must pre-register by completing an Official Local Entry Form and provide a copy of their birth certificate. Forms will be available at the Dover Township Building. Participants may sign-up for a maximum of three events. Equipment is provided; only exception-must bring own baton for relay races. Youth must wear sneakers and athletic gear; no spikes or jewelry allowed. Please check the Dover Township website for more information or call Kristal at 292-3634.

**DATE & LOCATION: TBD (July 2013)**

**TIME: 5 p.m. Registration - 6 p.m. start time**  
(participants please report to your first event at 5:45 p.m.)



### Tennis For Kids

**FREE Tennis for Kids** program here in Dover Township. Tennis for Kids provides children ages 7-16 with basic tennis instruction. The best part of Tennis for Kids is it is FREE!! Tennis For Kids sessions run 9:00-11:00 AM every Monday, Wednesday and Friday June 24 through July 26, 2013 weather permitting and unless otherwise determined. Dover sites run Monday, Wednesday and Thursday.

Initial registration time is 8:30 am- 9:00 am June 24 at Dover Tennis courts (at Dover High School). However, we will accept children until July 22, 2013. You can print a registration form from the Tennis for Kids website at [www.tennisforkidsyork.com](http://www.tennisforkidsyork.com)



# Coming This Summer!

## WISE KIDS OUTDOOR SUMMER CAMP

**D**o you have kids that love to be outside all summer? Do they love to play in the creeks or learn about ecosystems? Do they love to learn about bugs and animals? Then do we have the camp for you. Your child will explore Brookside Park and all the nature that surrounds it. They will follow a mission for each day that teaches them about nature, weather, and eating healthy. They will come away with a better understanding of how both humans and nature need to live in balance to be healthy. Most importantly, they will get outside and begin to reconnect to the world around them.

**DATES:** July 1st through August 2nd (No camp on July 4th or July 24th)  
**LOCATION:** Brookside Park - 4054 Fox Fun Road, Building 1 the Dance Hall  
**COST:** \$45 for residents and \$65 for Non-residents (Fee includes workbook & backpack)

*There is limited space,  
so be sure to sign up early!!*

## SUMMER PLAYGROUND

**T**his is a great opportunity for the children of Dover to continue to learn and grow with their peers throughout the summer. They will be supervised by an outstanding staff, participate in numerous activities, and have the opportunity to enjoy field trips around the area! New this summer we will be taking a lot more field trips to some fun locations like the Utz Chip Factory, Whitaker Science Center, the Turkey Hill Experience along with bowling and swimming. Registration for the field trips will be taken at camp. More information will be available on our website at [www.dovertownship.org](http://www.dovertownship.org) under Parks and Recreation.

**DATES:** June 24th - August 2nd (Mon- Fri) - (No camp on July 4th or July 24th)  
**TIME:** 9:00 am - 12 Noon  
**COST:** \$40 Residents (for all 6 weeks of camp) • \$60 Non Residents (for all 6 weeks of camp)  
**AGES:** 6-12 year olds (must be 6 yrs old by June 24th)  
**TWO LOCATIONS:** Dover Community Park: 2481 West Canal Rd. • Lehr Park- 3700 Davidsburg Rd

## PRESCHOOL PLAYGROUND

**T**his is a great opportunity for Dover youngsters to learn in a classroom setting and also make new friends! They will be supervised by an outstanding staff and they will be involved in fun activities every day! Each week has a theme and they will play games, sing songs and make a fun craft every day that has to do with that theme.

**DATES:** June 24th – August 1st (Mon- Thurs)  
No preschool on July 4th or July 24th  
**TIME:** Morning, 4-5 yr olds 9 am–10:15 am (Must be 4 by June 24th)  
Morning, 3 yr olds 10:30 am–11:45 am (Must be 3 yrs old by June 24th)  
**LOCATION:** Log House (Dover Community Park- 2481 W. Canal Rd)  
**COST:** \$30 Residents • \$40- Non Residents  
\*\*Notice\*\* Class size is limited to 15 participants.  
Pre-registration is required!!

## SAFETY SCHOOL

**S**afety First!! Let Dover Township help to teach your children safety with our Safety School. Dover Township will host its annual Safety School at the Log House (2481 W. Canal Rd) Monday through Friday 6:30 to 8 pm beginning July 8th and ending July 19th. Registration is open to all children ages 4-6. Class size is limited to 20; therefore, pre-registration is required. Topics will include water safety, fire safety, and bike safety. Also Special Guests will appear! Registration forms can be picked up at the Township Office or on our website.

**DATE:** July 8th through July 19 Mon-Friday  
**TIME:** 6:30 pm to 8 pm  
**LOCATION:** Log House- 2481 W. Canal Rd.  
**COST:** \$20 for Residents • \$30 for Non-residents

**Are you home for the summer and looking for a great opportunity to work with kids?** Then Dover Township Parks and Recreation have a job for you! Contact Kristal Kennedy at 717-292-3634 for more information about becoming a Playground Counselor or Counselor-In-Training (13-15 yrs old) for the Summer Playground or Wise Kids Outdoor!

## Old Fashioned Carnival



**A**re you looking to do something different this summer? Come enjoy an Old Fashioned Carnival at Historic Brookside Park! There will be games to play, a baked goods sale by the Heritage Senior Center, and live music by the Emigsville Band. There will also be a moon bounce, cake walks, penny candy and lots more! Come hungry and enjoy lots of great food for low prices, just like in the old days!

**DATE:** July 24th  
**TIME:** 4-8 PM  
**PLACE:** Brookside Park , 4054 Fox Run Rd., Dover, PA 17315

For more information please contact Kristal Kennedy at 717-292-3634.



## FITNESS PROGRAMS

### ZUMBA Toning

When: Wednesday's (Session 2 February 27- April 17) (Session 3 April 24- June 5)  
 Time: 7 pm- 7:45 pm  
 Where: Community Building, 3700 Davidsburg Rd  
 Cost: 1 Class a week (12 classes) 12 weeks- \$45 resident/ \$50 non-resident  
 \*\*Class is limited to 20 participants \*\*



### ZUMBA

Zumba is a great workout and is a lot of fun! Don't worry if you are a beginner, our instructor will walk you through the steps. Come out see what the ZUMBA craze is all about!!

**Evening class schedule:** Monday 5-6 pm & 6-7 pm • Wednesday 6-7 pm • Thursday 6-7 pm

**Where:** Community Building; 3700 Davidsburg Rd

**Cost - Punch cards:**  
 ~ 1 Class a week (12 classes) for 2 months- \$36 resident/ \$40 non-resident  
 ~ 2 Classes a week (16 classes) for 3 months- \$48 resident / \$52 non-resident  
 ~ 3 Classes a week (24 classes) for 3 months- \$72 resident/ \$78 non-resident



**Morning- Keep it Fit!:** This class is designed to strengthen your body and tone muscles. The class begins with no impact aerobics to strengthen your heart and warm up your body. We then conclude with muscle conditioning exercises and stretches. We use hand weights, stability balls, bands and more! There is something for everyone and you are encouraged to work at your own fitness level. Class is held at the Community Building.

**Cost - Punch cards:**  
 ~ 1 Class a week (12 classes) for 2 months- \$36 resident/ \$40 non-resident  
 ~ 2 Classes a week (16 classes) for 3 months- \$48 resident / \$52 non-resident  
 ~ 3 Classes a week (24 classes) for 3 months- \$72 resident/ \$78 non-resident

**Classes:** Monday & Wednesday 9:45 a.m. – 11:00 a.m. and Friday- 10:00 a.m. to 11:15 a.m.



### YOGA

Tuesday & Thursday

Gentle YOGA: 5:30 p.m. to 6:30 p.m.

Intermediate YOGA: 6:45 p.m. to 7:45 p.m.

Class held at the Dover Township Building.

~ 1 Class a week (12 classes) 2 months-\$45 resident/\$50 non-resident  
 ~ 2 Classes a week (16 classes) 3 months-\$60 resident/\$65 non-resident  
 ~ 3 Classes a week (24 classes) 3 months- \$90 resident/\$95 non-resident

### Saturday Morning YOGA

Saturday Mornings

8:30 to 9:30 AM

At the Dover Township Building  
 2480 W. Canal Road

1 Class a week (12 classes) 2 months  
 \$45 resident/ \$50 non-resident

You can register for any program right at the class with the instructor. The first class is free to try, after that please register with the instructor. Any questions about any programs can be directed to Kristal Kennedy at 292-3634 or visit the Dover Township website for more information: [www.dovertownship.org](http://www.dovertownship.org)

## DOVER TOWNSHIP BUS TRIPS FOR 2013



### Ocean City MD- SunFest

September 21, 2013

\$35 resident

\$45 Non-resident

6 am departure

6 pm Return

### New York City

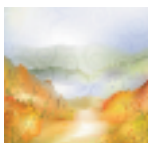
June 15, 2013:

\$40 resident • \$50 non-resident

December 7, 2013:

\$40 resident • \$50 non-resident

6 am departure- 6 pm Return



### NEW Autumn Timber Festival Shawnee Mountain Ski Resort

October 12, 2013

\$40 Resident • \$50 Non-resident

\*\*Price includes ticket to festival\*\*

8 am departure- 6 pm Return

### Overnight Trip!! Chicago, Illinois

June 23- 29, 2013 (7 days, 6 nights)

\$579 per person/double occupancy

Depart @ 8 am June 23.

Contact Tim Smith (East York Recreation)

717-246-8155



Please call Kristal for more information at 292-3634. You need to fill out a registration form and bring payment to Dover Township Building to be registered for the bus trips. If there is a large group, please turn in all paperwork and payments at one time. There is a two week cancelation period prior to the trip. No refunds will be given after that two week period leading up to the departure date unless trip is canceled by Township.

# 2012 ANNUAL DRINKING WATER QUALITY REPORT

PWS ID#: 7670073 SYSTEM NAME: Dover Township

Este informe contiene información importante acerca de su agua potable. Haga que alguien lo traduzca para usted, ó hable con alguien que lo entienda. (This report contains important information about your drinking water. Have someone translate it for you, or speak with someone who understands it.)

**WATER SYSTEM INFORMATION:** This report shows our water quality and what it means. If you have any questions about this report or concerning your water utility, please contact Chuck Farley at 717-292-3634. We want you to be informed about your water supply. If you want to learn more, please attend any of our regularly scheduled Board of Supervisors meetings. They are normally scheduled the 2nd and 4th Monday of the month, unless the date happens to be a holiday. Call the Township Office (717-292-3634) to confirm the Board of Supervisors meeting dates.



**SOURCE(S) OF WATER:** Our water sources are 10 wells located inside the physical boundaries of Dover Township. The water from our wells is disinfected as the only form of treatment. However, later this year (2013) we plan to bring Well No. 10 back online with a permitted Nitrate Removal system. We also purchase fully treated and disinfected water from the York Water Company.

A *Source Water Protection Plan (SWP Plan)* was completed in 2010 by SSM Group, Inc. The Plan was paid for by the PA Department of Environmental Protection (Pa. DEP). The SWP Plan found that our source(s) are potentially susceptible to RCRA facilities, golf courses, transportations corridors, commercial property, gas stations, underground fuel tanks, quarries, farming and manure application practices, and natural gas pipe lines. However due to water quality monitoring and the regulation of land use activities within our well head protection areas, the risk of contamination is low.

Our SWP Plan is available for public review at the Dover Township Municipal Building, 2480 West Canal Road, Dover, PA 17315. Call Chuck Farley, PWD at 717-292-3634 if you wish to schedule a review of the SWP Plan.

Some people may be more vulnerable to contaminants in drinking water than the general population. Immuno-compromised persons such as persons with cancer undergoing chemotherapy, persons who have undergone organ transplants, people with HIV/AIDS or other immune system disorders, some elderly, and infants can be particularly at risk from infections. These people should seek advice about drinking water from their health care providers. EPA/CDC guidelines on appropriate means to lessen the risk of infection by *Cryptosporidium* and other microbial contaminants are available from the Safe Drinking Water Hotline (800-426-4791).

**MONITORING YOUR WATER:** We routinely monitor for contaminants in your drinking water according to federal and state laws. The following tables show the results of our monitoring for the period of January 1 to December 31, 2012. The State allows us to monitor for some contaminants less than once per year because the concentrations of these contaminants do not change frequently. Some of our data is from prior years in accordance with the Safe Drinking Water Act. The date has been noted on the sampling results table.

## DEFINITIONS:

**Action Level (AL)** - The concentration of a contaminant which, if exceeded, triggers treatment or other requirements which a water system must follow.

**Maximum Contaminant Level (MCL)** - The highest level of a contaminant that is allowed in drinking water. MCLs are set as close to the MCLGs as feasible using the best available treatment technology.

**Maximum Contaminant Level Goal (MCLG)** - The level of a contaminant in drinking water below which there is no known or expected risk to health. MCLGs allow for a margin of safety.

**Maximum Residual Disinfectant Level (MRDL)** - The highest level of a disinfectant allowed in drinking water. There is convincing evidence that addition of a disinfectant is necessary for control of microbial contaminants.

**Maximum Residual Disinfectant Level Goal (MRDLG)** - The level of a drinking water disinfectant below which there is no known or expected risk to health. MRDLGs do not reflect the benefits of the use of disinfectants to control microbial contaminants.

**Minimum Residual Disinfectant Level (MinRDL)** - The minimum level of residual disinfectant required at the entry point to the distribution system.

**Treatment Technique (TT)** - A required process intended to reduce the level of a contaminant in drinking water.

pCi/L = picocuries per liter (a measure of radioactivity)

ppb = parts per billion, or micrograms per liter (µg/L)

ppm = parts per million, or milligrams per liter (mg/L)

## DETECTED SAMPLE RESULTS

### CHEMICAL CONTAMINANTS:

Contaminant	MCL in CCR Units	MCLG	Level Detected	Range of Detections	Units	Sample Date	Violation Y/N	Sources of Contamination
Nitrate	10	10	3.57	1.81-3.57	ppm	2012	N	Runoff from fertilizer, leaching from septic tanks, sewage, erosion of natural deposits
Halo-acetic acids	60	n/a	22	0-22	ppb	2012	N	By-product of drinking water treatment
Total Trihalomethanes	80	n/a	41.2	0.6-41.2	ppb	2012	N	By-product of drinking water treatment
Trichloroethylene	5	0	1.1	1.1	ppb	3-13-2012	N	Discharge from metal degreasing sites and other factories
Gross Alpha	15	0	3.26	3.26	pCi/L	3-1-2012	N	erosion of natural deposits
Combined Uranium	30	0	4.47	4.47	ppb	3-1-2012	N	erosion of natural deposits
Combined Radium	5	0	2.29	1.24-2.29	pCi/L	3-11-2008	N	erosion of natural deposits
Distribution disinfectant residual	4	4	0.72	0.53-0.72	ppm	2012	N	Water additive used to control microbes.

continued on page 13

## 2012 ANNUAL DRINKING WATER QUALITY REPORT (continued from page 12)

### ENTRY POINT DISINFECTANT RESIDUAL:

Contaminant	Minimum Disinfectant Residual	Lowest Level Detected	Range of Detections	Units	Sample Date	Violation Y/N	Sources of Contamination
Chlorine Residual-EP 101	0.40	0.41	0.41-0.85	ppm	2012	N	Water additive used to control microbes.
Chlorine Residual-EP 102	0.5	0.2	0.2-0.91	ppm	2012	N	Water additive used to control microbes.
Chlorine Residual-EP 103	0.6	0.36	0.36-1	ppm	2012	N	Water additive used to control microbes.
Chlorine Residual-EP 104	0.6	0.01	0.01-0.91	ppm	2012	N	Water additive used to control microbes.
Chlorine Residual-EP 105	0.6	0.01	0.01-0.91	ppm	2012	N	Water additive used to control microbes.
Chlorine Residual-EP 108	0.4	0	0-0.95	ppm	2012	N	Water additive used to control microbes.
Chlorine Residual-EP 109	0.5	0.40	0.4-0.95	ppm	2012	N	Water additive used to control microbes.

### LEAD AND COPPER:

Contamination	Action Level (AL)	MCLG	90th Percentile Value	Units	# of Site Above AL of Total Sites	Violation Y/N	Sources of Contamination
LEAD-2010	15	0	5	PPB	0	N	CORROSION OF HOUSEHOLD PLUMBING.
COPPER-2010	1.3	1.3	0.19	PPM	2	N	CORROSION OF HOUSEHOLD PLUMBING.

### MICROBIAL:

Contaminants	MCL	MCLG	Highest # or % of Positive Samples	Violation Y/N	Sources of Contamination
Total Coliform Bacteria	For systems that collect <40 samples/month: More than 1 positive monthly sample For systems that collect ≥ 40 samples/month: 5% of monthly samples are positive	0	1 sample in June, 2012	N	Naturally present in the environment
Fecal Coliform Bacteria or E. coli	0	0	0	N	Human and animal fecal waste.

### RAW SOURCE WATER MICROBIAL:

Contaminants	MCLG	Total # of Positive Samples	Dates	Violation Y/N	Sources of Contamination
E. coli	0	0		N	Human and animal fecal waste.

#### Violations

- We failed to monitor for and/or report to the state in a timely manner the nitrate and nitrite results for EP 106 (Well7) for the month of October, 2012. Samples were taken on time but results were reported late.
- We also failed to monitor for and/or report to the state in a timely manner the entry point disinfectant residual for EP 101 (Well 2) for the month of August, 2012. The chlorine levels were monitored and were well within DEP regulations. We just failed to report them within the allotted timeframe.
- We also failed to monitor for and/or report to the state in a timely manner the entry point disinfectant residual for EP 103 (Well 4) for the month of September, 2012. The chlorine levels were monitored and were well within DEP regulations. We just failed to report them within the allotted timeframe.

### EDUCATIONAL INFORMATION:

The sources of drinking water (both tap water and bottled water) include rivers, lakes, streams, ponds, reservoirs, springs and wells. As water travels over the surface of the land or through the ground, it dissolves naturally-occurring minerals and, in some cases, radioactive material, and can pick up substances resulting from the presence of animals or from human activity. Contaminants that may be present in source water include:

- Microbial contaminants, such as viruses and bacteria, which may come from sewage treatment plants, septic systems, agricultural livestock operations, and wildlife.
- Inorganic contaminants, such as salts and metals, which can be naturally-occurring or result from urban stormwater run-off, industrial or domestic wastewater discharges, oil and gas production, mining, or farming.
- Pesticides and herbicides, which may come from a variety of sources such as agriculture, urban stormwater runoff, and residential uses.
- Organic chemical contaminants, including synthetic and volatile organic chemicals, which are by-products of industrial processes and petroleum production, and can also come from gas stations, urban stormwater runoff, and septic systems.
- Radioactive contaminants, which can be naturally-occurring or be the result of oil and gas production and mining activities.

In order to ensure that tap water is safe to drink, EPA and DEP prescribes regulations which limit the amount of certain contaminants in water provided by public water systems. FDA and DEP regulations establish limits for contaminants in bottled water which must provide the same protection for public health. Drinking water, including bottled water, may reasonably be expected to contain at least small amounts of some contaminants. The presence of contaminants does not necessarily indicate that water poses a health risk. More information about contaminants and potential health effects can be obtained by calling the Environmental Protection Agency's Safe Drinking Water Hotline (800-426-4791).

Drinking water, including bottled water, may reasonably be expected to contain at least small amounts of some contaminants. The presence of contaminants does not necessarily indicate that water poses a health risk. More information about contaminants and potential health effects can be obtained by calling the Environmental Protection Agency's Safe Drinking Water Hotline (800-426-4791).

Information about Lead: If present, elevated levels of lead can cause serious health problems, especially for pregnant women and young children. Lead in drinking water is primarily from materials and components associated with service lines and home plumbing. Dover Township is responsible for providing high quality drinking water, but cannot control the variety of materials used in plumbing components. When your water has been sitting for several hours, you can minimize the potential for lead exposure by flushing your tap for 30 seconds to 2 minutes before using water for drinking or cooking. If you are concerned about lead in your water, you may wish to have your water tested. Information on lead in drinking water, testing methods, and steps you can take to minimize exposure is available from the Safe Drinking Water Hotline or at <http://www.epa.gov/safewater/lead>.



# DOVER TOWNSHIP

*York County, Pennsylvania*

**Address:**

2480 West Canal Road • Dover, PA 17315

**Phone:** (717) 292-3634 • **Fax:** (717) 292-1136

**E-mail:** dovertwp@dovertownship.org

**Municipal Office Hours:** 8:00am to 4:30pm except Holidays

Laurel Oswalt - Township Manager

## DOVER TOWNSHIP BOARD OF SUPERVISORS

Madelyn Shermeyer-Chairperson-Administration, Fire, ICDC

Monica J. Love-Vice Chairperson-Water, MS4 stormwater

Michael G. Husson- Asst Secretary-Sewer & Wastewater, Ambulance Club

Matthew D. Menges-Supervisor- Police

Charles S. Richards- Supervisor-Highways, Recreation & Parks

*York County, Pennsylvania*



**Brian Prosser**

90 Old York Road  
Rossville, PA 17358  
(717) 432-8352  
prossersautobody.com  
pabshop@ptd.net

**When It's More Than Just Transportation**



HIC# 8791

York, PA

Roofing Siding Spouting Windows

**SHILOH ROOFING**

*Since 1957*

717-764-1269

www.shilohroofing.com

## Sam's Painting & Drywall, LLC

PA019981



Commercial & Residential  
Interior & Exterior  
Painting • Light Carpentry  
Staining • Power Washing  
Snow Removal/Junk Removal

**Call Sam . . . He's the handy man!**

**Office** 717-308-0373

**Cell** 717-577-6572

**email** samuelkearse@yahoo.com

*Dover Antique Mall Etc.*  
*"Not Just Antiques"*

Tuesday-Friday 10am-5pm

Saturday 10am-7pm • Sunday 10am-5pm

5010 Carlisle Road  
Dover, Pennsylvania 17315

(717) 292-2629

Doverantiquemall@gmail.com

## DOVER TOWNSHIP

2480 West Canal Road  
Dover, PA 17315

PRSRT STD  
ECRWSS  
U.S. POSTAGE  
**PAID**  
PERMIT NO. 609



This Community Newsletter is produced for the  
Dover Township by **Hometown Press • 215.257.1500 • All rights reserved®**  
*To Place An Ad Call Sara Pifer at Hometown Press • 717-395-1634*

### ALS Holdings LLC

Benchmark Properties & Helping Hands



#### Mr. & Mrs. Buy Houses

3700 Carlisle Rd. Bldg B, Pa. 17315  
Call Ed: 443-676-2699

Amanda Shoffner: 443-929-2737  
Alsholdingsllc@gmail.com  
Check us out at: Alsholdingsllc.com



*Minnich's*  
LAWN & LANDSCAPE, LLC

**717-792-0536**  
[www.minnichslawn.com](http://www.minnichslawn.com)

### RESIDENTIAL & COMMERCIAL MOWING

- Aeration
- Slit Seeding
- Dethatching
- Top Dressing
- Mulching/Edging/Weeding
- Stump Grinding
- Shrub & Hedge Trimming
- Spring & Fall Cleanup

1700 Baker Road • York, PA 17408  
PA 047052

**You would cry too**  
*If you knew what you could have saved.*

Rob Stone, President  
**855-292-2028**  
Give us a call today.  
We'll put a smile back on your face.

#### Commercial & Personal Insurance

- Liability
- Property
- Workers Compensation
- Auto & Home
- Life
- Motorsports



[www.covenantcares.com](http://www.covenantcares.com)