

DOVER TOWNSHIP

York County, Pennsylvania

FALL 2012



ATTENTION DOVER TOWNSHIP COMMUNITY GROUPS

Dover Township Adopt-A-Road Program



Did you know that Dover Township has an Adopt-A-Road Program? Did you also know that under our Department of Environmental Protection issued MS4 Permit for storm water we are required to work with community groups to protect the water quality of our watershed? In an effort to meet those obligations we are expanding our program to include Township Right-of-Ways.

Under the program, volunteer groups would be agreeing to "adopt" a road or right-of-way within the Township to keep clear of trash and debris. A report back to the Township at the end of the clean-up is required in order for the Township to keep track of the amount of materials removed. We are currently looking for your input on the program before we finalize all the requirements. If you are interested in helping us shape this program, please go to our website at www.dovertownship.org and look for the link titled Adopt-A-Road Survey located in the new information box on the main page. We appreciate your input and look forward to partnering with your organization to protect our watershed. Thank you!

The **Dover Band Family** wants to thank the community for once again making us one of the top 100 schools for music. Without your support, the students would not be able to accomplish so many great things!

DATES TO REMEMBER:

Saturday, October 29, 2012 is the **Dover Band Show**

Saturday, November 10, 2012 is the **Dover Band Boosters' Craft Show**

We hope to see you at the high school for both events!



IN THIS ISSUE

Dover Area Food Bank	2	Christmas Magic Festival of Lights.....	10
Brush Facility Hours of Operation Changing	2	I Discovered Stormwater Management	
Dover Township Volunteer Fire Department.....	3	Can Be Beautiful	10
Volunteer Fire Department Auxilliary	4	Escape Planning	11
The Shiloh Garden Club	4	Conewago Garden Club	12
Union Fire and Hose Co. #1	5	Warning! Sump Pumps Connected to the	
Heritage Senior Center	5	Sanitary Sewer Cause Big Problems	12
Upcoming Events With Dover Township Recreation	6	Recycling Information	13
Fitness Programs.....	7	Contact Information	13
Dover Area Community Library	8		

2480 West Canal Road • Dover, Pennsylvania 17315

www.dovertownship.org



4555 Paradise Rd. | Office 717-292-5696
Dover, PA 17315 | Fax 717-292-5807
www.hivelylandscapes.com



MADISON VALLEY MANOR

DANA SNYDER
Community Director

2900 Honey Run Drive
York, PA 17408

(717) 792.0711 desk
(717) 792.1560 fax
dsnyder@maglp.com



*Award winning community
with pool, playground and
on-site management.*

ARCHITECTURE | ENVIRONMENTAL | TRANSPORTATION



The Russell E. Horn Building
445 West Philadelphia Street | York, PA 17401-3383
T: (717) 852-1400 | F: (717) 852-1401 | www.bh-ba.com



- HOME
- AUTO
- FARM
- BUSINESS

Insurance

GET YOUR QUOTE!

CALL - 717-632-7270 TEXT - 717-451-3849
ONLINE - www.BarrickAssociates.Com



C & L FAMILY TOWING

6581 Harmony Grove Road, Dover, PA 17315
Phone: 717-502-6009 · 717-308-7245 / Fax: 717-308-7241
www.clfamilytowing.com
clfamilytowing@yahoo.com
Pricing available online or by phone

Family Owned & Operated - Open 24 hours a day, 7 days a week

Lockouts - Jump Starts - Fuel Delivery - Motorcycle Tows - Light, Medium, Heavy Towing - Car Removal - Winch Outs

Visa & Mastercard accepted with 3% service fee

CASH SPECIAL

Light Duty Tows

\$50 hookup

First 5 miles free &
\$4.00 for each
additional mile

NOW RENTING



Offering One, Two and Three Bedroom Units

721 South Mountain Road

Dillsburg, PA 17019

Phone (717) 432-4700

TTY 1-877-489-2478

Income Restrictions Apply

NO APPLICATION FEE

Proudly Managed By:

FAIRVILLE MANAGEMENT COMPANY, LLC

Offering Equal Opportunity in Housing and Employment

Ask About Our "Move-in Special"



- New Construction
- Energy Efficient
- Fully Equipped Kitchen
- Wall to Wall Carpeting
- Private Entrances
- On Site Management
- Community Center
- Laundry Facility on Site
- 24 Hour Maintenance
- Playground
- Fully Accessible Units
- Beautiful Rural Setting

RENTAL RATES

1 bedroom \$496.00

2 bedroom \$634.00

3 bedroom \$754.00

Income Restrictions apply
Ask about our lower priced
Disability Units



www.fairvillemanagement.com

DOVER AREA FOOD BANK

Many thanks to the community for your generous support of the Dover Area Food Bank in the past year. With your help, we have been able to help over 160 families each month with groceries. The regular contributions from the churches, farmers and gardeners, plus the donations from the Postal Food Drive in May and National Night Out in August were a great help. We are looking forward to your support of the Boy Scout Food Drive in November.

Again this year we will be handing out Christmas Baskets with a value of approximately \$60.00. Anyone wishing to sponsor a basket may make checks payable to 'Dover Area Food Bank', and mail to Dover Area Food Bank, 1832 Industrial Ct., Dover PA 17315. Any amount donated is greatly appreciated.

Non Perishable Donations may be delivered to the Food Bank on Monday, Tuesday, and Thursday between 9:00 A.M. - 11:30 A.M. For more information, please contact us at 717-292-9876.

Thanking you in advance for helping us to provide food to families in need. *BLESSINGS to you and yours as we enter this Holiday Season.*

Dorothy Weiland, *President* - Dover Area Food Bank Board



Brush Facility Hours of Operation Changing *Effective August 2012*

Due to recent illegal dumping of non-brush items at our Brush Collection Facility, Dover Township has had to limit the hours of operation of the facility. Beginning in August 2012, Dover Township's Brush Drop Off Facility will no longer be open to the public every Saturday from 7:00 AM to 4:00 PM. The Facility will only be open on the 2nd and 4th Saturdays each month from 7:00 AM to 4:00 PM. This cost saving measure is being taken in order to keep the Township within budget for 2012 as well as to ensure that Township personnel are present to inspect loads being dropped at the facility. We apologize for any inconvenience this may cause. Please be sure to report any illegal dumping that you see at this facility to the Township Office at 292-3634. Illegal items include: grass clippings, roots, root balls or any debris that is not yard waste (brush) or wood. Continued illegal dumping may result in the closing of this facility. Thank you.



**TIMBERVIEW VETERINARY
HOSPITAL**

**106 WEST CABIN HOLLOW ROAD
DILLSBURG, PA 17019**

717-432-2513

www.timberviewvet.com



Pick-Your-Own
Pumpkins
Gourds
Sunflowers



BAREFOOT FARM
6621 Bluebird Lane • Dover
717-292-1390



PICKING HOURS:
Mon, Tues, Thurs & Fri:
10am-dusk
Sat: 9am-5pm

Hand-dipped
Ice Cream &
Sandwiches

Cider & Dumplings

Scheduled Hay Rides
Mon & Fri 6pm
Sat & Columbus Day 11am-3pm

Free Straw Fort

Kids Corn Box

Great Photo Spots!



*Have fun without the freight.
To God be the glory!*



Hello All,

Just checking in and wanted to give you an update on your local fire department.

Dover Township Fire Department responded to 715 calls for help in 2011 with a 100% response rate. This is a huge accomplishment for an all VOLUNTEER fire department. In October 2011 we put in service a 2011 Pierce Arrow XT heavy rescue. What is this and how does it serve you? Basically it is a huge toolbox on wheels. The primary use for the rescue is vehicle accidents and special rescues. The rescue features a new 4 tool Amkus Ultimate System. This system eliminates the need for having to pull out heavy portable hydraulic pumps with short hoses to operate our life saving vehicle extrication tools. The rescue also carries equipment to help us on structure fires as a support piece, providing extra lighting, fans, and tarps etc. The best feature of the new rescue is that it was primarily bought with YOUR generous donations, and we thank you. We encourage you to stop by the firehouse at 3700-1 Davidsburg Rd and check it out sometime!



PeterBuilt Box Truck



F-550 and Enclosed Trailer

located right here in Dover Township! This adds numerous resources to our cache of special rescue equipment we already operate.

Please look us up on Facebook
www.facebook.com/Dover.Township.Fire.Department or www.dtvfd9.com
 for more updates. This is the exciting news from the fall of 2011 check back in the next issue for the spring of 2012 updates!

Stone, Duncan & Linsench, PC

Attorneys & Counselors

Nearly All Areas of Law:

Business • Real Estate • Military • Intellectual Property
 Family • Criminal • Bankruptcy • Federal & State Litigation
 Probate & Estate Planning • Motorcycle Accident •
 Nursing Home Malpractice • Immigration • Personal Injury
 Municipal & Zoning • Gas & Oil Law • HOA Law



The Key to Great Legal Services

STONEDUNCAN.COM
717-432-2089



The Dover Township Fire Department has **BINGO every Friday night** at 3700 Davidsburg Rd. Door opens at 5 pm and games start at 6:45 pm.

VOLUNTEER FIRE DEPARTMENT AUXILIARY

Dover Township Volunteer Fire Department's Auxiliary meets the last Wednesday of every month at 7:00 p.m. at the fire department on Davidsburg Road. Our next event for the public will be **Breakfast With Santa on Saturday, November 17 from 8 a.m. to 11 a.m.** A **Chinese Auction** will be held along with local vendor stands. Please call 308-9927 for further information. A **dance will be held on Saturday, March 9, 2013** featuring the band "Love Haters". Please call 292-5633 for tickets that will be available in January.



LEAF COLLECTION

FALL LEAF COLLECTION:

Begins November 12th to December 20th

The Shiloh Garden Club

The Shiloh Garden club has awarded a \$500.00 scholarship to Julia Zielinski. She is the daughter of Mr. and Mrs. John Zielinski.

Julia graduated first out of 253 students from Northeastern Senior High School. She has participated in many school activities as well as non school activities and has proved numerous years of community service. Julia has been accepted to Franklin And Marshall College class of 2016. She will be majoring in Environmental Studies and Energy Conservation Sustainability.

Our schedule:

On October 25, 2012 : "Delicious designs"-a group project designing arrangements out of fruit and vegetables.

On November 15, 2012: We have the greens workshop at Dover Fish and Game with a soup and bake sale by our members.

On December 13, 2012 : This is our annual Christmas party luncheon to be held this year at The Holiday Inn on Loucks Road .

We welcome anyone to visit or join our club. Meetings are held at 10:45 the 4th Thursday of the month at Community Center on Davidsburg Road.



www.AppleAutomotive.com

UNION FIRE AND HOSE CO. #1

30 East Canal St
Dover Pa. 17315
Phone # (717) 292-1493
Fax# (717) 292 3521



Check out our new web site www.unionfireandhose.com

EVENTS:

Bingo: Every Monday night starting @ 6:45pm.

Public Suppers: we will have one on Oct 27th 3:30pm until

Lottery Drawing: Based on the evening daily number. Interested in tickets, please contact Andrew Kroft @ 873-2416

Thanks for all your support during our carnival



Join Heritage Members and Friends for a Trip to Savannah, Jekyll Island and Beaufort, SC.

7 Days, 6 Nights - April 21-27, 2013
\$525 per person (double occupancy)
\$75 due w/reservation – Final payment due 2/13/13.

We will begin taking reservations on Thursday, November 1, 2012.

Call 292-7471 to request a detailed itinerary.

Check out what's happening at Heritage Senior Center for Dover Community residents age 60 and over. Stop in Mon-Fri, 8am-3pm and get acquainted!

We offer a hot lunch at Noon each day. Activities include cards, Wii games, Bingo, Exercise Classes, Bible Study, Knitting Group, Book Discussion Group, Day/Overnight Trips, Computer Lab, Crafts, German Class, Health/Nutrition Education and lots of fun and socialization.

Volunteer for Our Meals-on-Wheels Program that distributes meals to homebound seniors Mon-Wed-Fri. **Call Marci at 292-7471 for details** – you can drive as little or as often as your schedule permits.

HERITAGE SENIOR CENTER

3700 Davidsburg Rd., Dover, PA 17315
Ph: 717/292-7471 www.heritagesrcenter.org



Outreach Projects:

- Month of October – non-perishable food collection for Dover Food Pantry.
- Month of November – Hat & Mitten Tree for New Hope Ministries.
- On-going – join our knitters/crocheters in creating chemo hats, lap robes and shawls for American Cancer Society-York Unit. We also knit and sell cotton dish cloths (\$2.75 ea. or 2/\$5). All proceeds are donated to American Cancer Society. We are currently accepting donations of 4-ply cotton yarn (Sugar n' Cream).



Pressley Ridge
Serving Children and Families Since 1832

IS SEEKING TREATMENT

CRR/TREATMENT PARENTS

717.845.6624 ext 21602
abyers@pressleyridge.org

WHY BE A FOSTER PARENT:

- The number of children in our own communities who need foster families is growing.
- You can help by becoming a Pressley Ridge Professional Foster Parent.
- Receive free training, respite support and 24/7 on-call services.
- Earn a tax-free stipend while helping a youth in need.

BASIC REQUIREMENTS:

- At least 23 years old
- Pass PA clearances background check
- Have room in your Heart and Home
- A commitment to provide a safe and secure home environment to a youth with troubling behaviors.

A child in need of a home may be waiting for you.

Call us today!

UPCOMING EVENTS WITH DOVER TOWNSHIP RECREATION

Trunk or Treat in the Park: October 26th, 2012 from 6 p.m.-8 p.m. in Brookside Park

Looking for something different to do for Halloween this year? Ghost and Goblins are taking over Brookside Park! Come and enjoy the Halloween festivities. There will be scary storytelling, Trunk or Treating, Haunted Hay Ride and a Spooky Game House! Concessions will be available. Please bring a donation of non-perishable food for the Dover Food Bank! One item equals a FREE hot dog or drink. PARENTS: To sign up for the Trunk or Treat event please contact the Weiglestown Elementary PTO Coordinator- Lori Mabeus at 717-747-3606 (Limited to a total of 50 cars).



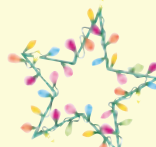
Christmas in the Park: December 1st, 2012 from 5 p.m.-8 p.m. in Brookside Park

Do your kids just love seeing Santa at Christmas time but hate waiting in lines at the Mall? Come to Christmas in the Park for a free picture with Santa and a craft project will be provided while you wait. Steve Courtney will be performing. Be sure to bring a camera to take the picture. Santa will be at Brookside Park December 1st from 6 pm – 8 pm. Concessions will be available. Please bring a donation of non-perishable food for the Dover Food Bank! One item equals a FREE hot dog or drink. *Volunteers needed to help decorate the park in the morning. Please contact Kristal 292-3634 for more information!*

York County Department of Parks & Recreation Proudly Presents . . .

CHRISTMAS MAGIC A FESTIVAL OF LIGHTS

At Rocky Ridge County Park
November 23rd through December 31st
Closed December 24 and 25



Hours:

Mon. – Fri., 6:00 – 9:00 p.m.
Sat. & Sun, 5:00 – 9:00 p.m.

*500,000 lights
trains and Holiday displays
entertainment and food*



Admission Rates

Adults - \$8.00
Children (4-12) - \$6.00
Under 4 Free
Seniors (over 59) - \$7.00
Adult Group (11+) - \$7.00
Children Group (11+) - \$5.00

*For more information and trail updates, call (717) 840-7440
Visit our website at www.yorkcountyparks.org*



Dover Township Weeks
at the 29th edition of
**CHRISTMAS MAGIC –
A FESTIVAL OF LIGHTS**
November 23–December 14 &
December 26-31

Rocky Ridge County Park
Coupon is redeemable for
**BUY ONE, GET ONE FREE
ADMISSION**

Maximum is 2 free regular admissions
This coupon is valid only for 2012 program
Coupon is good for a one-time use.



facebook

*Do you ever wonder
what new events or
programs are happening
in Dover Township?*

“Like” Dover Township Recreation on Facebook and you could become our Fan of the Week! We post about our coming events, program updates, post healthy recipes, workout tips and promote local events and businesses! Become a Fan today!



3700 Carlisle Road, Bldg. B
Dover, PA 17315
Tel. 717-292-7357
Jean B. Abreght, President

Copies • Faxes • Notary Public
Resumes • Typing • idigital/24 hr Dictation Service

www.thedocumenthouse.biz • transcript@dochouse.biz

SPANGLER'S HOME CENTER



**Mums
Corn Shocks
Trees & Shrubs
Soil • Mulch
Stone • Pavers**

**SEEDERS • AERATORS • HAND POWER TOOLS
TILLERS • AUGERS • CHAIN SAWS
WOOD CHIPPERS • STUMP GRINDER
DETHATCHER • LOG SPLITTERS**

SPANGLER'S HOME CENTER & RENTAL

4072 Carlisle Road • Dover, PA 17315-3508
292-6055 voice / 292-7476 fax
Spanglershomecenter@hotmail.com

**STORE HOURS: Monday thru Friday 7:30 a.m. to 8:30 p.m.
Saturdays 7:30 a.m. to 7:00 p.m. • Sunday 9:00 a.m. to 5:00 p.m.
RENTAL STORE HOURS: Monday thru Friday 7:00 a.m. to 6:00 p.m.
Saturday 7:00 a.m. to 3:00 p.m. • Closed Sunday**

FITNESS PROGRAMS

Are you looking to get back in shape or just looking to add something new to your workout? Dover Township Recreation has several fitness programs for you to try! All fitness programs run all year long. You can sign up at any time with the instructor right at the class. Your first class is free to try!! Zumba and Keep it Fit share a punch card so you can go to either class. The Yoga punch card is only good for Yoga classes. Any questions please call Kristal at 292-3634 or visit our website at www.dovertownship.org

ZUMBA Toning

When: Wednesday's (Session 5 October 10 through December 26, 2012)
Time: 7:00 p.m. - 7:45 p.m.
Where: Community Building; 3700 Davidsburg Rd
Cost: Class a week (12 classes) 12 weeks- \$45 resident/ \$50 non-resident
***Class is limited to 20 participants ***



ZUMBA

Zumba is a great workout and is a lot of fun! Don't worry if you are a beginner, our instructor will walk you through the steps. Come out see what the ZUMBA craze is all about!!

Evening class schedule:

Monday 5:00-6:00 p.m. & 6:00-7:00 p.m. • Wednesday 6:00-7:00 p.m. • Thursday 6:00-7:00 p.m.

Where: Community Building; 3700 Davidsburg Rd

Cost - Punch cards:

- ~ 1 Class a week (12 classes) for 2 months- \$36 resident/ \$40 non-resident
- ~ 2 Classes a week (16 classes) for 2 months- \$48 resident / \$52 non-resident
- ~ 3 Classes a week (24 classes) for 2 months- \$72 resident/ \$78 non-resident



Cost - Punch cards:

- ~ 1 Class a week (12 classes) for 2 months- \$36 resident/ \$40 non-resident
- ~ 2 Classes a week (16 classes) for 2 months- \$48 resident / \$52 non-resident
- ~ 3 Classes a week (24 classes) for 2 months- \$72 resident/ \$78 non-resident

Classes:

Monday & Wednesday 9:45 a.m. – 11:00 a.m. and Friday- 10:00 a.m. to 11:15 a.m.

Morning- Keep it Fit!: This class is designed to strengthen your body and tone muscles. The class begins with no impact aerobics to strengthen your heart and warm up your body. We then conclude with muscle conditioning exercises and stretches. We use hand weights, stability balls, bands and more! There is something for everyone and you are encouraged to work at your own fitness level. Class is held at the Community Building.

YOGA

Tuesday & Thursday

Gentle YOGA
5:30 p.m. to 6:30 p.m.

Intermediate YOGA:
6:45 p.m. to 7:45 p.m.

Class held at the Dover Township Building.

- ~ 1 Class a week (12 classes) 2 months- \$45 resident/ \$50 non-resident
- ~ 2 Classes a week (16 classes) 2 months- \$60 resident / \$65 non-resident
- ~ 3 Classes a week (24 classes) 2 months- \$90 resident/ \$95 non-resident

Saturday Morning YOGA

Saturday Mornings – 8:30 to 9:30 AM
 At the Dover Township Building
 2480 W. Canal Road

- ~ 1 Class a week (12 classes) 2 months- \$45 resident/ \$50 non-resident



To register for any aerobic programs, you can sign up right at the class with the instructor. The first class is FREE! After that you must sign up for a punch card. Classes are ongoing all year long and you can sign up at any time. For more information please call Kristal Kennedy at 717-292-3634.

OCTOBER - DECEMBER 2012 EVENTS

CHILDREN PROGRAMS

Monday Evening Story Time *Mondays 7:00 p.m.*

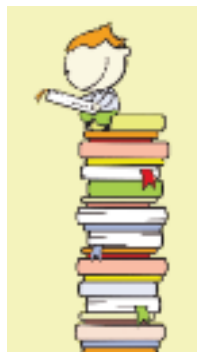
This evening session is geared for families with children of all ages. Join the fun as one of our volunteer shares her love for books! Gather the gang and discover books sure to become favorites! No registration needed, simply stop in!

Baby Time *Tuesdays 11:00 a.m. or Thursdays 10:00 a.m.*

These sessions are geared for parent and child from birth to 2 years of age. Introduce your baby to literature and the library as Miss Lisa share favorite books, songs, nursery rhymes and more. This is a great time for social interaction for both baby and parents. Grandparents, caregivers and siblings are welcome, too. Fall 2012 session runs from September 25 through December 14.

Toddler Time *Tuesdays 10:00 a.m. or Thursdays 11:00 a.m.*

These sessions are geared for 2 and 3 year old children and an adult. Join Miss Lisa as she shares books, rhymes, music, movement activities, finger-plays, crafts and more! Toddler Time has two different sessions – select the one that suits you the best. Fall 2012 session runs from September 25 through December 14.



Preschool Story Time

Tuesdays 1:00 p.m. or Thursdays 1:00 p.m.

These sessions are geared for children ages 4, 5 and 6. Parents may join us or browse in the library. Join Miss Karen as she shares books, music, action games, and more! Preschool Story Time has two different sessions, select one that suites you. . Fall 2012 session runs from September 25 through December 14.

Super Saturdays *will be held on October 13, November 10, and December 8. Details at the library.*

Tales for Tails *Second Saturday*

This session is geared for beginning readers, reluctant readers, readers who need some practice and readers who love dogs! Join Miss Janice and Cosworth, Miss Barb and Crissy, and Miss Rose and Mitzy to read a book or two. Cosworth, Crissy, and Mitzy are certified Therapy Dogs who love to listen to stories. Sign-up please, but drop-ins welcome if there is time. Program held 2nd Saturday.

ADULT PROGRAMS

Knitting Group *Wednesdays, 6:00 p.m.*

Knit, chat, share, learn, and get out of the house... who could ask for more? Check at the main desk to see if there is a special project this month or bring in your current project. All knitters welcome. Group meets each Wednesday of the month.

Christian Fiction Book Discussion Group *3rd Monday*

Each Month 6:30 p.m. This group meets the 3rd Monday each month and is growing but new members are still welcome. Visit the display, borrow and read the book then join in the discussion. October: *The Half-Stitch Amish Quilting Club* by Wanda Brumstetter, November: *Lost Melody* by Lori Copeland. December: *A Plain and Fancy Christmas* by Cynthia Keller. For more information or to register call the library at 292-6814.

10 Steps to Digging Out of Debt *Monday, October 15th at 6:30 p.m.* Please register so that we may adequately prepare for space.

Preparing for the Interview

Tuesday November 13, 2012 from 6:30 p.m. to 8:00 p.m.

Local author Ty Ferrell Sr. will hold a free workshop titled "Preparing for the Interview" based on his book "The Road to Controlling Your Career" a much-needed guide that will help job seekers from the initial step of deciding what position he or she would like to have, to the final step of obtaining and having a successful interview. Books are available at 30% discount. Please register so that we may adequately prepare for space.



One Book, One Community Program: Hurricane on the Bayou Movie & Discussion *Monday, October 15th at 6:30 p.m.*

Join us to view the documentary film that "carries audiences on a journey deep in the heart of Louisiana – before, during,

and after the devastation of Hurricane Katrina." Light refreshments.

Planning for Social Security, *Tuesday, October 23rd 6:30 p.m.* Please register so that we may adequately prepare for space.

One Book, One Community Program: Zeitoun Book Discussion *Monday, October 29th at 7:00 p.m.* Join us to discuss *Zeitoun* by Dave Eggers. For more information, visit the library or call 292-6814.

COMPUTER CLASSES:

Mondays and Thursdays October 22nd through November 8th from 2:00 p.m. - 4:00 p.m. \$25 per class

Monday, Oct. 22 (2pm - 4pm)Mouse Skills
Thursday, Oct. 25 (2pm - 4pm)Keyboard Skills
Monday, Oct. 29 (2pm - 4pm)Basic Computer Skills
Thursday, Nov. 1 (2pm - 4pm)Basic Internet
Monday, Nov. 5 (2pm - 4pm)Microsoft Word
Thursday, Nov. 8 (2pm - 4pm)Microsoft Excel

Students call Jeanina Sargent at (717) 586-1878 directly to register.

DOVER AMBULANCE 2012/13

Subscription Notice

Since 1958, Dover Area Ambulance Club, Inc. (DAAC) has been committed to providing the highest quality Basic Life Support Service to everyone in our area. DAAC is NOT associated with any local Fire Department and is a non-profit ambulance service. DAAC does not receive ANY local tax subsidy. We rely on donations from the Community and billing to off set the high costs of the service.

DAAC staffs two ambulance daily with paid EMT's. DAAC runs around 2100 calls a year.



SUBSCRIPTIONS COVERAGE AND BENEFITS:

Did you know that some insurance companies do not pay for ambulance service as part of their benefits. You will want to see what your coverage is.

DAAC will write off what insurance won't pick up, once co-pays/deductibles have been paid (as specified by insurances).

If you have no insurance, a subscriptions offers a discount of 15% on services.

You will receive a bill from Healthcare Management Control (HMC) in Lancaster. You can submit the bill to your insurance company or give your insurance information to HMC, so they can bill your insurance direct. Your subscription covers the portion of the bill your insurance does not pay, after the third party providers have been billed.

The subscription does not cover yearly deductibles that you are "required" to pay.

This subscription is good for three (3) 911 responses including refusal of services.

A participating subscriber shall be entitled to "emergency" ambulance service by Dover Area Ambulance club, when available, to the closed hospital emergency room in our response area, providing the hospital is not on divert and is accepting patients.

October 1, 2012 to September 30, 2013

SUBSCRIPTIONS DO NOT COVER SERVICES PROVIDED BY LOCAL ADVANCED LIFE SUPPORT UNITS (ALS).
DAAC SUBSCRIPTIONS DO NOT COVER TRANSPORTS BY ANY OTHER AMBULANCE SERVICE.
WHEEL CHAIR VAN SERVICES ARE A SEPARATE SERVICE AND NOT COVERED.

2012-2013 SUBSCRIPTION OPTIONS

Senior Names (ages 65 & over)

Individual Names (ages 18-64)

☐ \$20.00 each x _____ = \$ _____

☐ \$25.00 each x _____ = \$ _____

Children Names (ages to 17) - Children living at address ONLY

Business Name

☐ \$10.00 each x _____ = \$ _____

☐ \$65.00 each x _____ = \$ _____

DONATION \$ _____

TOTAL ENCLOSED \$ _____

Name: _____ Phone: _____

Address: _____

Send to: Dover Area Ambulance Club Inc., 40 East Canal Street, Dover, PA 17315, Phone: 717-292-9776

I DISCOVERED STORMWATER MANAGEMENT CAN BE BEAUTIFUL



When my family and I moved to Dover in April of this year, we were very happy to now have a smaller, more manageable lawn. However, that feeling was quickly “dampened” by standing water left on the patio after a soaking Spring rain that forced us to muddle through about 4”-6” of water to get into our house. It wasn’t long after that I received information from Dover Township about Stormwater Management BMPs (Best Management Practices) that gave me some hope for dry feet.

I love to landscape my home and find enjoyment in gardening after a stressful day at the office. I picked up a brochure from the Dover Township Office on “Rain Gardens” and proceeded to look on line to find more information on how this concept works. I was so excited to learn that I could solve my standing water issue, improve my landscape and do my part for the environment “all in one fell swoop”!

I took a basic design for a Rain Garden and a plant list for our area which is “Piedmont” and chose plants from the list that expressed my personality yet thrived in a lot of water. I also received some advice from a the owners of a local company “Why Not Greenhouse” asking them to recommend some “water loving plants” They introduced me to my new favorite grass “King Tut Grass” that thrives in water and adds character to any landscape project.

We customized our design and installed our Rain Garden to work with our soil type which is very heavy clay that percolates at a slower rate than a sandier, loamy soil. We also chose to use River Pebbles from SKH, rather than mulch, which look beautiful while adding function to our Rain Garden by not washing into piles. I am thankful for the information that has resulted in a nicely landscaped lawn and nixed the standing water issues at my home.

I hope that you discover, just as I did, that with a little effort; you too can practice stormwater management in your lawn on a limited budget with some advice, information and assistance from Dover Township Office and some of our wonderful local businesses.

Kimberly N.
Dover Township Resident

We would like to hear from you:

Since the adoption of the state and county mandated Stormwater Management Ordinance in 2011, I have had the opportunity to meet one on one with many of our residents to discuss stormwater issues. Among the questions I’m often asked is “Why do we need such an ordinance?”, those of you that have spent time in the outdoors around streams and creeks already know the answer to that question. Anytime streams and creeks are located within a developed area they are subject to concentrated stormwater flows from the additional impervious surface and stream bank erosion will occur. In addition, stormwater runoff contains nutrients and pollutants that degrade our streams and rivers and ultimately the Chesapeake Bay. It is important to come together as a community to protect our natural resources. Numerous communities throughout the United States are beginning to see that every little bit helps. Dover Township wants to thank Kimberly for her article and would like to hear from more of you. We will be placing Kimberly’s article and future articles from residents on our Website at http://www.dovertownship.org/New_Website/watershed.html

Chuck Farley, Public Works Director

Escape Planning

Plan Ahead! If a fire breaks out in your home, you may have only a few minutes to get out safely once the smoke alarm sounds. Everyone needs to know what to do and where to go if there is a fire.

SAFETY TIPS

- » **MAKE** a home escape plan. Draw a map of your home showing all doors and windows. Discuss the plan with everyone in your home.
- » **KNOW** at least two ways out of every room, if possible. Make sure all doors and windows leading outside open easily.
- » **HAVE** an outside meeting place (like a tree, light pole or mailbox) a safe distance from the home where everyone should meet.
- » **PRACTICE** your home fire drill at night and during the day with everyone in your home, twice a year.
- » **PRACTICE** using different ways out.
- » **TEACH** children how to escape on their own in case you can't help them.
- » **CLOSE** doors behind you as you leave.

IF THE ALARM SOUNDS...

- » If the smoke alarm sounds, **GET OUT AND STAY OUT**. Never go back inside for people or pets.
- » If you have to escape through smoke, **GET LOW AND GO** under the smoke to your way out.
- » **CALL** the fire department from outside your home.



Your Source for **SAFETY** Information www.nfpa.org/education
NFPA Public Education Division • 1 Batterymarch Park, Quincy, MA 02169

FACTS

- ! According to an NFPA survey, only **one of every three** American households have actually developed and practiced a home fire escape plan.
- ! While **71%** of Americans have an escape plan in case of a fire, only **45%** of those have practiced it.
- ! **One-third** of American households who made an estimate thought they would have at least 6 minutes before a fire in their home would become life-threatening. The time available is often less. And only **8%** said their first thought on hearing a smoke alarm would be to get out!



CONEWAGO GARDEN CLUB

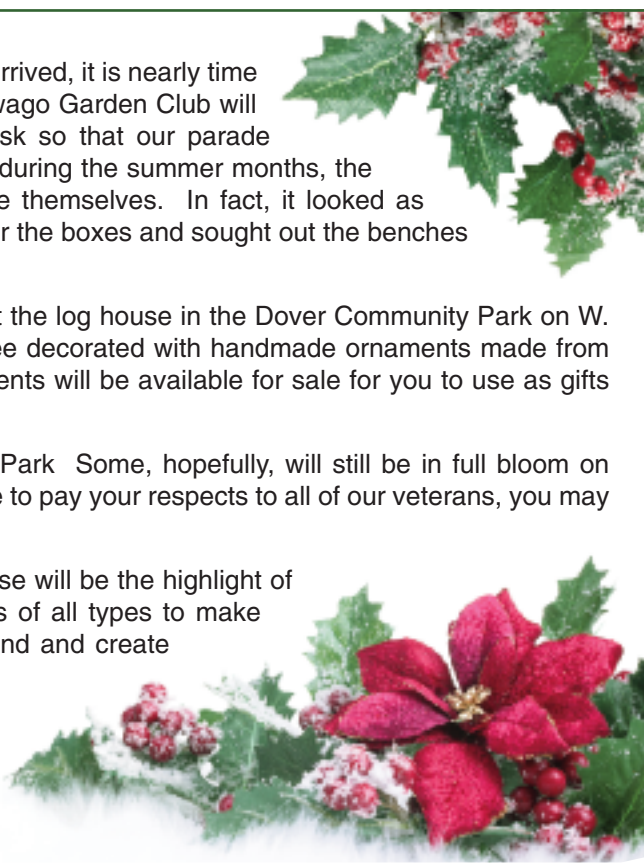
Now that summer is coming to an end and the fall months have arrived, it is nearly time to dismantle the flower beds in the Dover Square. The Conewago Garden Club will wait until after the Dover Halloween Parade to complete this task so that our parade watchers can enjoy the floral display. In spite of the severe heat during the summer months, the fountain grass, coleus, and sweet potato vines have just outdone themselves. In fact, it looked as though the vines were part of the kudzu family as they tumbled over the boxes and sought out the benches and sidewalks to expand their range.

On November 10th, the garden club is hosting an open house at the log house in the Dover Community Park on W. Canal Rd. We invite you to enjoy our old-fashioned Christmas tree decorated with handmade ornaments made from natural materials by garden club members. Many of these ornaments will be available for sale for you to use as gifts or for your own holiday decorations.

Seasonal flowers are also on display at the Dover Community Park. Some, hopefully, will still be in full bloom on Veterans Day, November 11th. When you visit the park on this date to pay your respects to all of our veterans, you may well be treated to colorful gardens as well.

The Hanging of the Greens and other decorations in the log house will be the highlight of our November 28th meeting at 10:00 a.m. We also bring greens of all types to make wreaths and centerpieces for our homes. You are invited to attend and create your own festive decoration.

The Conewago Garden Club is active and busy year round. Its members find great pleasure and satisfaction in providing the community with gardens that catch the eye and create interest in our surroundings.

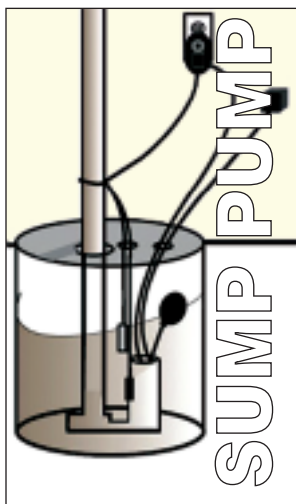


WARNING!

Sump Pumps Connected into the Sanitary Sewer Cause Big Problems!

Besides the fact that connecting sump pumps to the sanitary sewer is illegal, it causes big problems! Sump pumps are designed to pump groundwater and rainwater. Sanitary sewer pipes are designed to carry sewage, not groundwater and rain water.

Usually, the sanitary sewer pipe in the street is only 8 inches in diameter, and often the pipe slope is not very steep. Many 8 inch sewer pipes are installed with a minimum design slope of 0.4%. This means that for every 100 feet of pipe, the pipe goes downhill less than 5 inches. This slope condition is very common in sewer collection systems throughout the United States. As you can imagine, there is only so much sewage water that can flow through this pipe



For this type of sewer pipe, about 300 gallons of water can flow through it in a minute. If more sewage than this tries to get through that pipe in the street, the sewage will surcharge. The sewer main will back up into the sewer lateral pipes that run to the sewer main from houses. When even more sewage or extra water is sent to the sewer pipe, it will surcharge even more, eventually pushing back into someone's basement. The sewage might come out of a neighbor's basement toilet or washing machine drain for example. If hooked up to a house's sewer lateral, a half-horsepower sump pump will pump about 60 gallons to the sewer each minute. Since the sewer main will often flow more than half-full already, two or three homes illegally connected sump pumps could exceed the sewer main's capacity and sewage in the pipe will back up! The result can be a nasty mess for you and your neighbors.

In addition to potentially causing sewage to backup into your home or into your neighbor's home, you could see an addition charge on your quarterly sewer bill. The Township has established a Sewer Surcharge of 25% to be added to quarterly sewer rental fees for illegal connections. If the sump pump is not properly disconnected within 12 months, the surcharge will be increased to 50%.

We Recycle

ACCEPTABLE ITEMS TO RECYCLE

METAL:

- Aluminum beverage cans
- Steel food and beverage cans & aerosol cans

GLASS:

- Clear, brown & green glass food and beverage containers

PLASTICS:

- #1 - #7 containers & bottles with necks smaller than their bases

PAPER, PAPERBOARD, & CARDBOARD:

- All sizes of cardboard boxes
- Pizza boxes
- Food boxes (i.e. cereal & Jello boxes)
- EMPTY paper towel & toilet paper rolls
- Paperboard packaging (i.e. tissue boxes)
- Office paper (any color)
- Shredded paper (in clear plastic bags please)
- Newspapers & inserts
- Magazines, catalogs & brochures
- Envelopes & junk mail
- Paper bags
- Phone books & other soft cover books



HOW TO PREPARE RECYCLABLES

METAL CANS, GLASS & PLASTICS

- Remove caps/lids
- Rinse thoroughly
- It is okay to leave on labels & neck rings

PAPER, PAPERBOARD & CARDBOARD

- Remove all packaging (Styrofoam, peanuts, plastic, bubble wrap, plastic liners, etc.)
- Flatten ALL boxes/cardboard
- Bundle all cardboard that does not fit into the recycling bin
- Cover loose paper with heavier containers to prevent it from blowing away
- Check weather forecast: If the forecast calls for high winds or rain, keep your recyclables inside until the following week if possible. Wet paper products are difficult to process.

UNACCEPTABLE ITEMS TO RECYCLE

- | | | |
|---|---|--|
| • NEEDLES (do not place used needles with recycling! This is a serious health hazard to everyone) | • Aluminum foil | • All solvent, oil & chemical containers |
| • Plastic tubs, cups & trays | • Scrap metal | • Food soiled material |
| • Broken glass | • Tupperware or disposable plastic containers | • Paperboard juice & milk containers |
| • Windows, mirrors, ceramics | • Plastic tableware (knives, forks, etc) | • Soaked and/or wet papers or cardboard |
| • Drinking glasses | • Plastic grocery bags | • Plastic food wrappers |
| | • Light bulbs | • Used paper towels or tissues |

www.dovertownship.org

DOVER TOWNSHIP

York County, Pennsylvania

Address: 2480 West Canal Road • Dover, PA 17315

Phone: (717) 292-3634 • **Fax:** (717) 292-1136 • **E-mail:** dovertwp@dovertownship.org

Municipal Office Hours: 8:00am to 4:30pm except Holidays

DOVER TOWNSHIP BOARD OF SUPERVISORS

Madelyn Shermeyer-Chairperson-Administration, Fire, ICDC

Monica J. Love-Vice Chairperson-Water, MS4 stormwater

Michael G. Husson- Asst Secretary-Sewer & Wastewater, Ambulance Club

Matthew D. Menges-Supervisor- Police

Charles S. Richards- Supervisor-Highways, Recreation & Parks

York County, Pennsylvania

THANK YOU

The Dover Township would like to thank the businesses that appear in this newsletter and to recognize them each as supporters and cornerstones of our community. For it is with their contributions that this newsletter has been produced at no charge to our residents.

Proudly supporting our community.



**BROOKSIDE
MOTORS**
DOVER, PA

3885 Carlisle Road
Dover, PA 17315-4417
717-292-9222
www.brooksidemotors.com

\$300 off
Entire Inventory

Must ask for Brad Rodgers
in order for coupon to be valid.
This offer excludes clearance vehicles
coupon expires 8/31/12



Brad Rodgers
"Your Automotive
Good Guys"

High quality late-model cars,
trucks, minivans & SUVs



**DOVER AREA
ANIMAL
HOSPITAL**

Daniel A. Pike D.V.M.

David W. Pike D.V.M.

Richard D. Greenwalt D.V.M.

Michael R. Burrell D.V.M.

Carrie A. Vigeant D.V.M.

Daniel P. Laucks V.M.D.

Donald C. Sunday D.V.M.

Amy A. Gerhardt D.V.M.



- Small Animals & Farm Animals
- Multi-Pet Discount
- Boarding & Grooming Facility
- Family Owned and Operated

717.292.9669

**5030 Carlisle Road
Dover, PA 17315**

(1 mile North of Dover Square on Rt. 74)



www.doveranimalhospital.com

Sam's Painting & Drywall, LLC

PA019981



Commercial & Residential
Interior & Exterior
Painting • Light Carpentry
Staining • Power Washing
Snow Removal/Junk Removal

Call Sam . . . He's the handy man!

Office 717-308-0373

Cell 717-577-6572

email samuelkearse@yahoo.com

Dover Antique Mall Etc. "Not Just Antiques"

Hours: Thursday through Sunday 10a.m to 5pm

5010 Carlisle Road
Dover, Pennsylvania 17315

(717) 292-2629

Doverantiquemall@gmail.com

An Auto Repair Shop YOU CAN TRUST

Full Service Repair Center

- Scheduled Maintenance and Repairs
- Computer Diagnostics and Engine Work
- A/C, Brake and Transmission Service
- Tune-ups and General Repairs



Authorized Repair Center

YOUR DEALERSHIP ALTERNATIVE
You never have to go back to the
dealership for maintenance and repairs
We can keep your warranty valid
(except recalls & warranty repairs)



"Get straight at KARS"
Now Providing Full Alignment Services



Family Owned & Operated

**1985 Carlisle Road
Shiloh • 764-7770**

24/7 Early bird drop-off box
Open Mon-Fri 8am-6pm

You Have Just Found an Auto Repair Shop You Can Trust.

We are a family owned business, offering friendly,
high quality service and repairs.

- Quality - ASE Certified Technicians
- Honesty - We only perform necessary work
- No Surprises - All work approved by you

Experience our exceptional customer service
by calling for an appointment today!

GET ACQUAINTED SPECIAL

- 3000 Mile Oil & Filter Service (oil to 5 qt., some fees extra)
- Multi-Point Vehicle Safety and Maintenance Inspection
- Tire Rotation (As Needed)
- Complete Brake Inspection
- Check Anti-Freeze & All Fluids
- Inspect Belts & Hoses
- Test Battery & Charging System
- Consultation on Any Problems with Your Vehicle

\$39.95
An \$66.95 Value



YOUR CHOICE

\$10 OFF **\$15 OFF** **\$20 OFF**
Any Service Over \$100 Any Service Over \$150 Any Service Over \$200

KARS 764-7770

NOT VALID WITH ANY OTHER OFFERS OR PRIOR SERVICES

DOVER TOWNSHIP

2480 West Canal Road
Dover, PA 17315

PRSRT STD
ECRWSS
U.S. POSTAGE
PAID
PERMIT NO. 609



This Community Newsletter is produced for the
Dover Township by **Hometown Press**
215.257.1500 • All rights reserved®


To Place An Ad Call Sara Pifer at Hometown Press • 717-395-1634

GraphicID

Logos • Branding • Signs

Specializing in Dimensional Graphics

717-308-0059

www.graphicidstudios.com 

🐾 Miss Lucy's Dog Treats 🐾



Located at 5241 N. Salem Church Road in Dover
Has all the Special Treats for your
Four Legged Friend this Christmas Season

Come visit us at:

Miss Lucy's Dog Treats and Friends

Located at The York Galleria Mall
during 12/1-12/30

717-292-6593

Paying too much? for auto insurance



Covenant Insurance

3361 W Canal Road, Dover, PA 17315

292-2028

covenantcares.com • robs@covenantcares.com



© 2011. THE AB COMPANY AND COMPANY OF BOWEN IN MIAMI, FL. ALL PRODUCTS ARE OFFERED BY AB. SEE WWW.ABINSURANCE.COM FOR COMPANY INFORMATION AND BOWEN INFORMATION.